

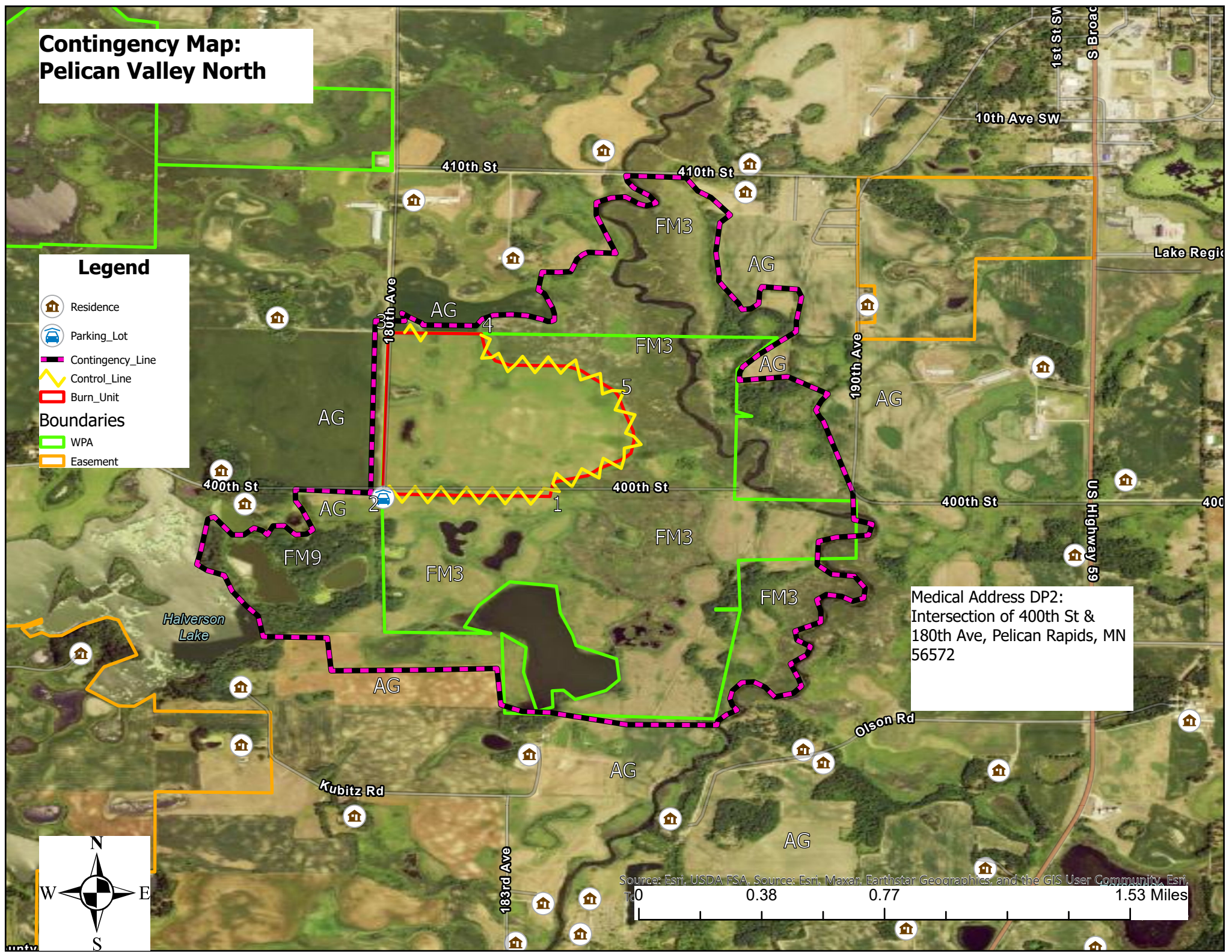
# Contingency Map: Pelican Valley North

**Legend**

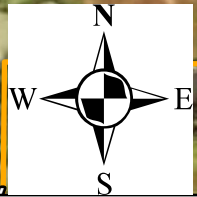
- Residence
- Parking\_Lot
- Contingency\_Line
- Control\_Line
- Burn\_Unit

**Boundaries**

- WPA
- Easement



Medical Address DP2:  
Intersection of 400th St &  
180th Ave, Pelican Rapids, MN  
56572



Source: Esri, USDA FSA, Source: Esri, Maxar, Earthstar Geographics, and the GIS User Community, Esri, Inc.  
0 0.38 0.77 1.53 Miles