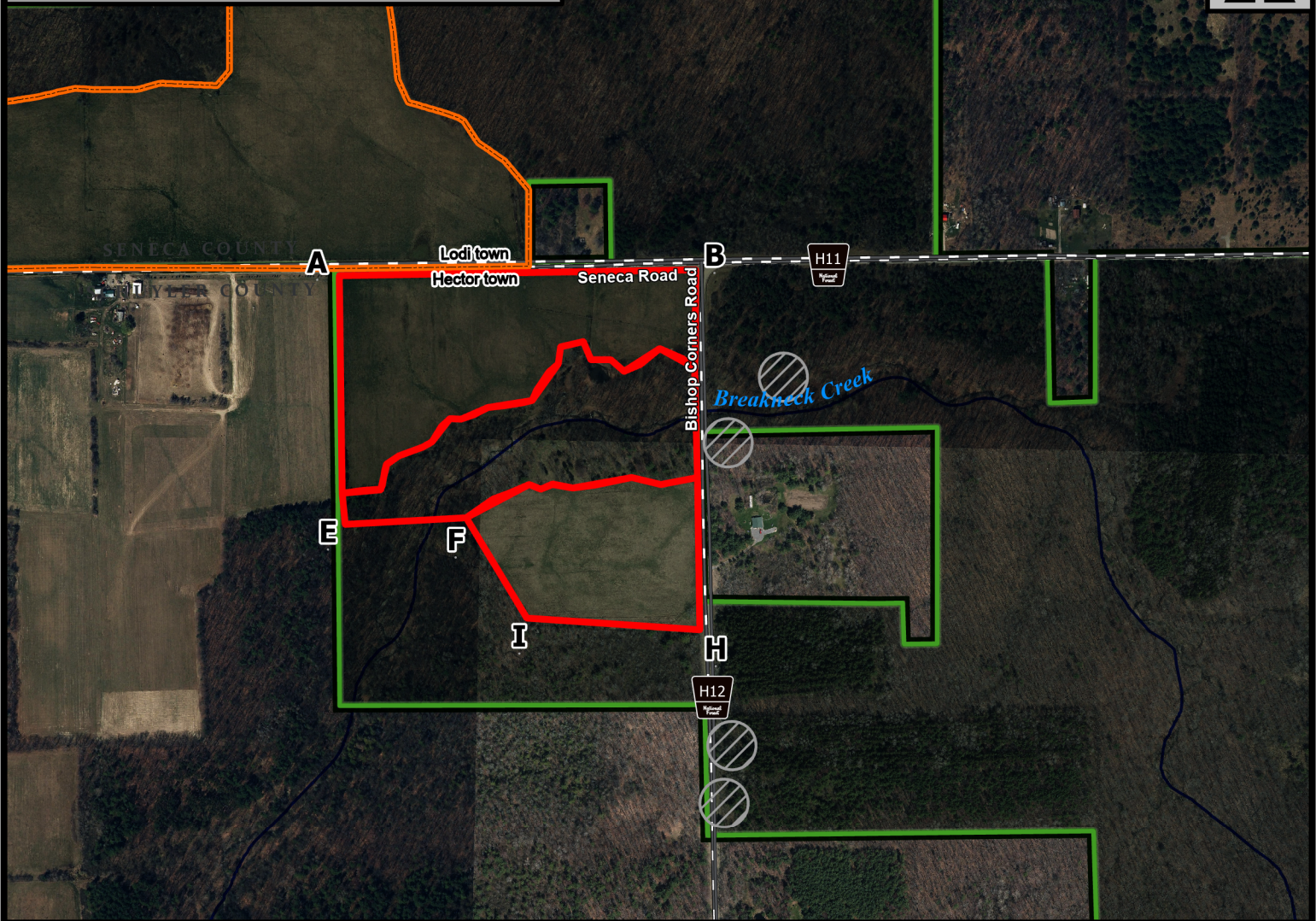
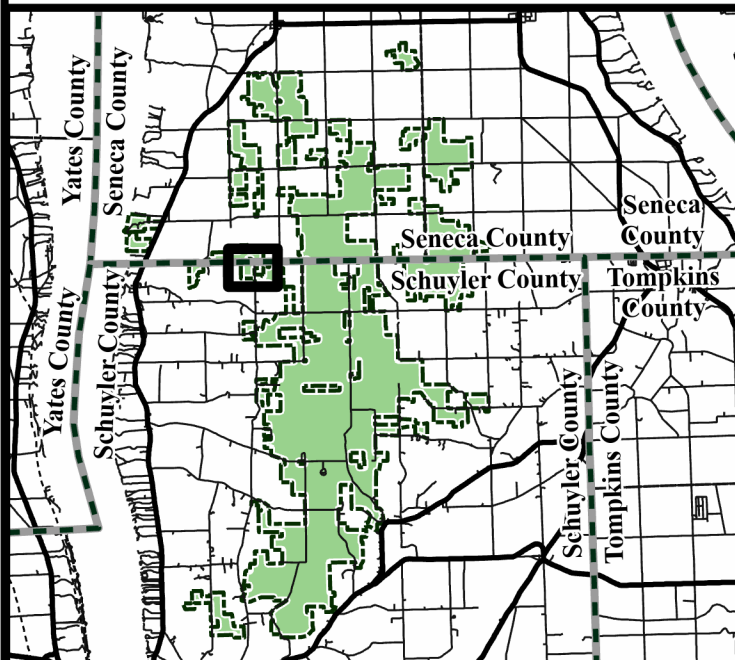


South Stevens Pasture

0 0.2 0.4
Miles



Vicinity Map



Green Mountain National Forest

- Fire Exclusion Area
- Current Year Burn Unit
- Outyear Burn Unit
- National Forest

Hector Ranger District

Town of Hector

Schuyler County

42.54°N -76.83°W

Elevation 1,270 Feet

Complexity: Moderate

Current Year Planned Acres: 41

OnSite Fuel Model:
GR1

South Stevens 1	28
South Stevens 2	13

Best Access: bishop corner road and seneca road

Intel Features: Roads N and E, creek crossing in middle of unit or on Bishop Corners Rd