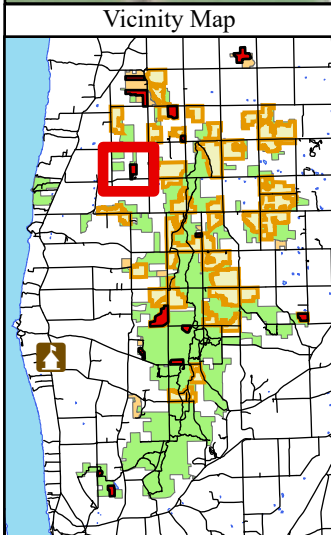


New York State, Maxar, Esri Community Maps Contributors, © OpenStreetMap, Microsoft, Esri, TomTom, Garmin, SafeGraph, GeoTechnologies, Inc, METI/NASA, USGS, EPA, NPS, US Census Bureau, USDA, USFWS



Legend

- FY24_RX_Burn_Units
- Green Mountain and Finger Lakes National Forests
- FLNF Proclaimed Forest Boundary (EDW)
- Private Property

N

FY24 Burn units
Unit: Ahouse 137
Subunit:
Comp: 78 St: 104 Acres: 33

Finger Lakes National Forest
Town of Lodi, Seneca County
42.557006, -76.89110

Access:
0.5 miles west of intersection of
County Route 137 and Lodi Center Rd
Parking: County Route 137

0 0.03 0.06 0.12 0.18 0.24 Miles

The USDA Forest Service makes no warranty, expressed or implied regarding the data on this map, and reserves the right to correct, update, modify, or replace this information without notification.