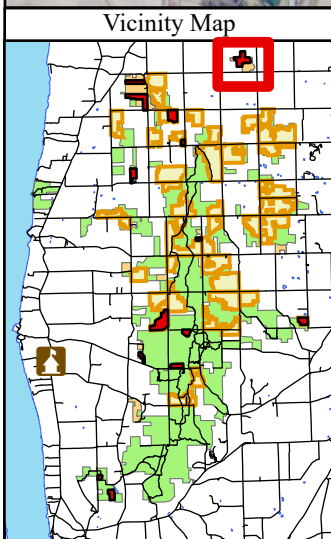


New York State, Maxar, Esri Community Maps Contributors, © OpenStreetMap, Microsoft, Esri, TomTom, Garmin, SafeGraph, GeoTechnologies, Inc, METI/NASA, USGS, EPA, NPS, US Census Bureau, USDA, USFWS



Legend

- FY24_RX_Burn_Units
- Green Mountain and Finger Lakes National Forests
- Perennial Stream
- FLNF Proclaimed Forest Boundary (EDW)
- Private Property

UTV Access

UTV Access

N

FY24 Burn units
Unit: Amen North
Subunit: Alpha
Comp: 148 St: 1 Acres: 64

Finger Lakes National Forest
Town of Lodi, Seneca County
42.605186, -76.769055

Access:
0.2 miles west of intersection of
Darling Rd and Lodi Covert Townline
Rd
Parking: Darling Rd

0 0.04 0.08 0.16 0.24 0.32 Miles

The USDA Forest Service makes no warranty, expressed or implied regarding the data on this map, and reserves the right to correct, update, modify, or replace this information without notification.