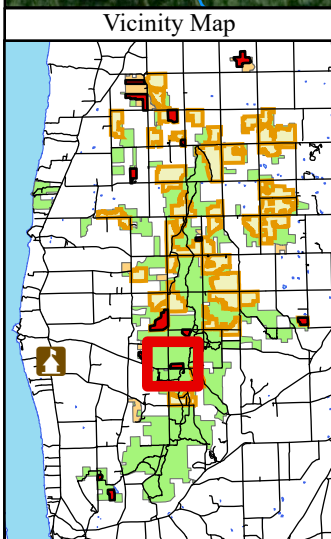


Esri Community Maps Contributors, data.pa.gov, © OpenStreetMap, Microsoft, Esri, TomTom, Garmin, SafeGraph, GeoTechnologies, Inc, METI/NASA, USGS, EPA, NPS, US Census Bureau, USDA, USFWS, New York State, Maxar



Legend

Trailhead	Green Mountain and Finger Lakes National Forests
Fishing Site	Perennial Stream
Existing Fence	FLNF Proclaimed Forest Boundary (EDW)
FY24_RX_Burn_Units	Private Property

N

FY24 Burn units
Unit: Foster Shrubland
Subunit:
Comp: 34 St: 103 Acres: 21

Finger Lakes National Forest
Town of Hector, Schuylar County
42.498153, -76.797075

Access:
0.3 miles west of Potomac Rd on Backbone Trail
Parking: Foster Pond Trail Head

0 0.03 0.07 0.13 0.2 0.26 Miles

The USDA Forest Service makes no warranty, expressed or implied regarding the data on this map, and reserves the right to correct, update, modify, or replace this information without notification.