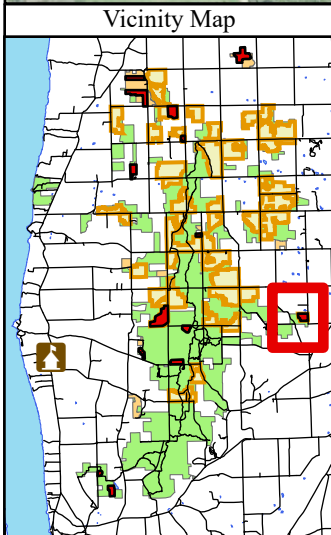


New York State, Maxar, Esri Community Maps Contributors, ©
 OpenStreetMap, Microsoft, Esri, TomTom, Garmin, SafeGraph,
 GeoTechnologies, Inc, METI/NASA, USGS, EPA, NPS, US Census Bureau,
 USDA, USFWS



Legend

<p>Fences</p> <p>STATUS</p> <ul style="list-style-type: none"> - - - Existing Fence FY24_RX_Burn_Units Green Mountain and Finger Lakes National Forests 	<p>Flowing Water</p> <ul style="list-style-type: none"> — Perennial Stream FLNF Proclaimed Forest Boundary (EDW) Private Property
---	--

N

FY24 Burn units
 Unit: Robinson Pasture
 Subunit:
 Comp: 27 St: 227 Acres: 29

Finger Lakes National Forest
 Town of Hector, Schuyler County
 42.505071, -76.734447

Access:
 0.75 miles South of intersection of
 Bower Rd and Burr Rd
 Parking: Burr Rd

0 0.03 0.06 0.12 0.18 0.24 Miles

The USDA Forest Service makes no warranty, expressed or implied regarding the data on this map, and reserves the right to correct, update, modify, or replace this information without notification.