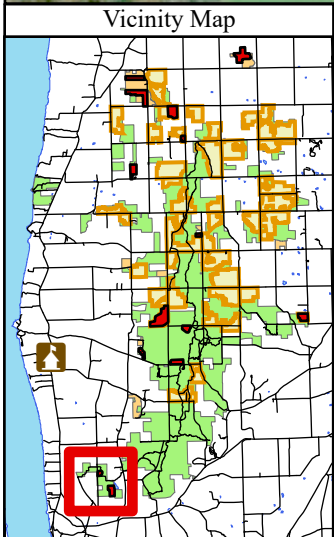








Esri Community Maps Contributors, data.pa.gov, © OpenStreetMap, Microsoft, Esri, TomTom, Garmin, SafeGraph, GeoTechnologies, Inc, METI/NASA, USGS, EPA, NPS, US Census Bureau, USDA, USFWS, New York State, Maxar



Legend

Recreation Site

-  Trailhead
-  FY24_RX_Burn_Units
-  Green Mountain and Finger Lakes National Forests
-  FLNF Proclaimed Forest Boundary (EDW)
-  Private Property




N

FY24 Burn units
Unit: Satterly Hill
Subunit: Foxtrot, Golf, Hotel
Comp: 60 St: 103 Acres: 10

Finger Lakes National Forest
Town of Hector, Schuylar County
42.440460, -76.844344

Access:
Satterly Hill Rd
Parking: Satterly Hill Rd

0 0.03 0.05 0.1 0.15 0.2
Miles



The USDA Forest Service makes no warranty, expressed or implied regarding the data on this map, and reserves the right to correct, update, modify, or replace this information without notification.