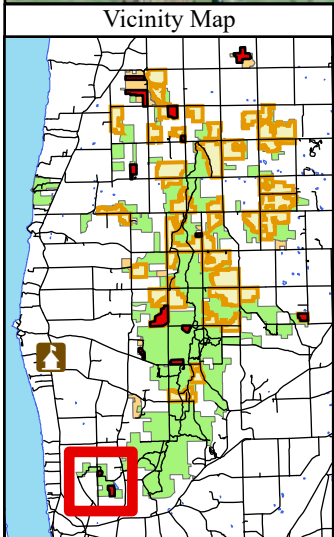








Esri Community Maps Contributors, data.pa.gov, © OpenStreetMap, Microsoft, Esri, TomTom, Garmin, SafeGraph, GeoTechnologies, Inc, METI/NASA, USGS, EPA, NPS, US Census Bureau, USDA, USFWS, New York State, Maxar



Vicinity Map

Legend

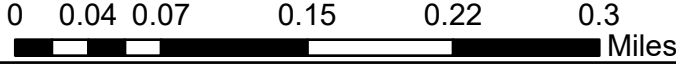
-  FY24_RX_Burn_Units
-  Green Mountain and Finger Lakes National Forests
- Flowing Water**
-  Perennial Stream
-  Other
-  FLNF Proclaimed Forest Boundary (EDW)
-  Private Property



FY24 Burn units
 Unit: Satterly Hill
 Subunit: Mike, Oscar
 Comp: 70 St: 201 Acres: 27

Finger Lakes National Forest
 Town of Hector, Schuyler County
 42.435994, -76.836698

Access:
 Satterly Hill Rd
 Parking: Satterly Hill Rd



The USDA Forest Service makes no warranty, expressed or implied regarding the data on this map, and reserves the right to correct, update, modify, or replace this information without notification.