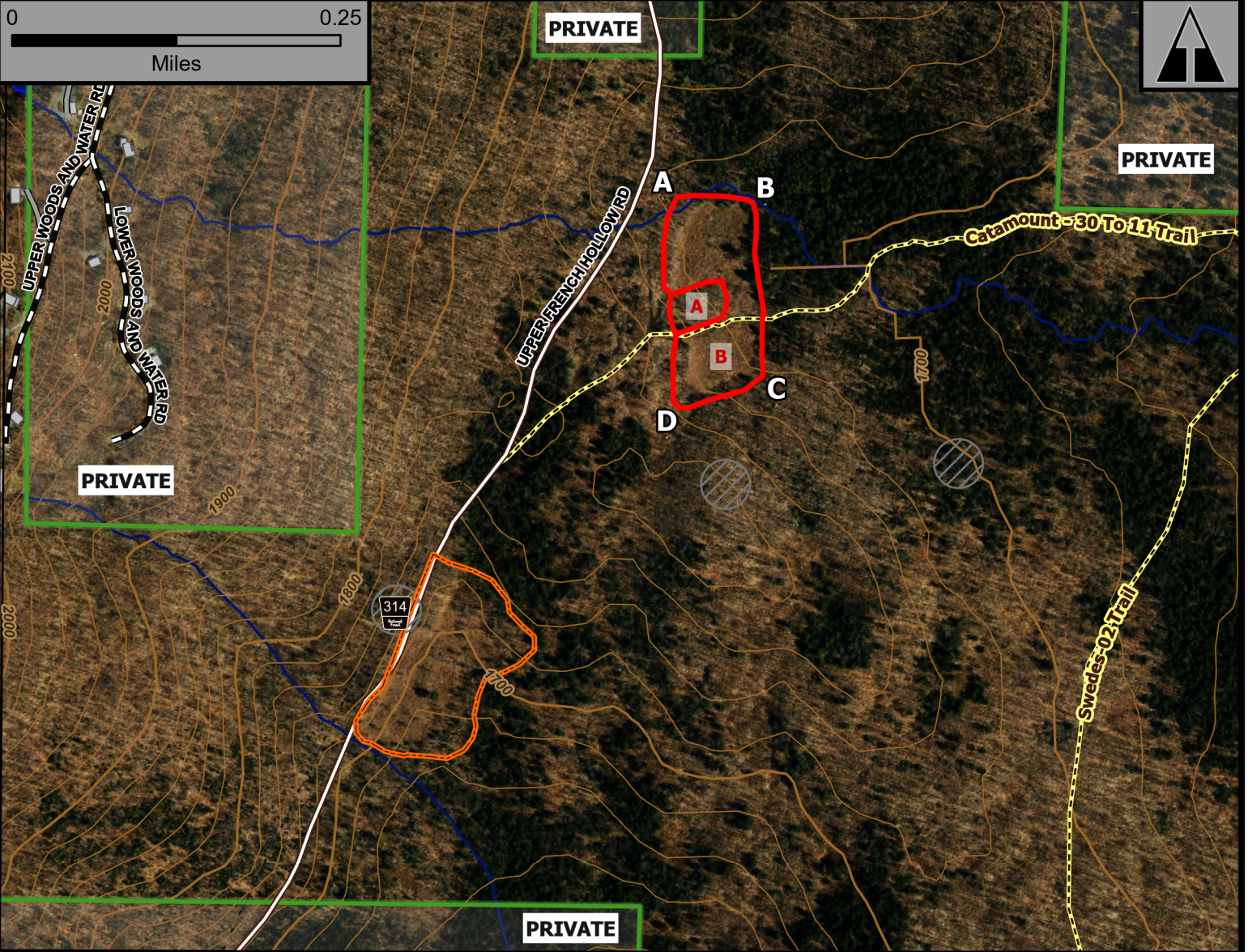


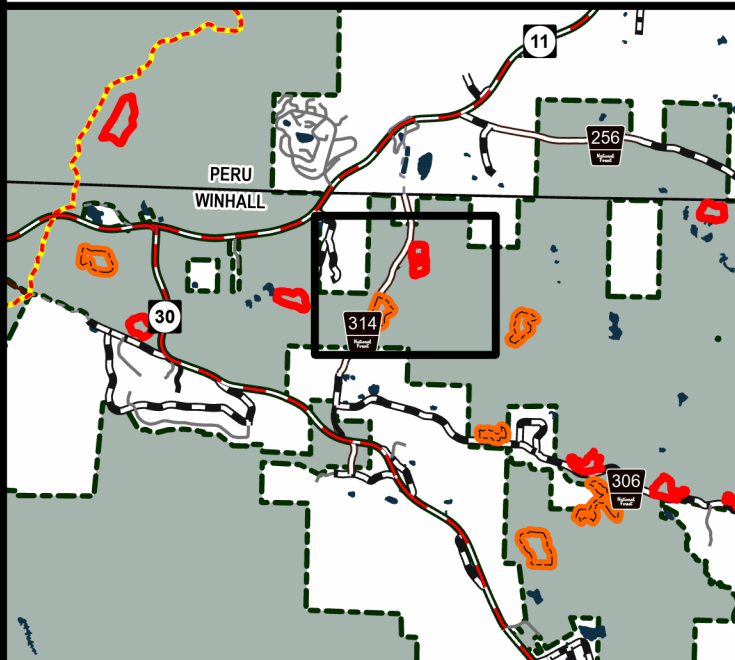
# Cone Brook West AB



Geo Group: Bromley



Green Mountain National Forest



- Forest Trails
- Fire Exclusion Area
- 2025 Planned RXUnit
- Outyear Unit
- Buildings
- National Forest

**Manchester Ranger District**

**Town of Winhall**

**Bennington County**

**43.202°N -72.933°W**

**Elevation 1,700 Feet**

Complexity: Moderate

**Current Year Planned Acres: 7**

OnSite Fuel Model:  
GR2

Cone Brook West A 1

Cone Brook West B 6

Best Access: VT Rte 30 > French Hollow Rd > Upper French Hollow Rd  
> Catamount Trail

Intel Features: Primary repeater: Equinox. Catamount Trail, Cellarhole.  
Apple trees.