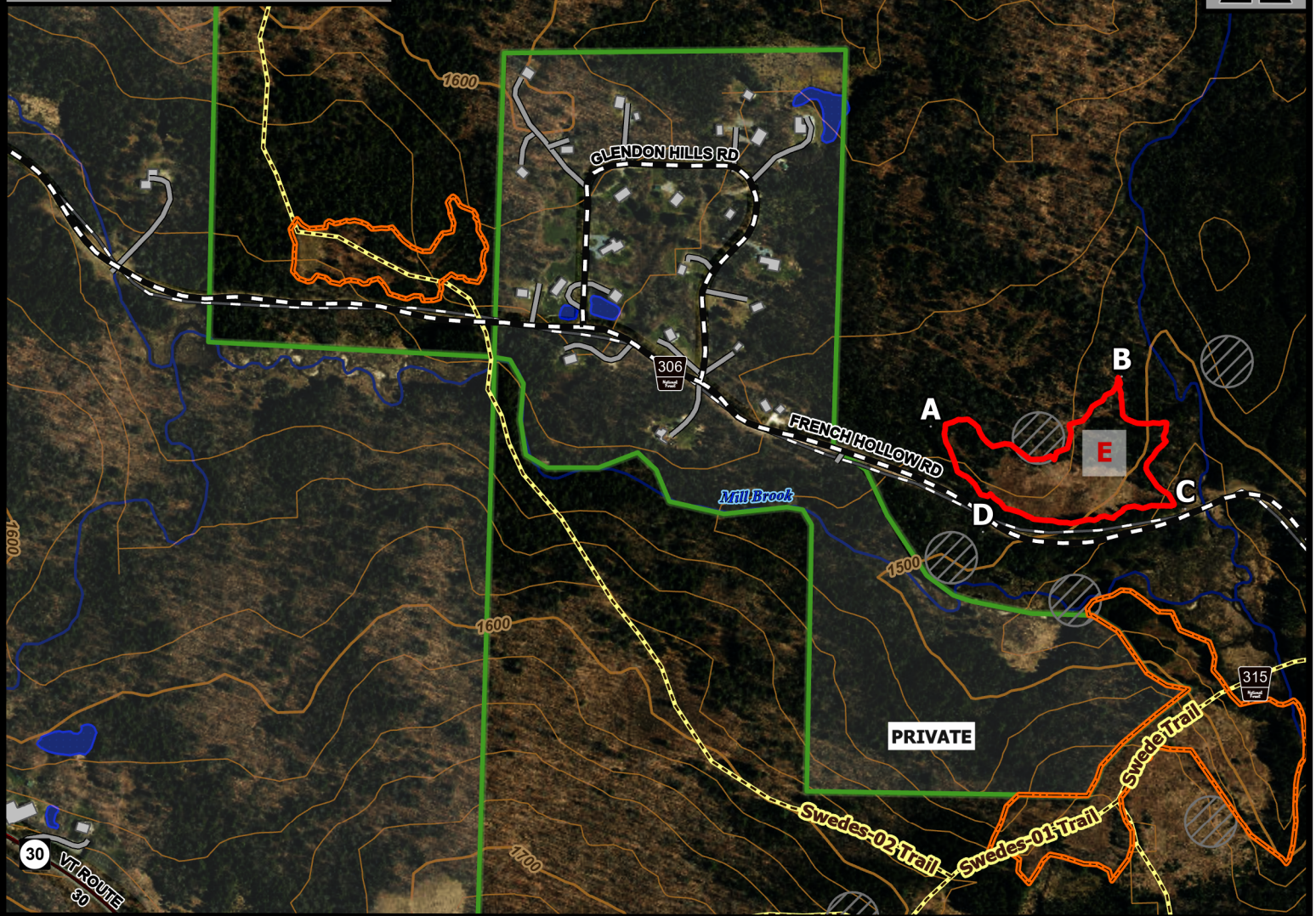
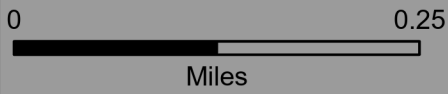


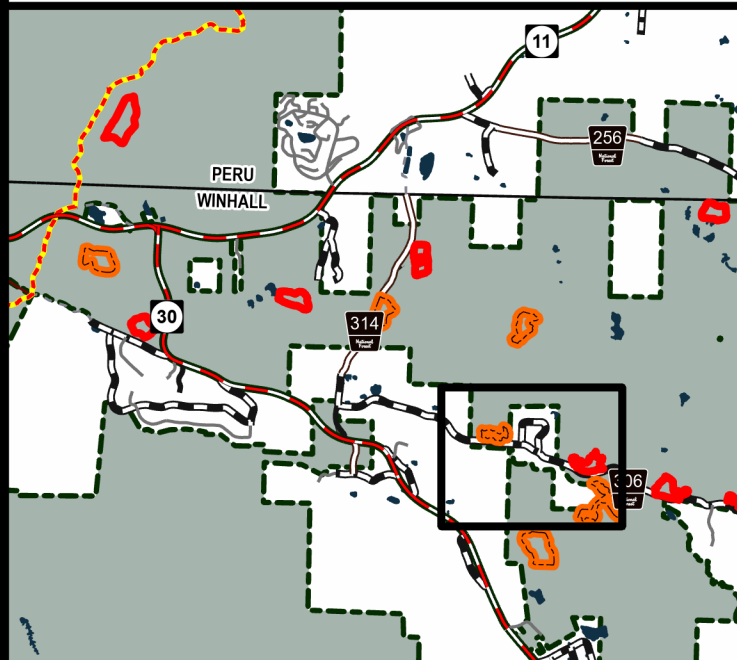
Cone Brook West E



Geo Group: Bromley



Green Mountain National Forest



- Forest Trails
- Fire Exclusion Area
- 2025 Planned RX Unit
- Outyear Unit
- Buildings
- National Forest

Manchester Ranger District

Town of Winhall

Bennington County

43.187°N -72.916°W

Elevation 1,620 Feet

Complexity: Moderate

Current Year Planned Acres: 5

OnSite Fuel Model:
SH3

Cone Brook West E 5

Best Access: VT Rte 30 > French Hollow Rd

Intel Features: Primary repeater: Equinox.