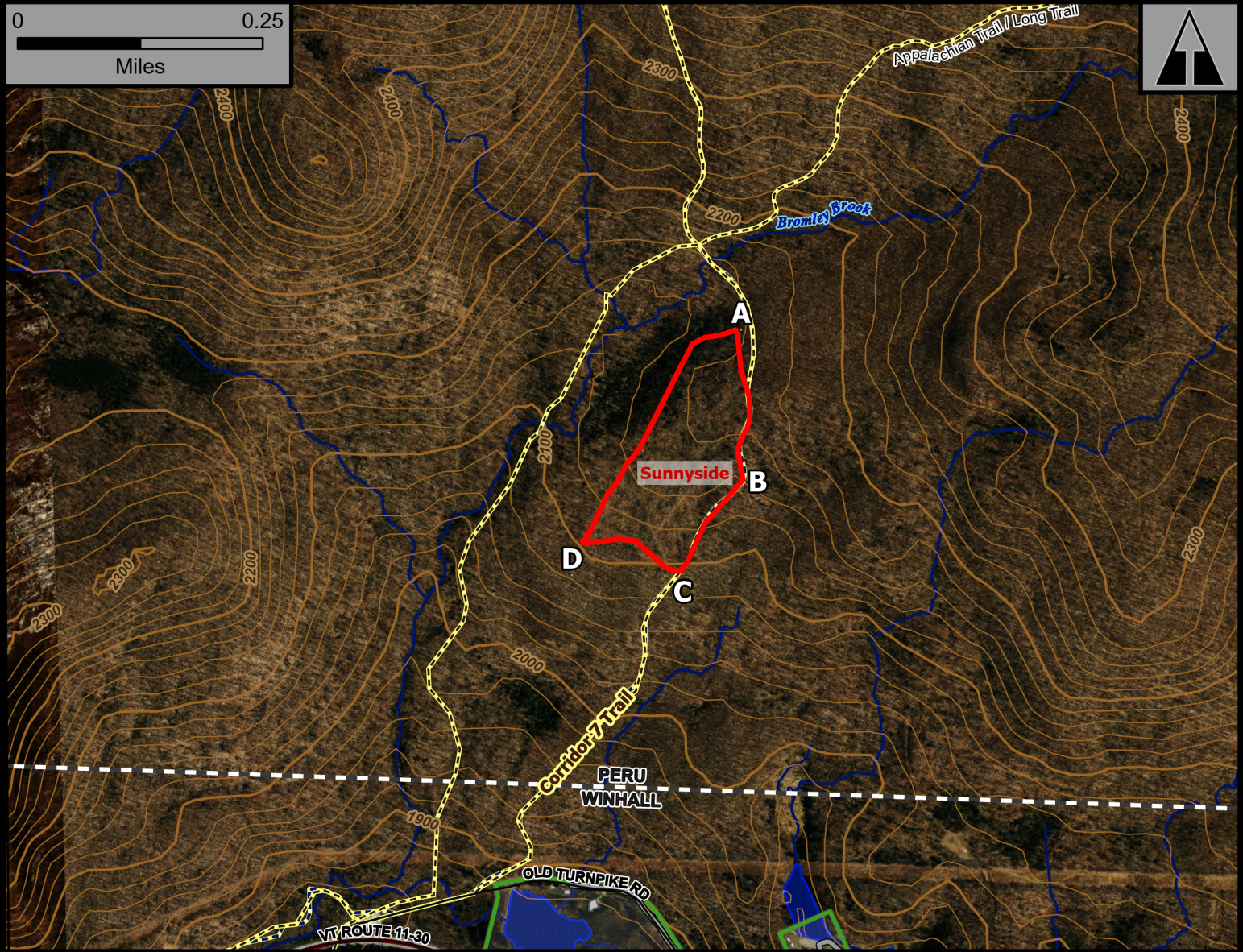


Sunnyside

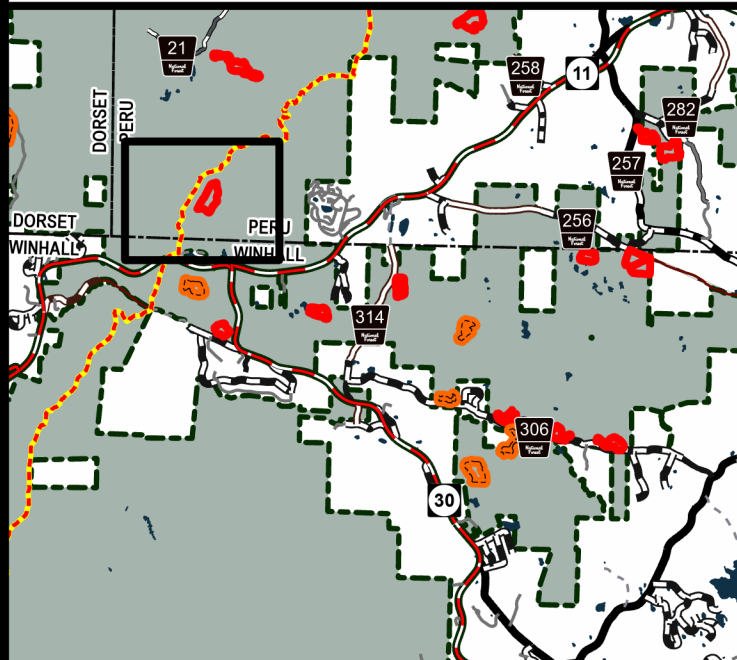
0 0.25
Miles



Geo Group: Sunnyside



Green Mountain National Forest



Manchester Ranger District

Town of Peru

Bennington County

43.214°N -72.964°W

Elevation 2,160 Feet

- Forest Trails
- 2025 Planned RXUnit
- Buildings
- National Forest

Complexity: Moderate

Current Year Planned Acres: 14

OnSite Fuel Model:
SB2

Sunnyside 14

Best Access: VT Rte 30/11 > AT/LT parking lot on north side of highway
> hike 7 corridor snowmobile trail

Intel Features: Primary repeater: Equinox. Mastication.