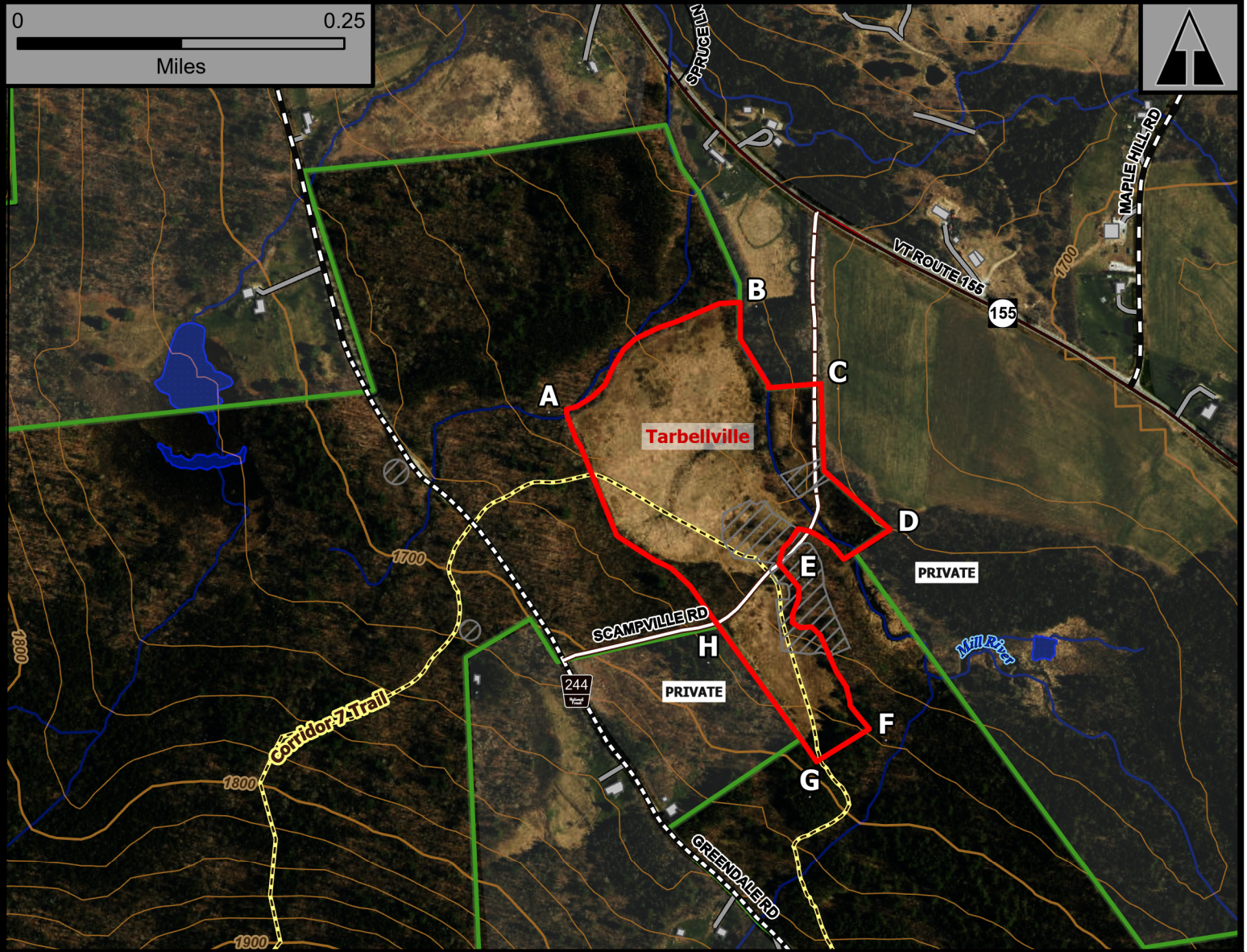
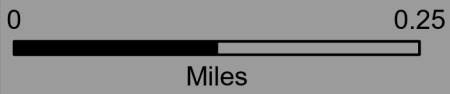


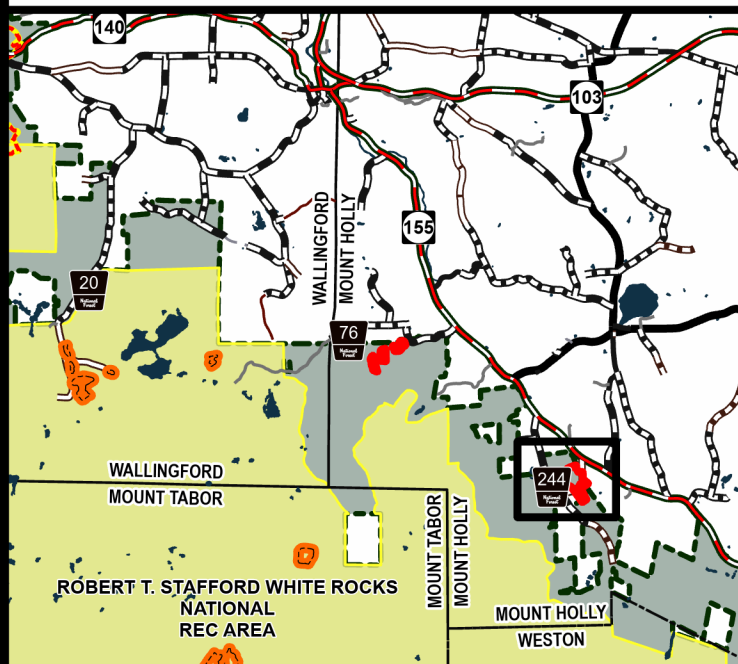
Tarbellville



Geo Group: Mount Holly



Green Mountain National Forest



- Forest Trails
- Fire Exclusion Area
- 2025 Planned RXUnit
- Buildings
- National Forest

Manchester Ranger District

Town of Mount Holly

Rutland County

43.394°N -72.829°W

Elevation 1,660 Feet

Complexity: Moderate

Current Year Planned Acres: 25

OnSite Fuel Model:
GR3

Tarbellville 25

Best Access: VT Rte 155, Greendale Rd, parking at gate

Intel Features: Primary Repeater - Killington. Corridor 7 Trail, Apples, Birdboxes. Caution around wet areas with UTV