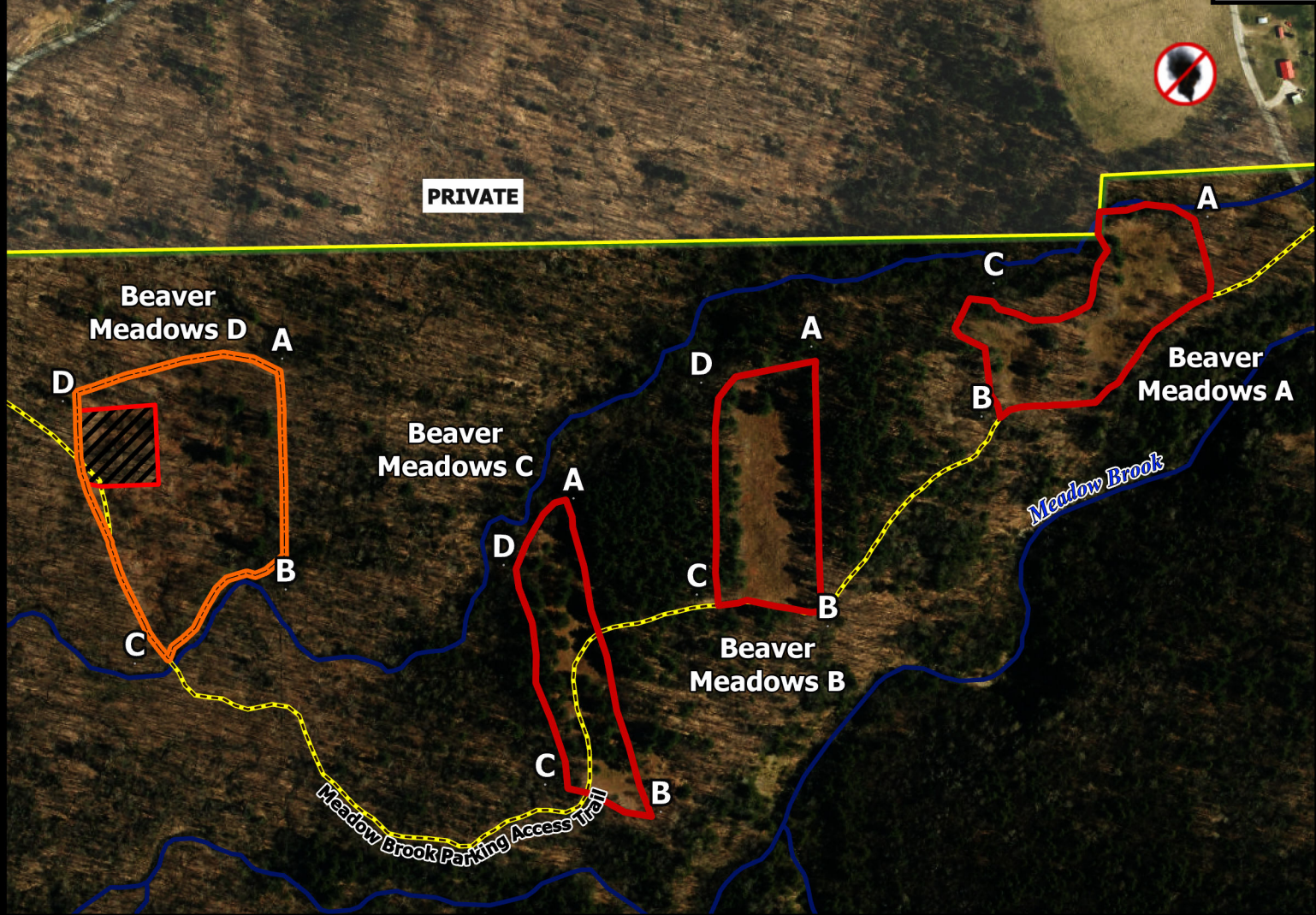
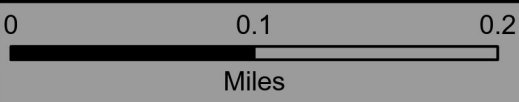


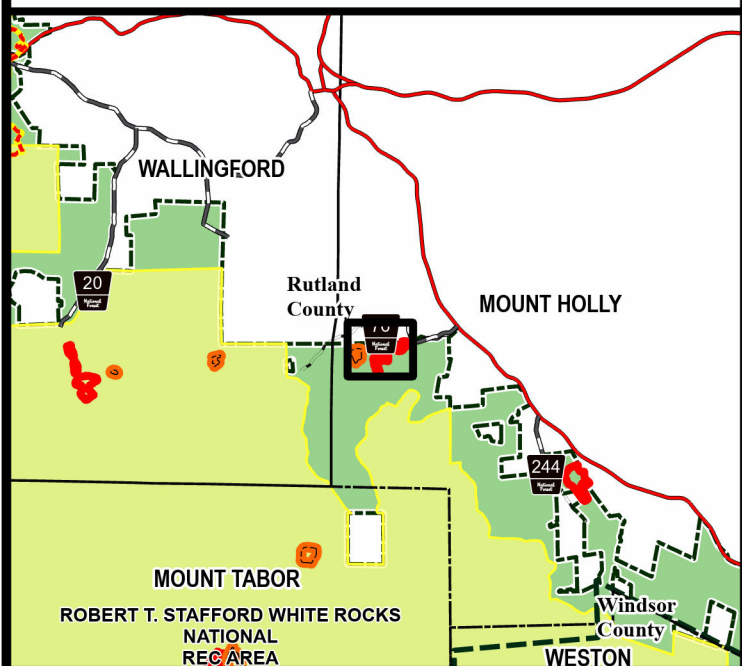
Beaver Meadows ABC



Geo Group: Mount Holly



Green Mountain National Forest



Manchester Ranger District
Town of Mount Holly
Rutland County
43.414°N -72.858°W
Elevation 1,600 Feet

- Sensitive Smoke Receptor
- AT/LT
- Out Year Unit
- 2024 Burn Unit
- Fire Exclusion Area
- Green Mountain NF

Complexity: Moderate

Current Year Planned Acres: 10

OnSite Fuel Model:
GS3

| | |
|------------------|---|
| Beaver Meadows A | 4 |
| Beaver Meadows B | 3 |
| Beaver Meadows C | 3 |

Best Access: VT Rte 155 > Beaver Meadow Rd > Snowmobile parking lot and trail

Intel Features: Primary Repeater - Killington. Bird boxes. Sensitive Smoke Receptor Adjacent Private Residence to North