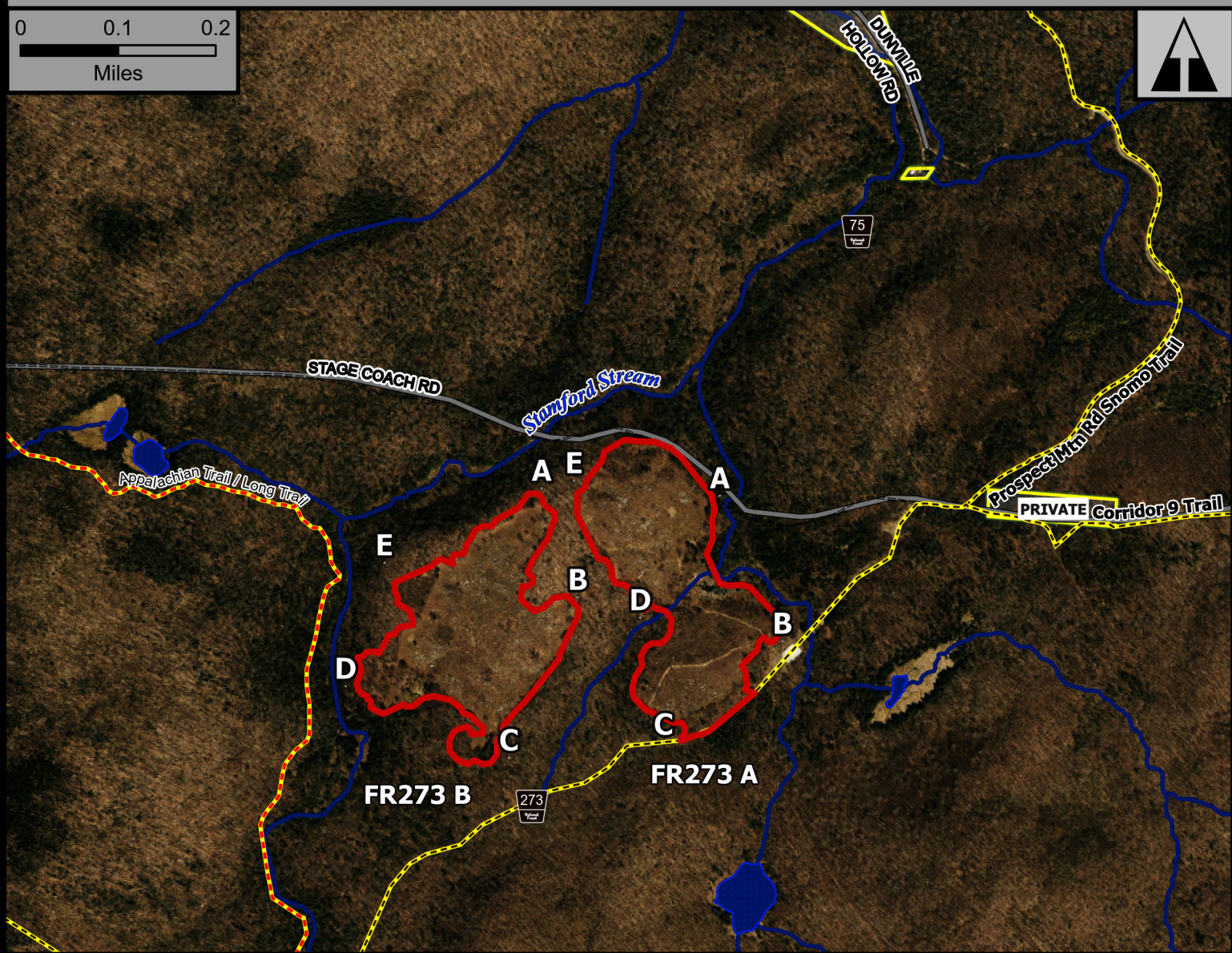
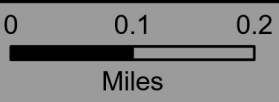


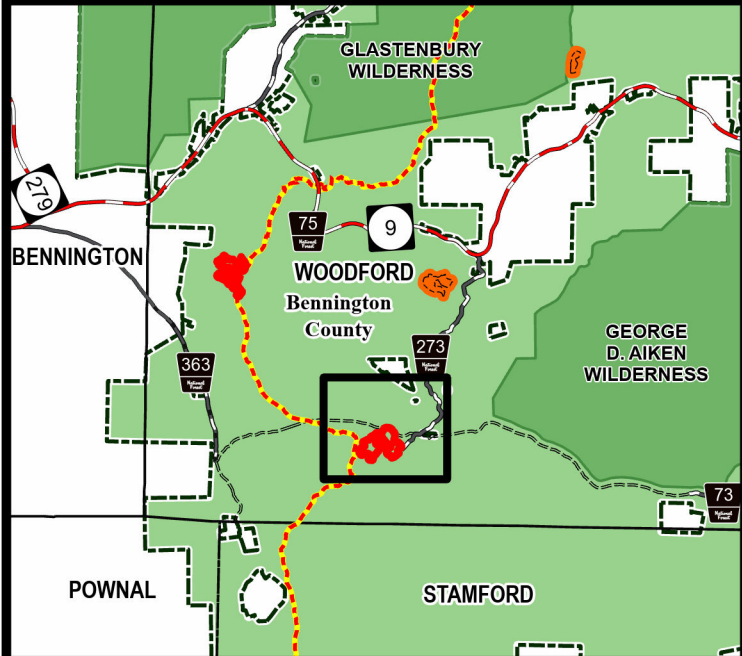
FR 273 A & B



Geo Group: Prospect



Green Mountain National Forest



- AT/LT
- 2024 Burn Unit
- Fire Exclusion Area
- Green Mountain NF

Manchester Ranger District
Town of Woodford
Bennington County
42.847°N -73.102°W
Elevation 2,040 Feet

Complexity: Low	Current Year Planned Acres: 41	
OnSite Fuel Model: SH1	FR 273 A	21
	FR 273 B	20

Best Access: VT Rte 9 > City Stream > FR273

Intel Features: Primary Repeater - Mount Snow or Equinox. Notify MA DEP if expecting smoke column