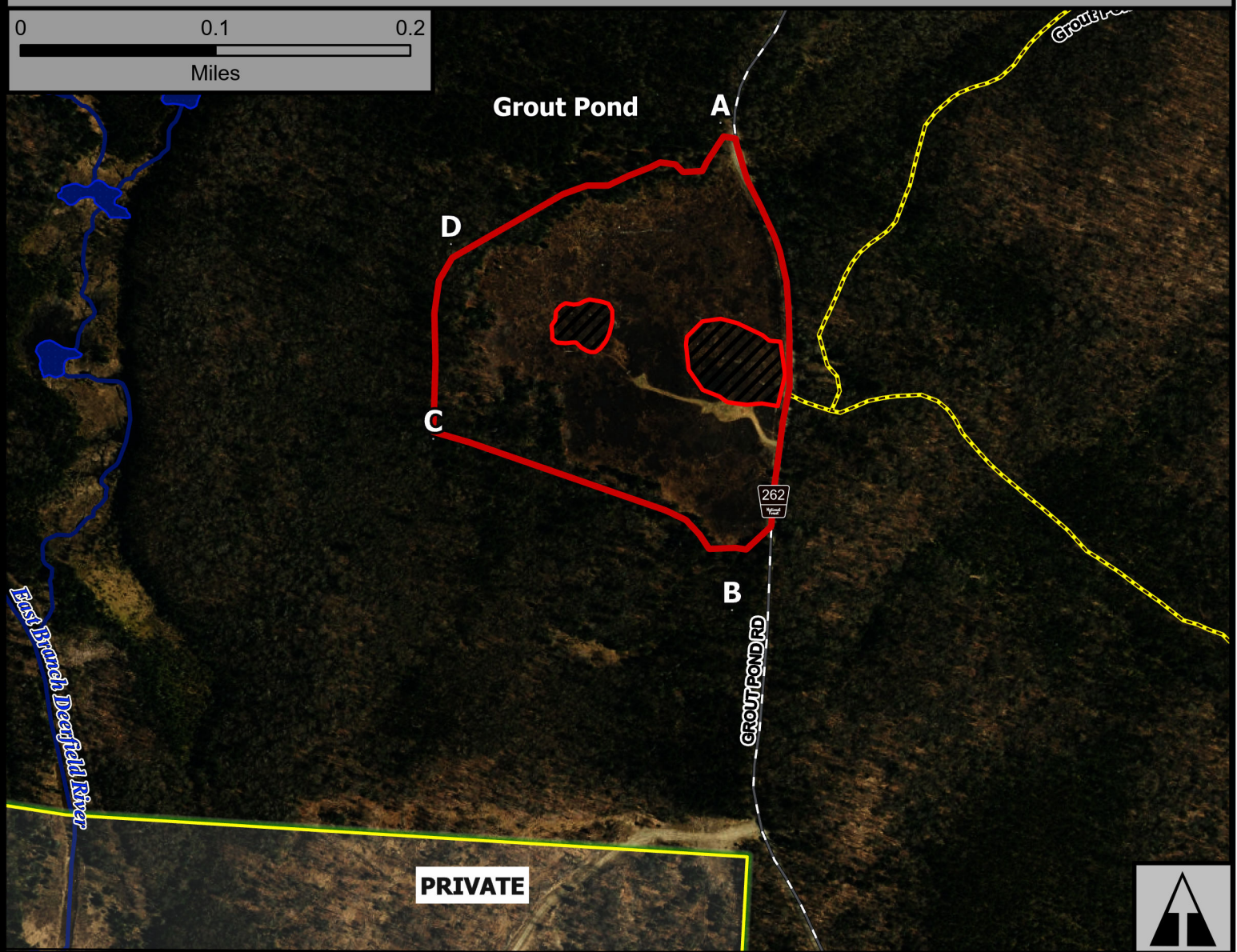
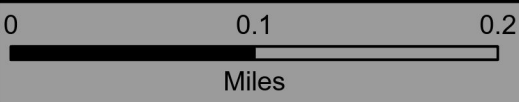


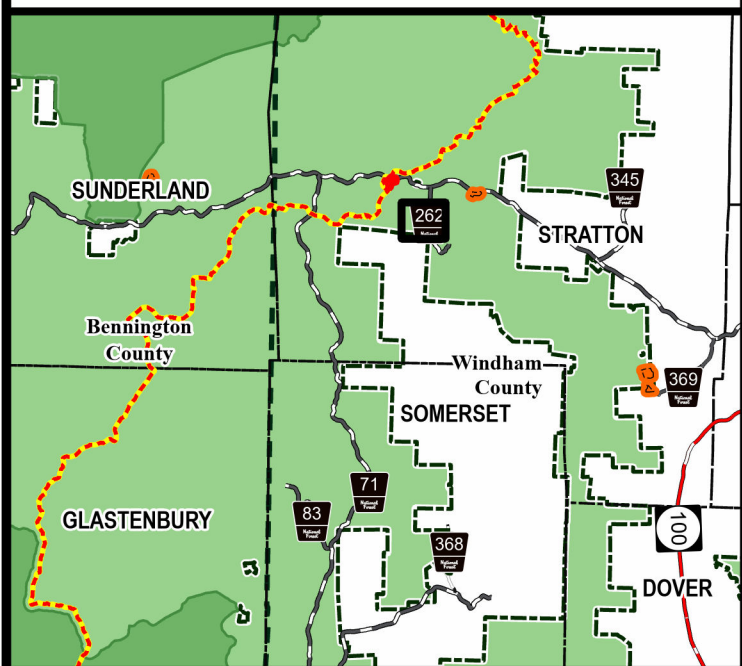
# Grout Pond



Geo Group: Kelley Stand Road



Green Mountain National Forest



Manchester Ranger District

Town of Stratton

Windham County

43.053°N -72.958°W

Elevation 2,310 Feet

Complexity: Moderate

Current Year Planned Acres: 17

OnSite Fuel Model:  
GS1

Grout Pond	17
------------	----

Best Access: VT Rte 30 > Stratton Mtn Rd > Mtn Rd > W.Jamaica Rd > Stratton-Arlington Rd > Kelley Stand Rd > Grout Pond Rd

Intel Features: Primary Repeater - Mount Snow. Interp sign, Apples