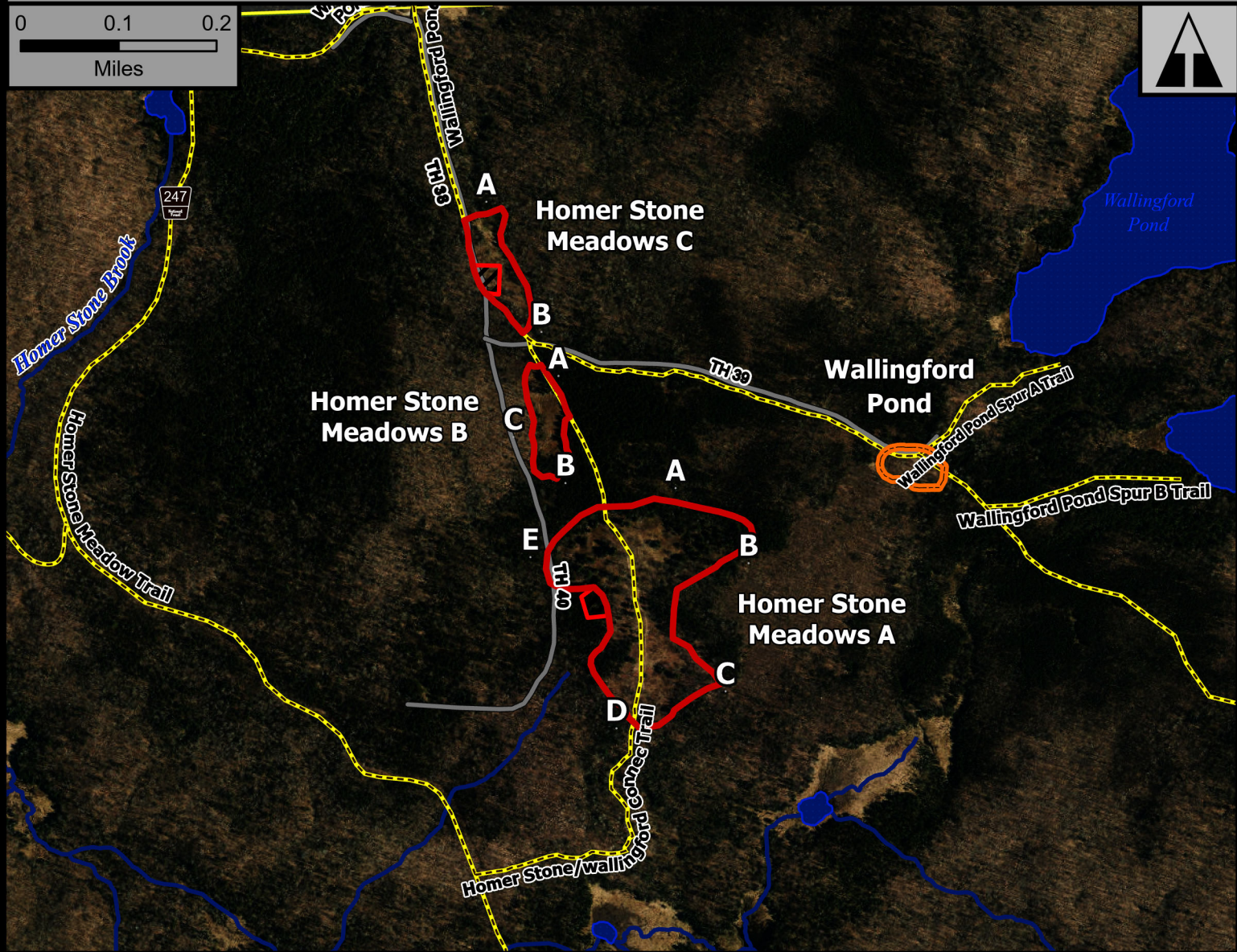
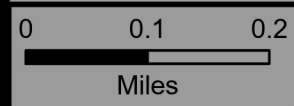


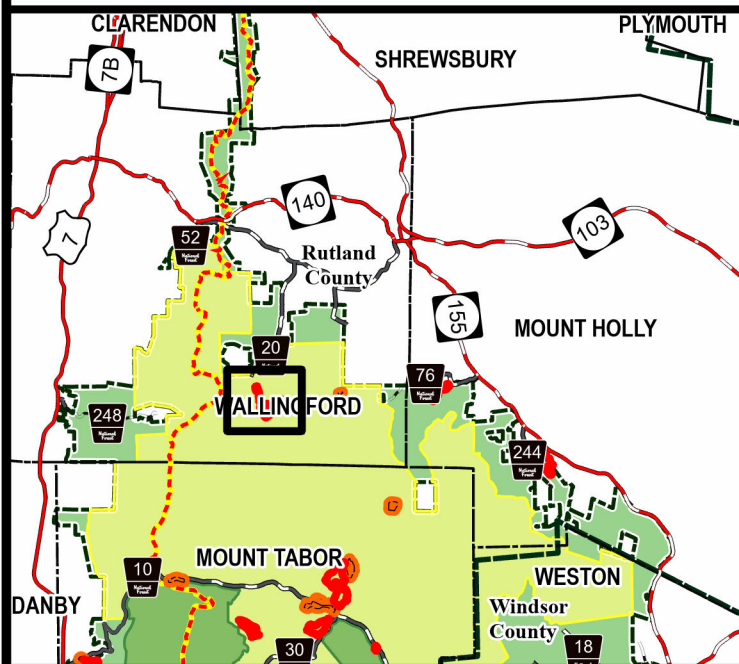
Homer Stone ABC



Geo Group: Wallingford



Green Mountain National Forest



Manchester Ranger District

Town of Wallingford

Rutland County

43.410°N -72.923°W

Elevation 2,290 Feet

- AT/LT
- Out Year Unit
- 2024 Burn Unit
- Fire Exclusion Area
- Green Mountain NF

Complexity: Low

Current Year Planned Acres: 22

OnSite Fuel Model:
GS3

Homer Stone A	17
Homer Stone B	2
Homer Stone C	3

Best Access: VT Rte 140 > Sugar Hill Rd > Wallingford Pond Rd > Town Hwy 38 UTV Trail

Intel Features: Primary Repeater - Killington. Snowmobile Trail, Apples