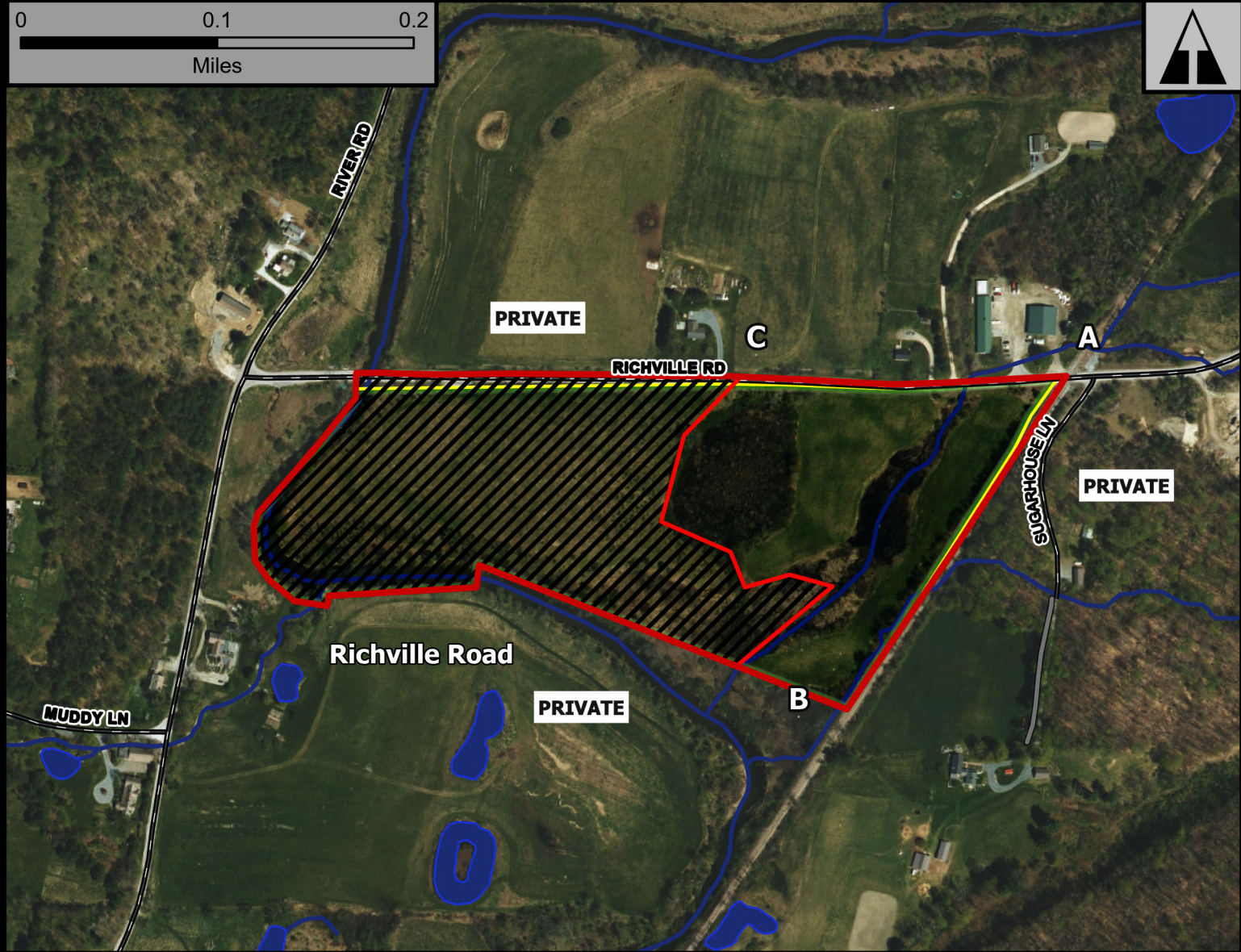
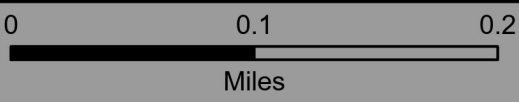


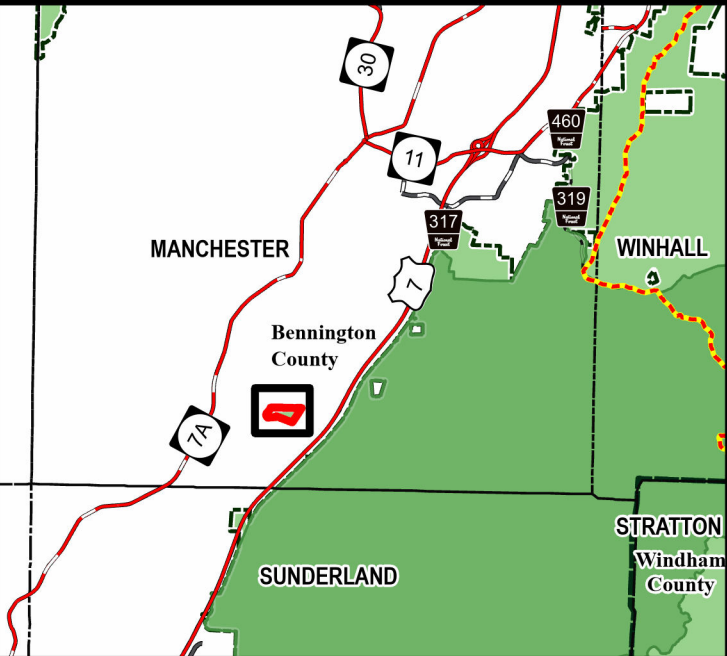
Richville Road



Geo Group: Richville Road



Green Mountain National Forest



- AT/LT
- 2024 Burn Unit
- Fire Exclusion Area
- Green Mountain NF

Manchester Ranger District
Town of Manchester
Bennington County
43.119°N -73.099°W
Elevation 690 Feet

Complexity: Moderate

Current Year Planned Acres: 29

OnSite Fuel Model:
GR2

Richville Road 29

Best Access: VT Rte 30, Richville Rd or via VT Rte 7A/River Rd

Intel Features: Primary Repeater Equinox. Wooden fence, Birdboxes, Riparian Plantings, NNIP. Request Manchester PD for traffic/smoke control. Private SE corner. Railroad to East. Propane facility to North.