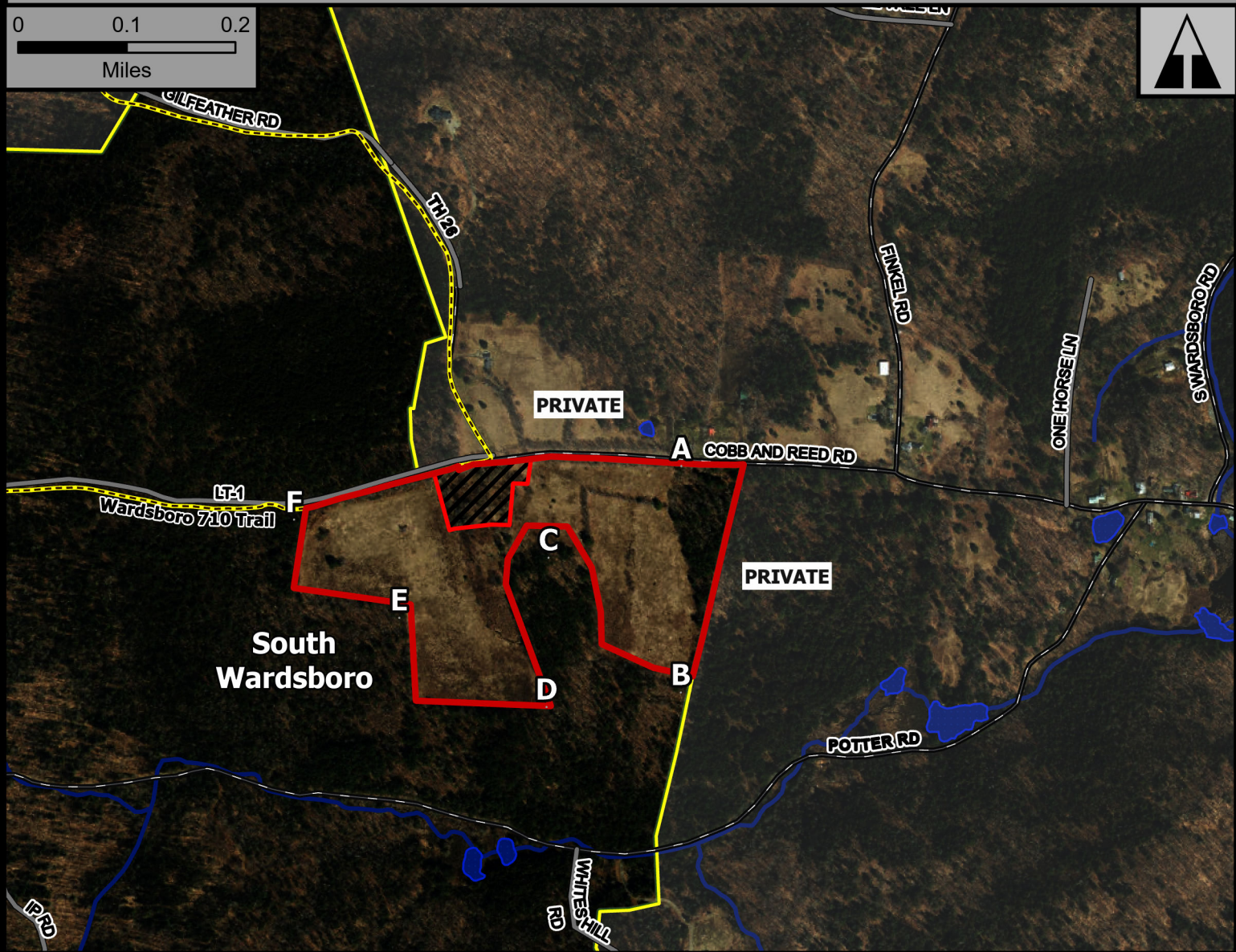
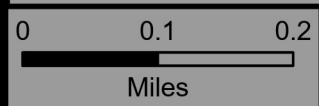


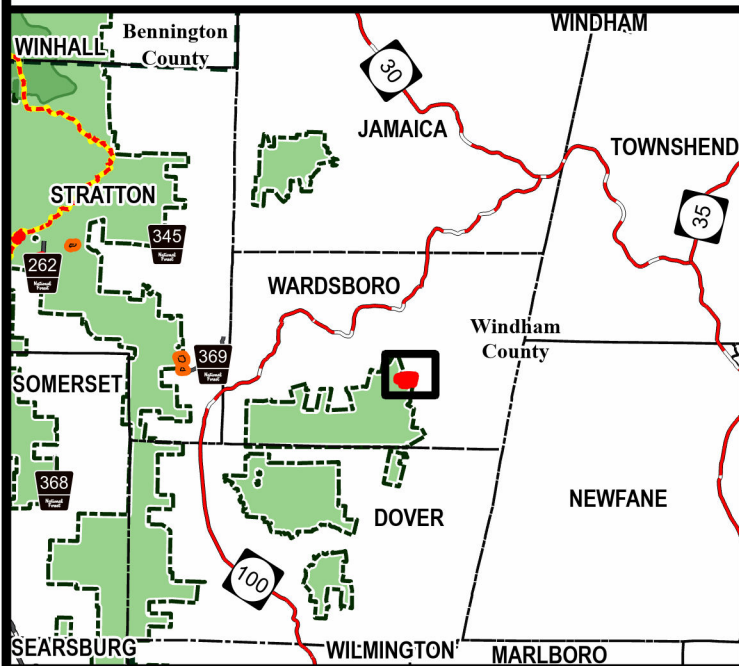
South Wardsboro



Geo Group: South Wardsboro



Green Mountain National Forest



Manchester Ranger District

Town of Wardsboro

Windham County

43.011°N -72.796°W

Elevation 1,890 Feet

--- AT/LT

▭ 2024 Burn Unit

▨ Fire Exclusion Area

▭ Green Mountain NF

Complexity: Moderate

Current Year Planned Acres: 38

OnSite Fuel Model:
GR2

South Wardsboro 38

Best Access: VT Rte 100 > South Wardsboro Rd > Cobb & Reed Hill Rd

Intel Features: Primary Repeater - Mount Snow. Powerlines, Poles, Apples, Cellarhole, Stonewalls, 10-15% Slope as critical holding feature, oak component NW corner near private