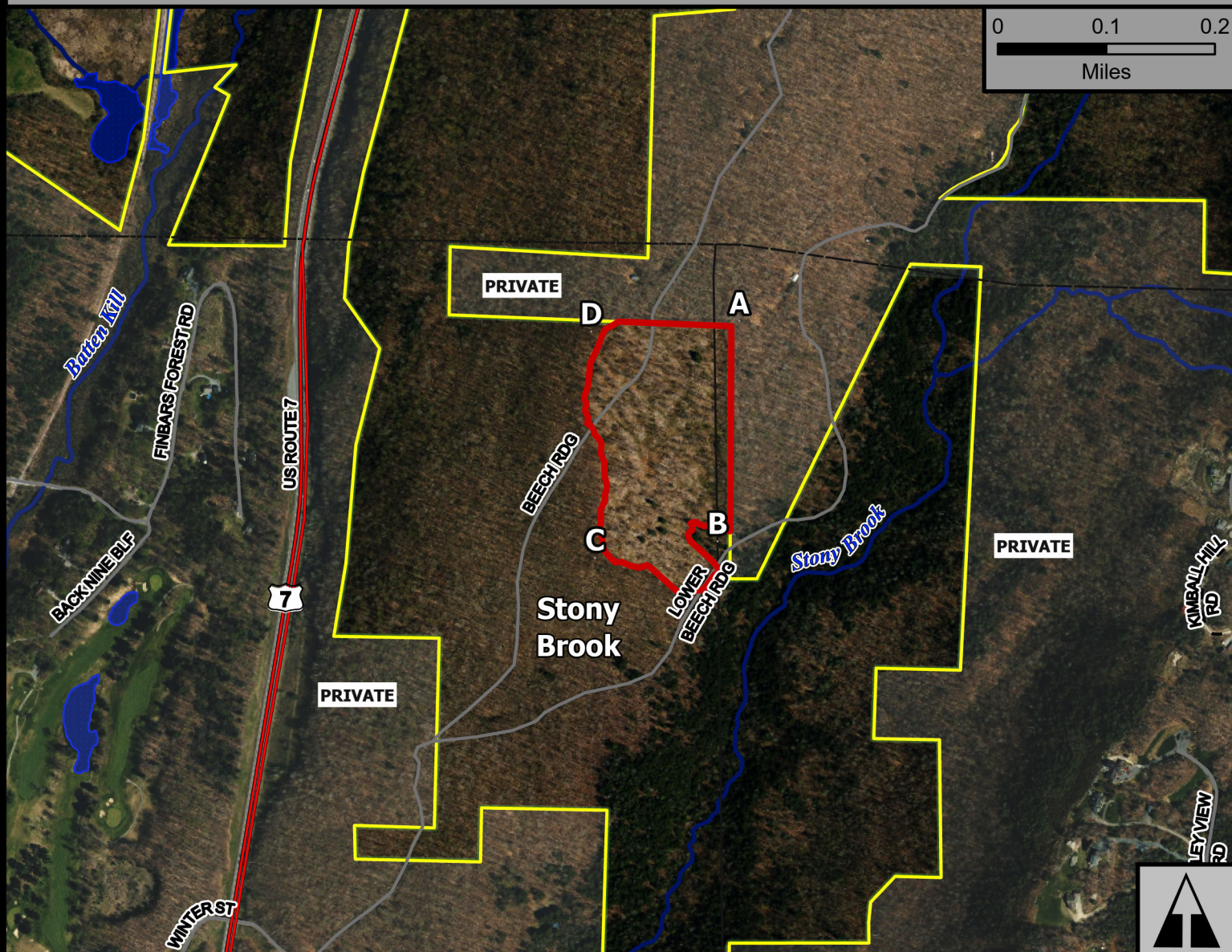


# Stony Brook



Geo Group: Manchester



Green Mountain National Forest



**Manchester Ranger District**

**Town of East Dorset**

**Bennington County**

**43.208°N -73.003°W**

**Elevation Feet**

- AT/LT
- 2024 Burn Unit
- Fire Exclusion Area
- Green Mountain NF

Complexity: Moderate

**Current Year Planned Acres: 17**

OnSite Fuel Model:  
TL6

Stony Brook	17
-------------	----

Best Access: From the South > VT Rte 30/11 > Tollgate Rd > Barnumville Rd > Winter St > Beech Ridge

Intel Features: Primary Repeater - Equinox. Private Camps to the north.

