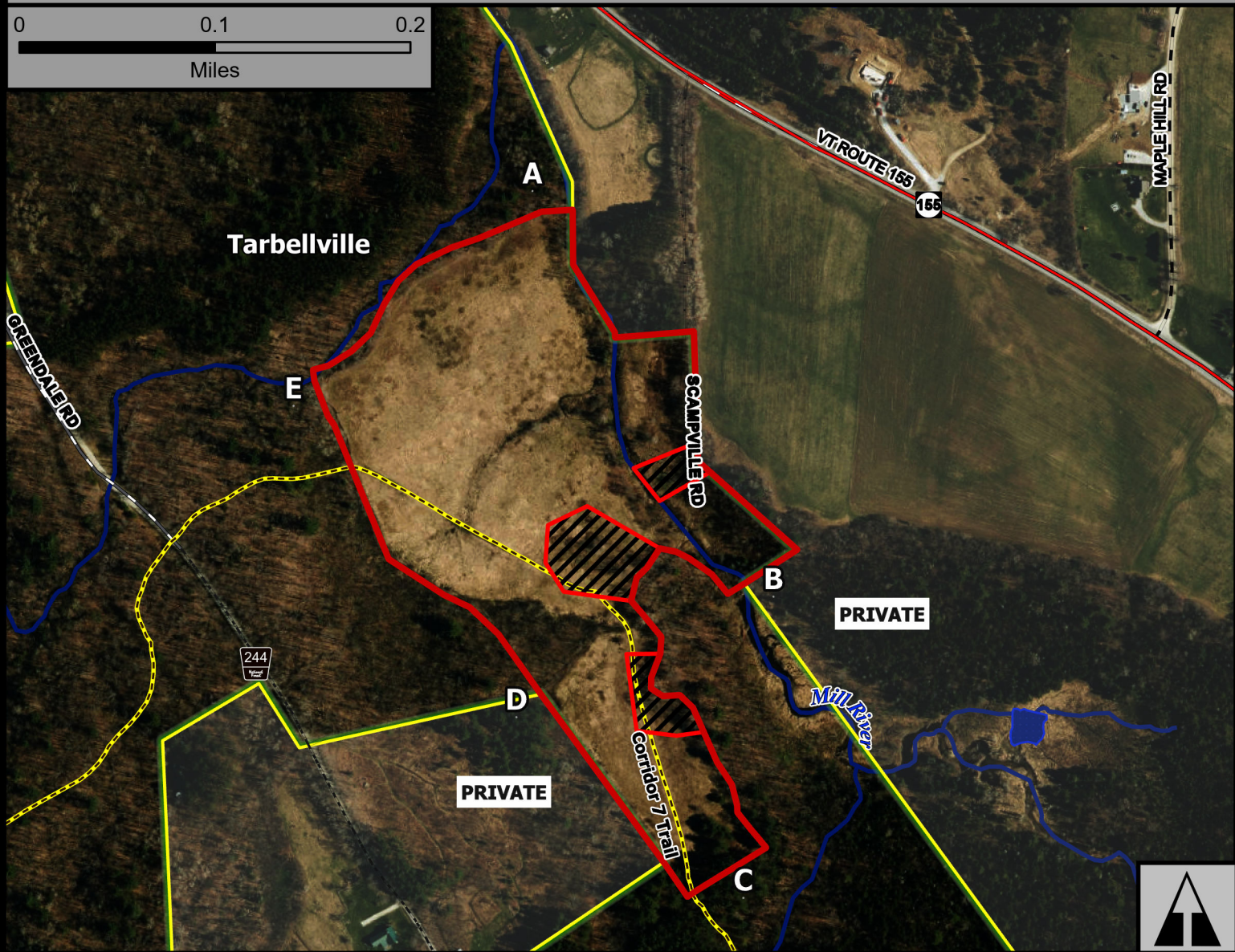
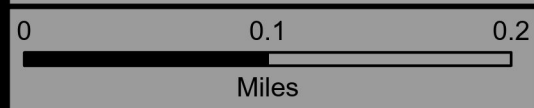


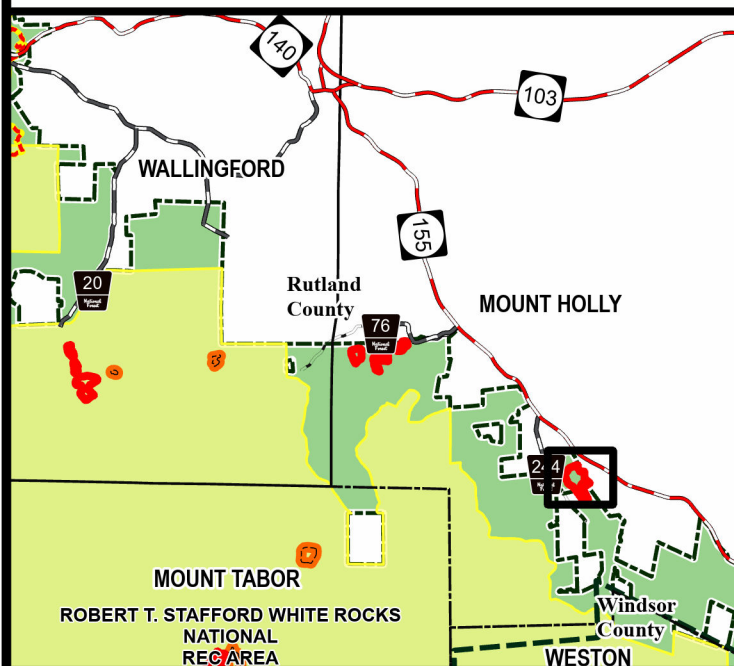
# Tarbellville



Geo Group: Mount Holly



Green Mountain National Forest



**Manchester Ranger District**  
**Town of Mount Holly**  
**Rutland County**  
**43.394°N -72.829°W**  
**Elevation 1,660 Feet**

- AT/LT
- 2024 Burn Unit
- Fire Exclusion Area
- Green Mountain NF

Complexity: Moderate

**Current Year Planned Acres: 25**

OnSite Fuel Model:  
GR3

Tarbellville 25

Best Access: VT Rte 155, Greendale Rd, parking at gate

Intel Features: Primary Repeater - Killington. Corridor 7 Trail, Apples, Birdboxes. Caution around wet areas with UTV