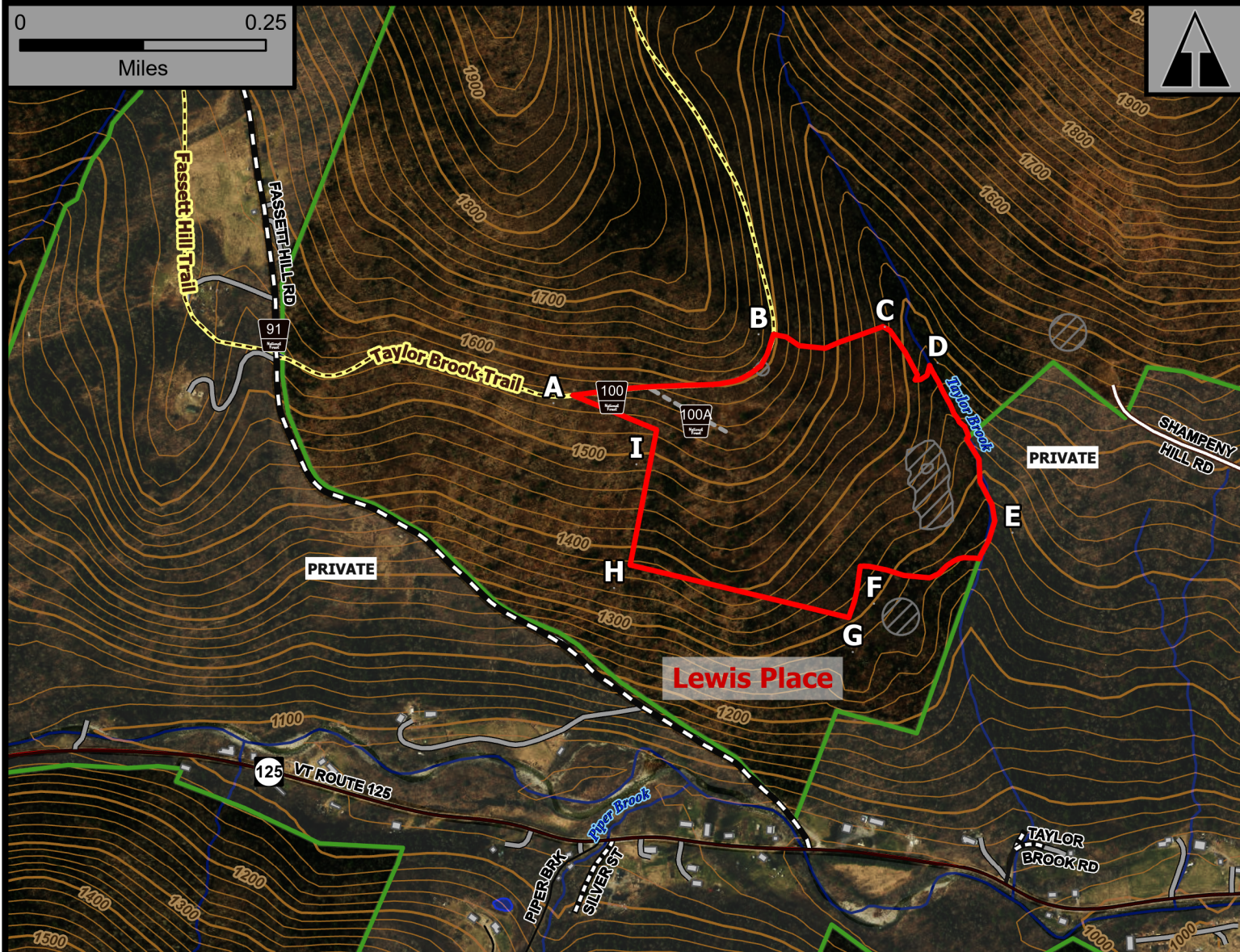


Lewis Place

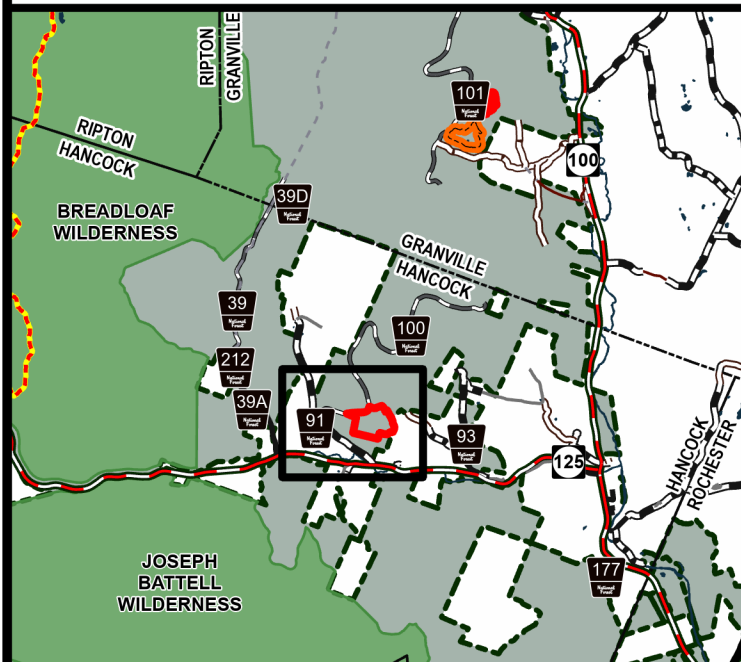
0 0.25
Miles



Geo Group: Hancock



Green Mountain National Forest



- Forest Trails
- Fire Exclusion Area
- 2025 Planned RXUnit
- Buildings
- National Forest

Rochester Ranger District

Town of Hancock

Addison County

43.933°N -72.882°W

Elevation 1,520 Feet

Complexity: Moderate

Current Year Planned Acres: 49

OnSite Fuel Model:
GR2/SH3

Lewis Place 49

Best Access: VT Rte 125 > FR91 Fasset Hill Rd > FR100 > FS Gate FR100A

Intel Features: Primary Repeater: Philly. 10-15% slope as critical holding feature. Exclude fire from butternut sapling and apple orchard.