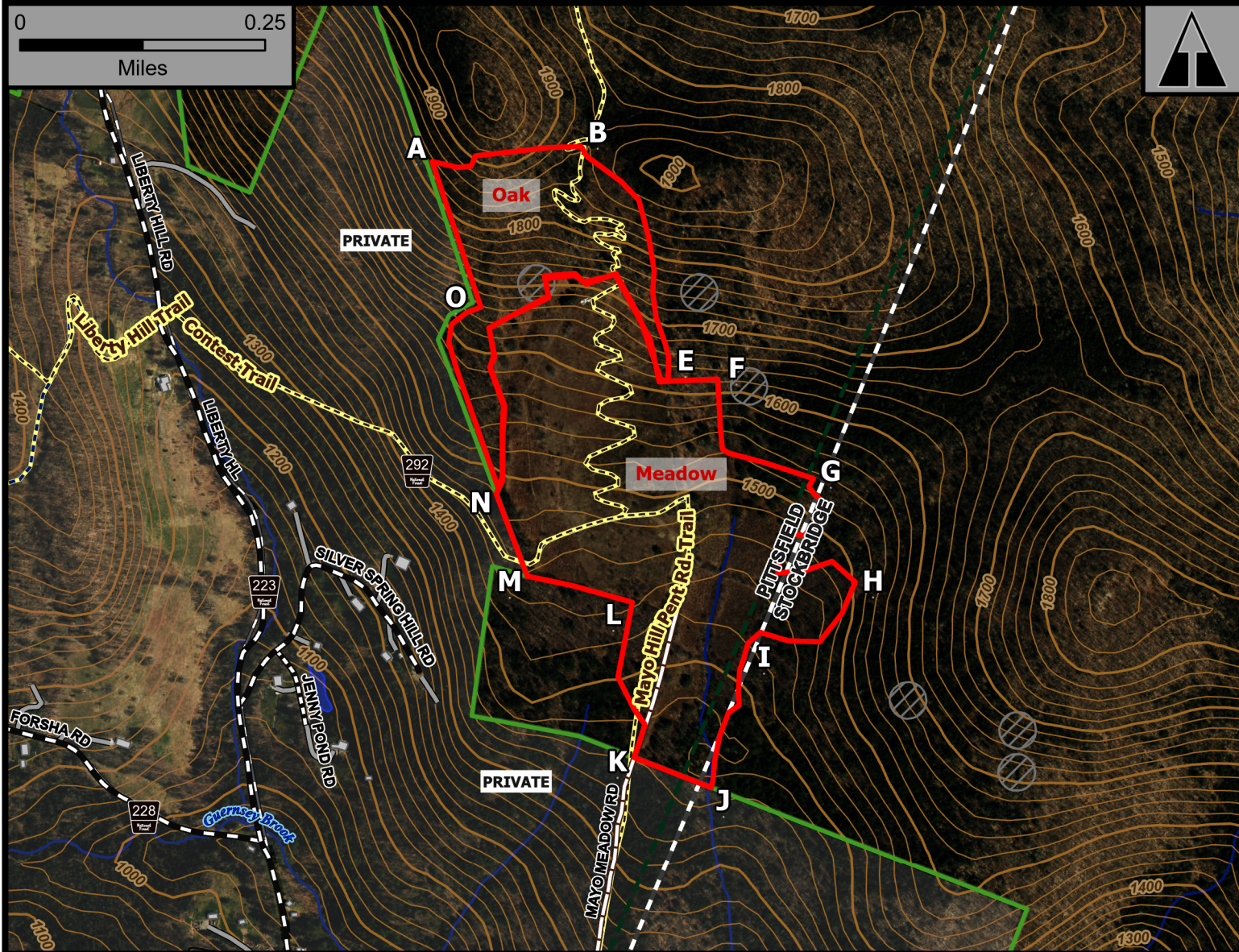


Mayo Meadow & Oak

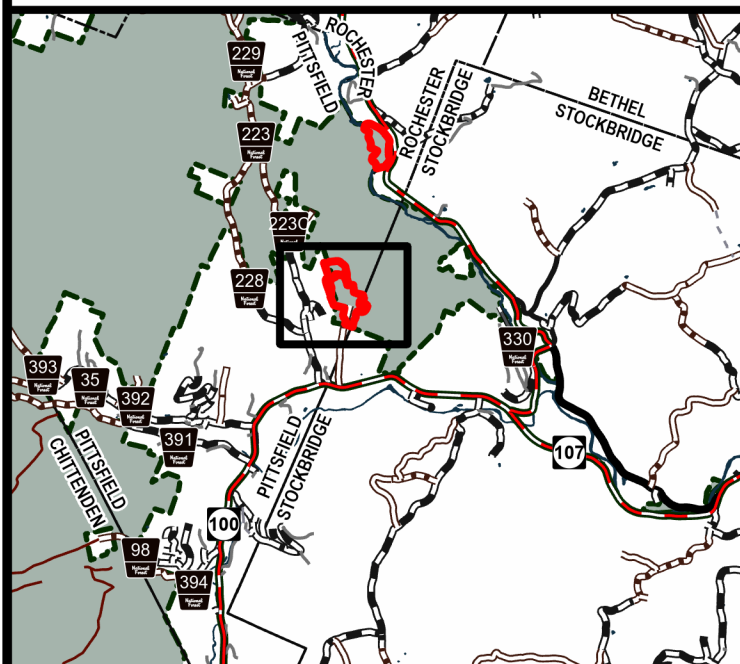
0 0.25
Miles



Geo Group: Rochester



Green Mountain National Forest



- Forest Trails
- Fire Exclusion Area
- 2025 Planned RXUnit
- Buildings
- National Forest

Rochester Ranger District
Town of Pittsfield & Stockbridge
Rutland & Windsor County
43.791°N -72.794°W
Elevation 1,500 Feet

Complexity: Moderate

Current Year Planned Acres: 83

OnSite Fuel Model:
GS3

Mayo Meadow	62
Mayo Oak	21

Best Access: VT Rte 100 Pittsfield> Liberty Hill> FR292

Intel Features: Contest Trail, Apples, Birdboxes, Signs, Remove NNIP fabric, 10-15% Slope as critical holding feature. Maximum Management Area. Requires ground-nesting bird walk through by District Wildlife May 1 - May 31. Primary repeater: Killington.