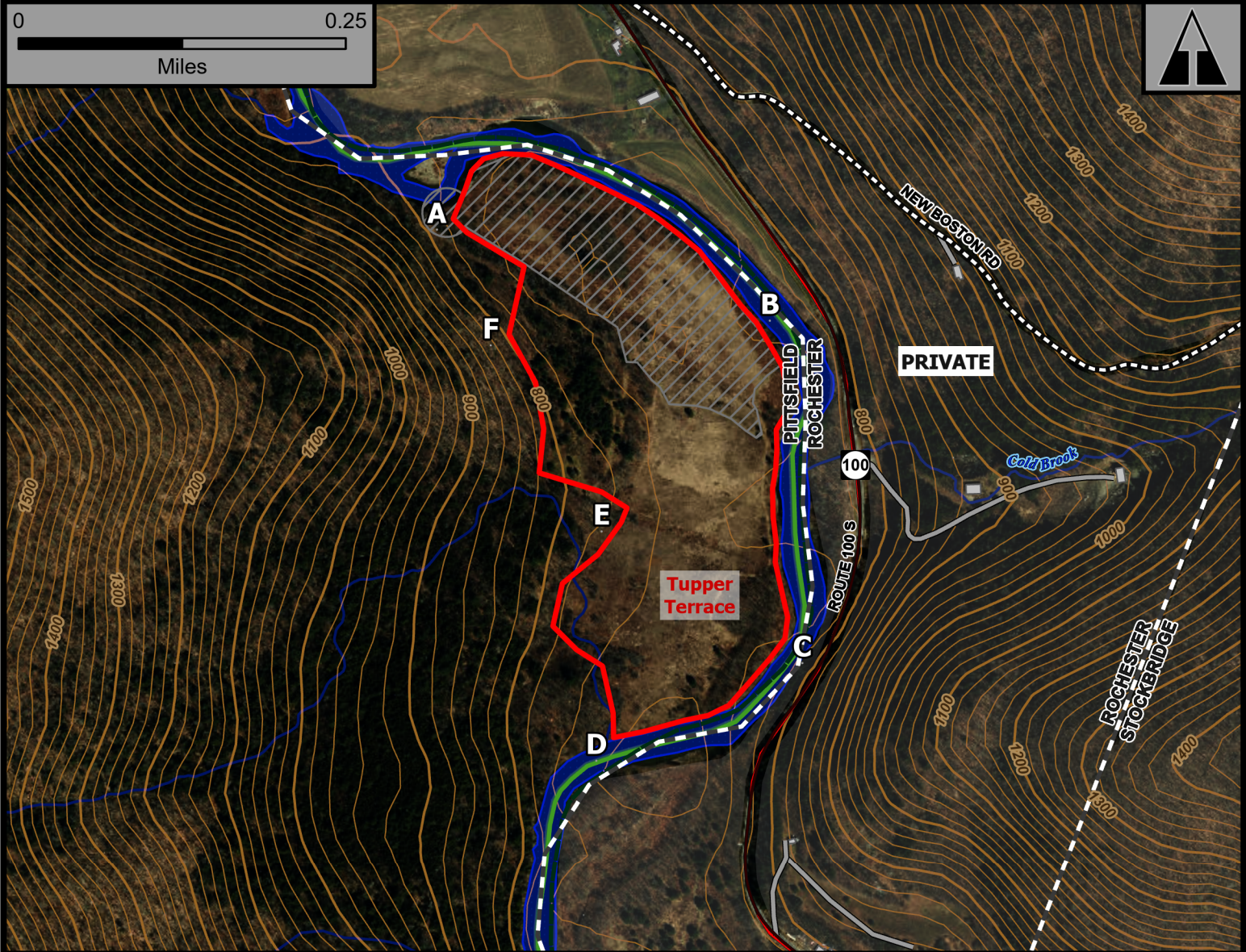


# Tupper Terrace

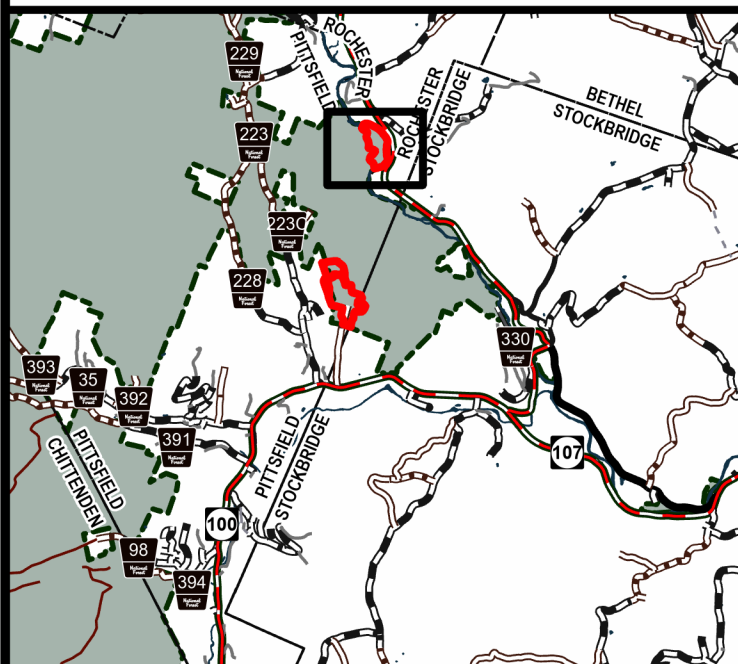
0 0.25  
Miles



Geo Group: Rochester



Green Mountain National Forest



Rochester Ranger District

Town of Rochester

Rutland County

43.813°N -72.786°W

Elevation 760 Feet

- Fire Exclusion Area
- 2025 Planned RXUnit
- Buildings
- National Forest

Complexity: Moderate

Current Year Planned Acres: 42

OnSite Fuel Model:  
GR2

Tupper Terrace 42

Best Access: VT Rte 100 > Liberty Hill Rd (Rochester access) > Emerson Rd > Request permission to access through Littlehayle's property > Parking in opening > Hike in

Intel Features: NNIP, Milkweed, Riparian Elm Planting. Requires wood turtle and ground-nesting bird survey 1 day prior to planned ignitions. Contact Littlehayles to access through private property, 1 hour hike in, Request LEOs for smoke management along Route 100