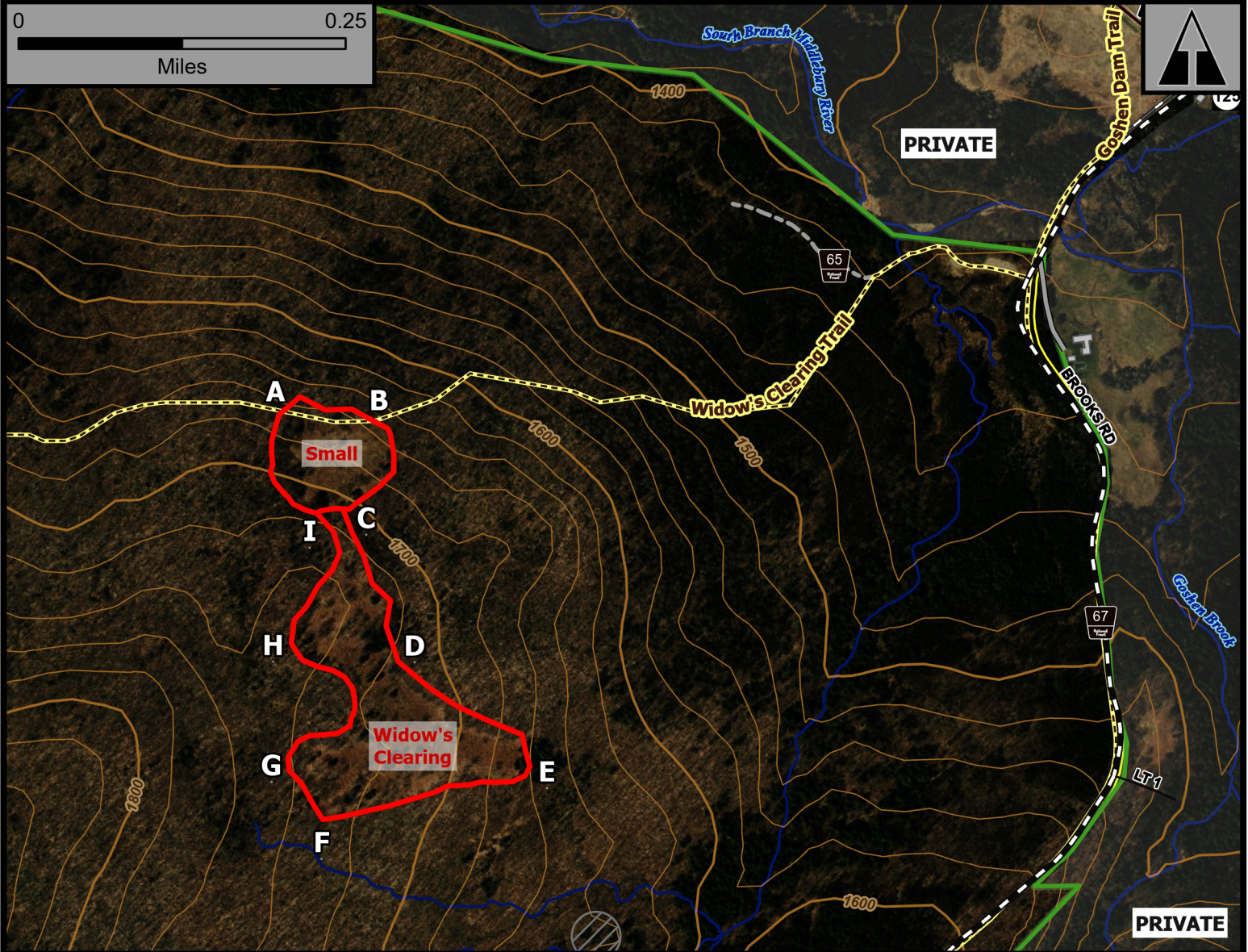
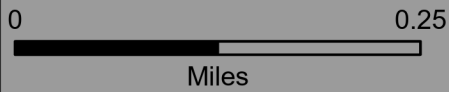


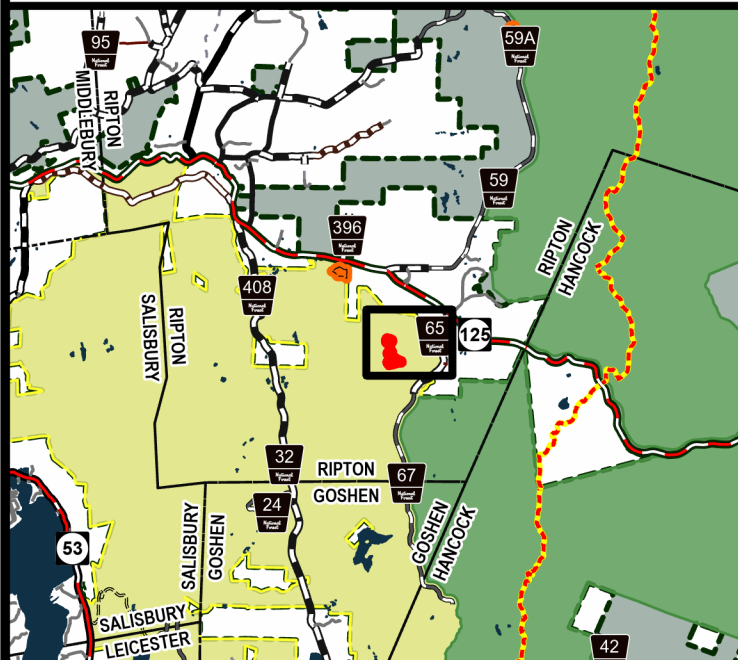
Widow's Clearing



Geo Group: Ripton



Green Mountain National Forest



- Forest Trails
- Fire Exclusion Area
- 2025 Planned RXUnit
- Buildings
- National Forest

Rochester Ranger District

Town of Ripton

Addison County

43.943°N -72.996°W

Elevation 1,730 Feet

Complexity: Low

Current Year Planned Acres: 16

OnSite Fuel Model:
GS3

Widow's Clearing	12
Clearing Small	4

Best Access: VT Rte 125 > Brooks Rd > FR65 Widow's Clearing Trail

Intel Features: Half hour hike in, Fire weakened snags, boulders.
Requires ground-nesting bird walk through by District Wildlife May 1 - May 31.