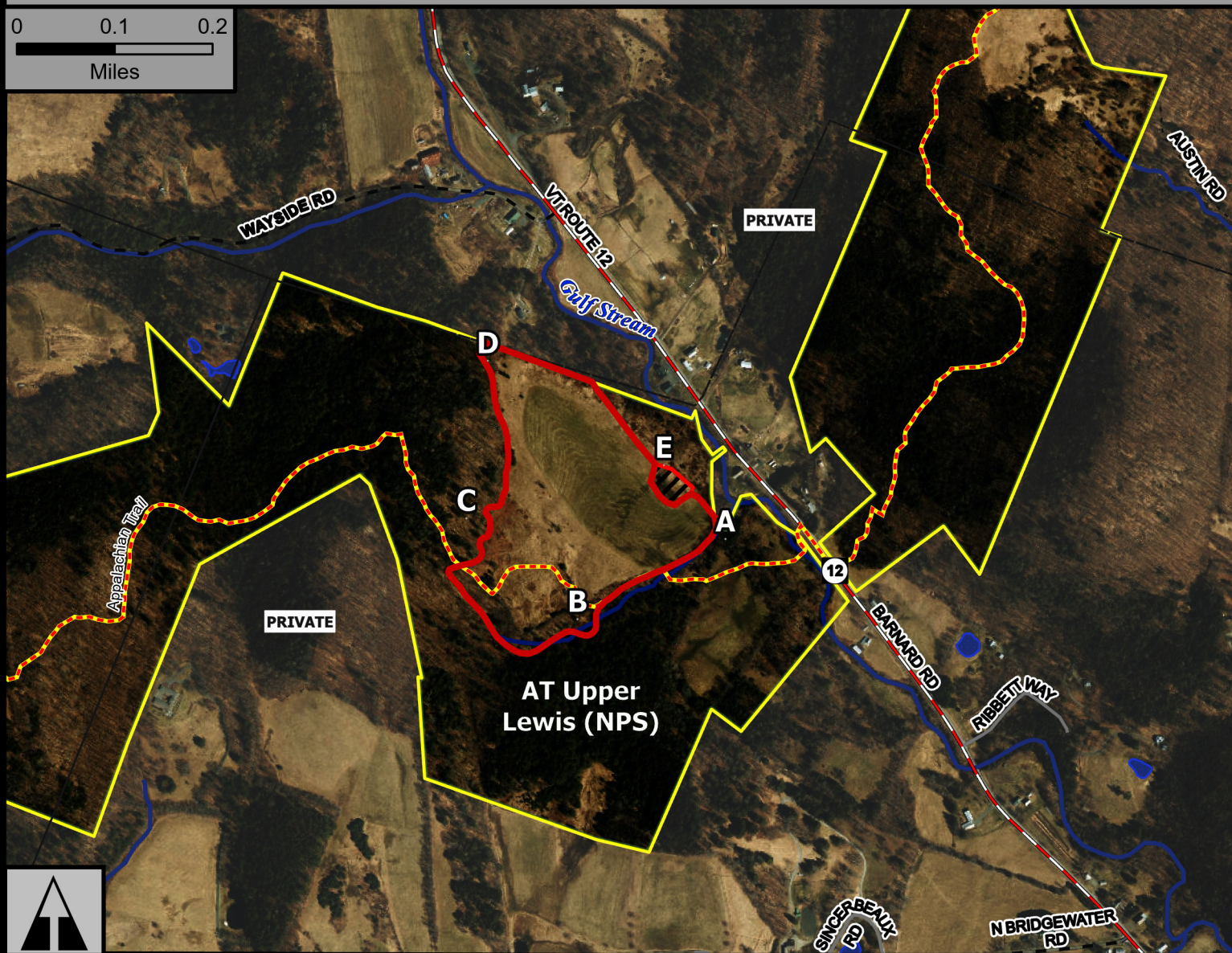
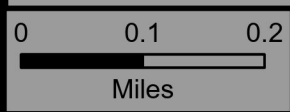


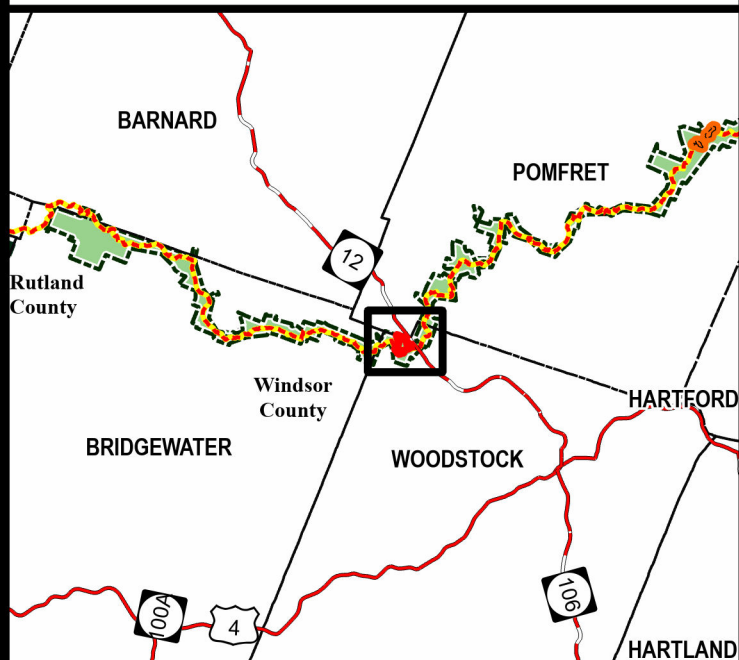
AT Upper Lewis (NPS)



Geo Group: Woodstock



Green Mountain National Forest



Rochester Ranger District

Town of Woodstock

Windsor County

43.655°N -72.571°W

Elevation 940 Feet

- AT/LT
- 2024 Burn Unit
- Fire Exclusion Area
- Green Mountain NF

Complexity: Moderate

Current Year Planned Acres: 28

OnSite Fuel Model:
GR2

Upper Lewis	28
-------------	----

Best Access: VT Rte 12 > Woodstock/Pomfret town line

Intel Features: Primary Repeater - Killington. Appalachian Trail, Protect historic Prosper ski hut, 10-20% Slope as critical holding feature. Notify GMC and ATC Partners