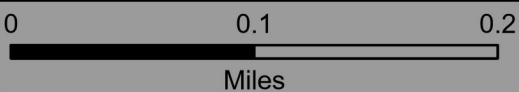
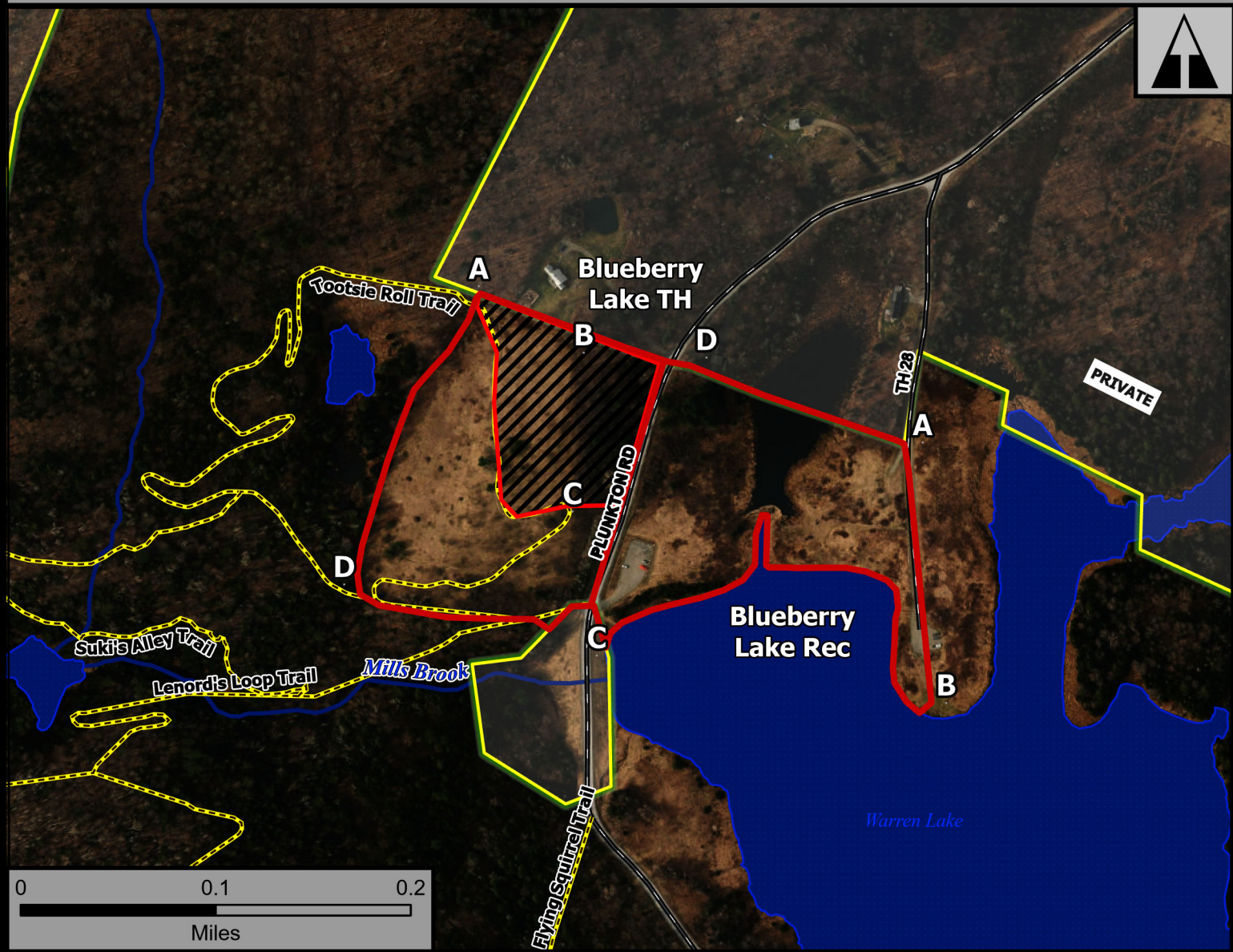


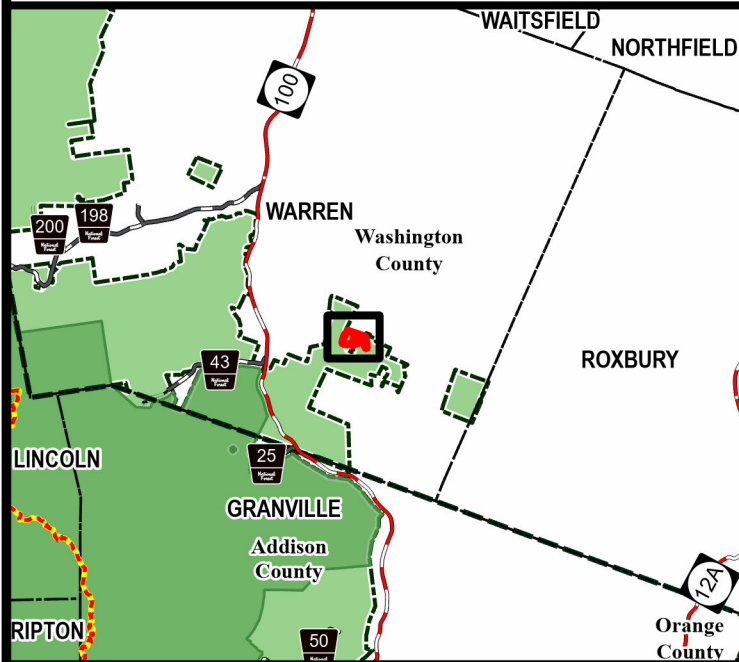
Blueberry Lake TH & Rec



Geo Group: Blueberry Lake



Green Mountain National Forest



Rochester Ranger District
Town of Warren
Washington County
44.081°N -72.840°W
Elevation 1,610 Feet

| | | |
|-------------------------------|---------------------------------------|----|
| Complexity: Moderate | Current Year Planned Acres: 21 | |
| OnSite Fuel Model: SH3/GS2 | Trailhead | 12 |
| | Rec Area | 10 |

Best Access: VT Rte 100 > Plunkton Rd > Blueberry Lake Parking Lot

Intel Features: Primary Repeater - Lincoln. Recreation Area, Fire Exclusion area denoted in NE corner of Trailhead unit.