



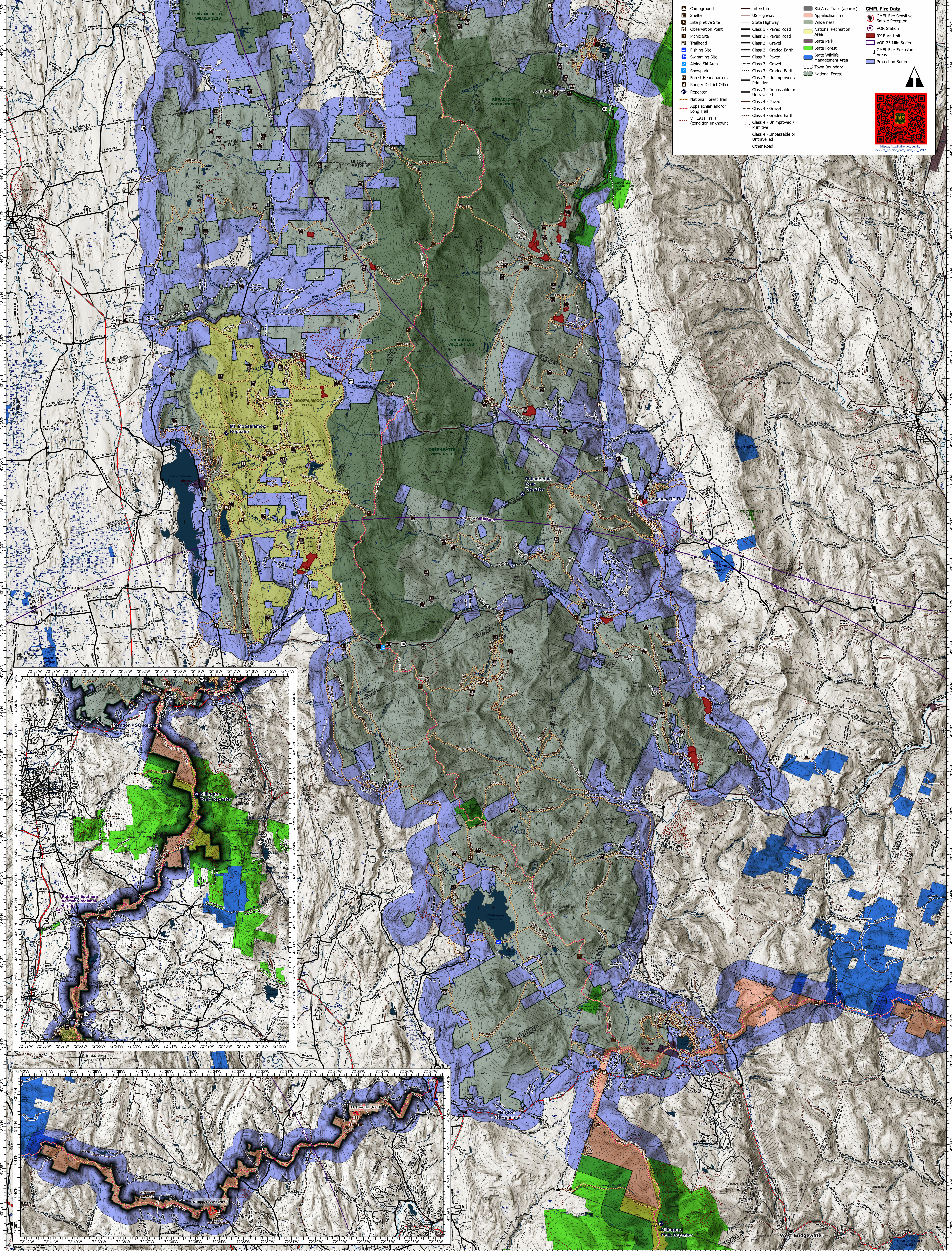
U.S. Department of Agriculture
Forest Service
Eastern Region (R9)
GREEN MOUNTAIN NATIONAL FOREST
BASE MAP
RX Fire Burn Units
(North Zone)



Base data in NAD 83 UTM 18N projection.
Map Date: 27 February 2025. Prepared by: JPhelan.

This product is produced from geospatial information prepared by the U.S. Department of Agriculture, Forest Service. The Forest Service cannot assure the reliability of this information for a particular purpose. Original data elements were compiled from various sources. Spatial information may not meet National Map Accuracy Standards. This information may be spotted, corrected, or otherwise modified without notification.

For additional information about this data, please contact the Green Mountain National Forest at <https://www.fs.usda.gov/gmfnf>.
For additional information about State of Vermont data visit <https://vrgi.vermont.gov/>



Campground	Interstate	Ski Area Trails (approx)	GMFL Fire Data GMFL Fire Sensitive Smoke Receptor VOR Station RX Burn Unit GMFL Fire Exclusion Areas Protection Buffer
Shelter	US Highway	Appalachian Trail	
Interpretive Site	State Highway	Wilderness	
Observation Point	Class 1 - Paved Road	National Recreation Area	
Picnic Site	Class 2 - Graded Earth	State Park	
Trailhead	Class 3 - Paved	State Forest	
Fishing Site	Class 3 - Gravel	State Wildlife Management Area	
Swimming Site	Class 3 - Graded Earth / Primitive	Town Boundary	
Alpine Ski Area	Class 3 - Unimproved / Untraveled	National Forest	
Snowpark	Class 4 - Impassable or Untraveled		
Forest Headquarters	Class 4 - Paved		
Ranger District Office	Class 4 - Gravel		
Repeater	Class 4 - Graded Earth / Primitive		
National Forest Trail	Class 4 - Unimproved / Untraveled		
Appalachian and/or Long Trail	Class 4 - Impassable or Untraveled		
VT 0911 Trails (condition unknown)	Other Road		

