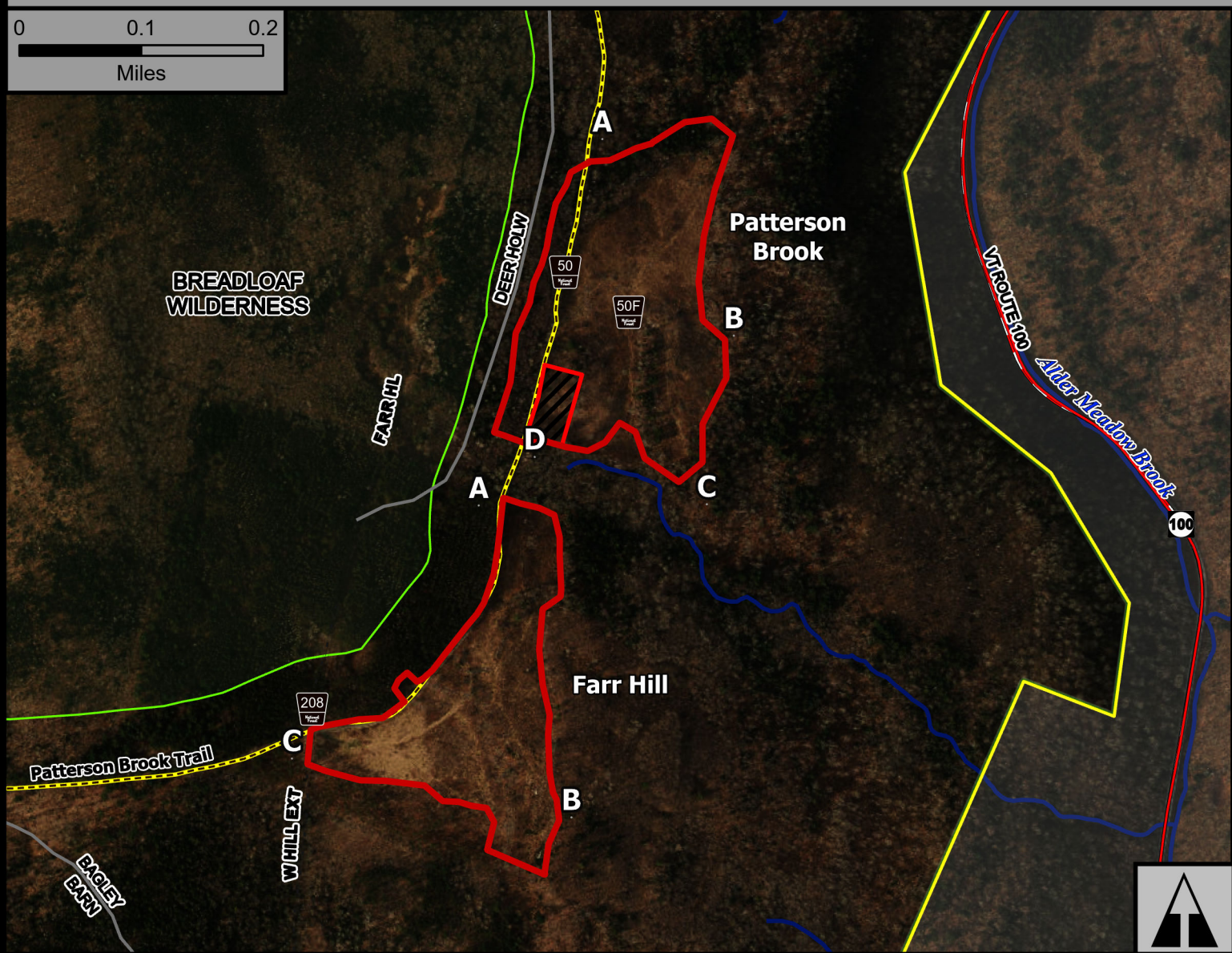
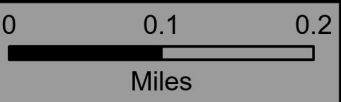
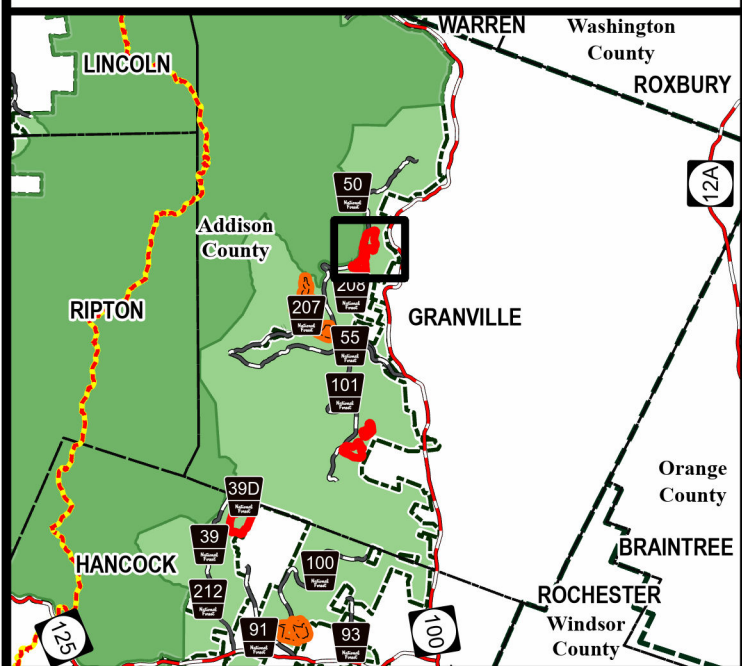


Patterson-Farr Hill



Geo Group: Granville

USDA Green Mountain National Forest 



Rochester Ranger District
Town of Granville
Addison County
44.013°N -72.858°W
Elevation 1,820 Feet

Complexity: Low	Current Year Planned Acres: 41
OnSite Fuel Model: TL6	Patterson Brook 24 Farr Hill 17

Best Access: VT Rte 100 > W.Hill Rd > Patterson Brook/FR50

Intel Features: Primary Repeater - Philadelphia or Lincoln. 10-20% Slope as critical holding feature