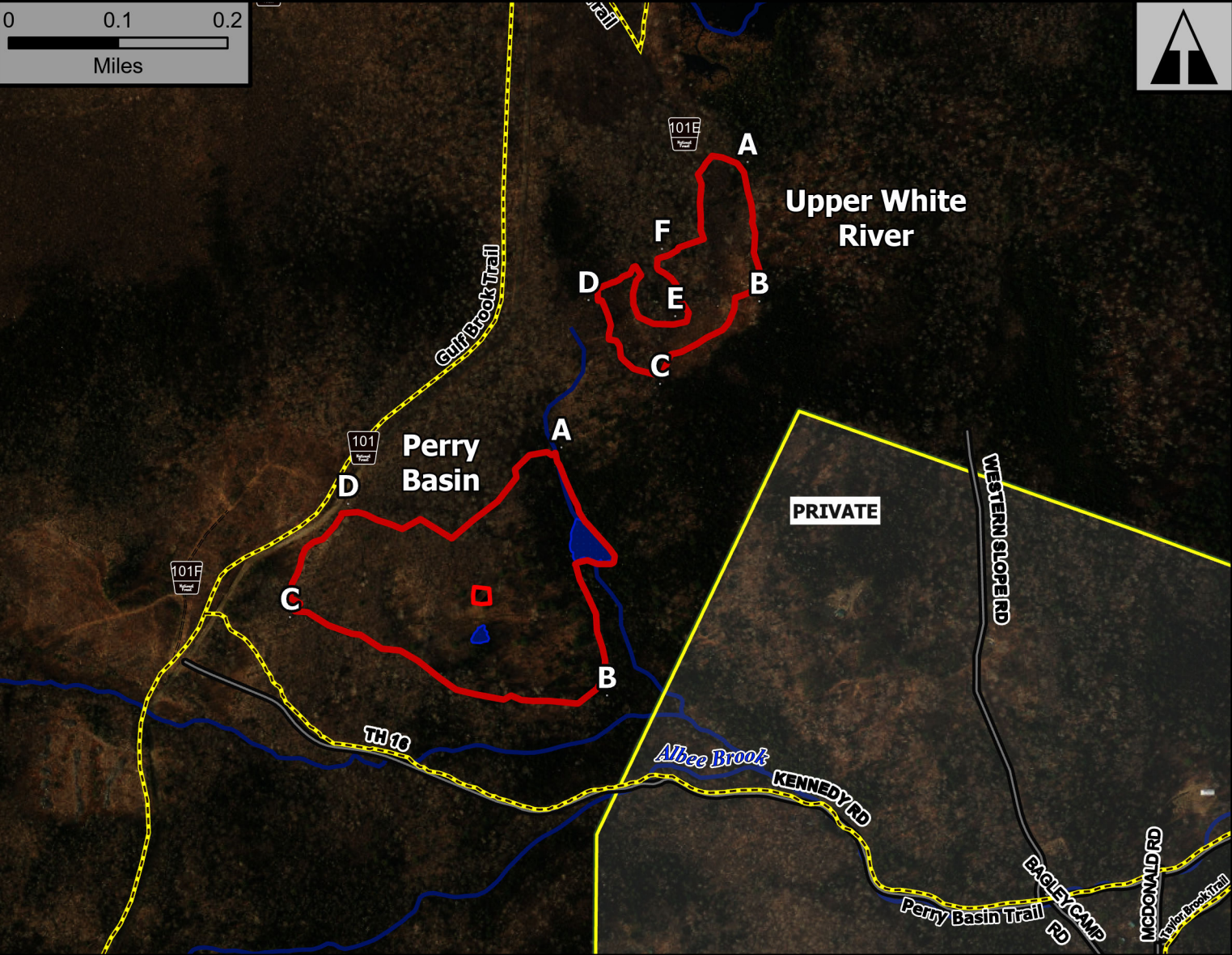
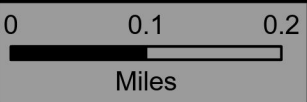


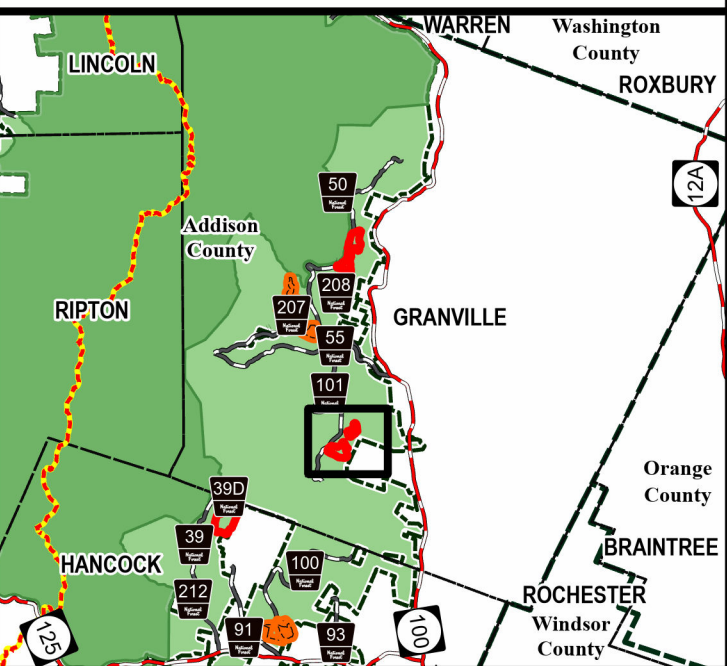
Upper White River & Perry Basin



Geo Group: Granville



Green Mountain National Forest



- AT/LT
- 2024 Burn Unit
- Fire Exclusion Area
- Green Mountain NF

Rochester Ranger District
Town of Granville
Addison County
43.970°N -72.865°W
Elevation 1,770 Feet

Complexity: Low	Current Year Planned Acres: 8	
OnSite Fuel Model: TL6	Upper White	8
	Perry Basin	26

Best Access: VT Rte 100>W.Hill Rd/FR50>FR101

Intel Features: Primary Repeater - Philadelphia or Lincoln.10-20% Slope as critical holding feature