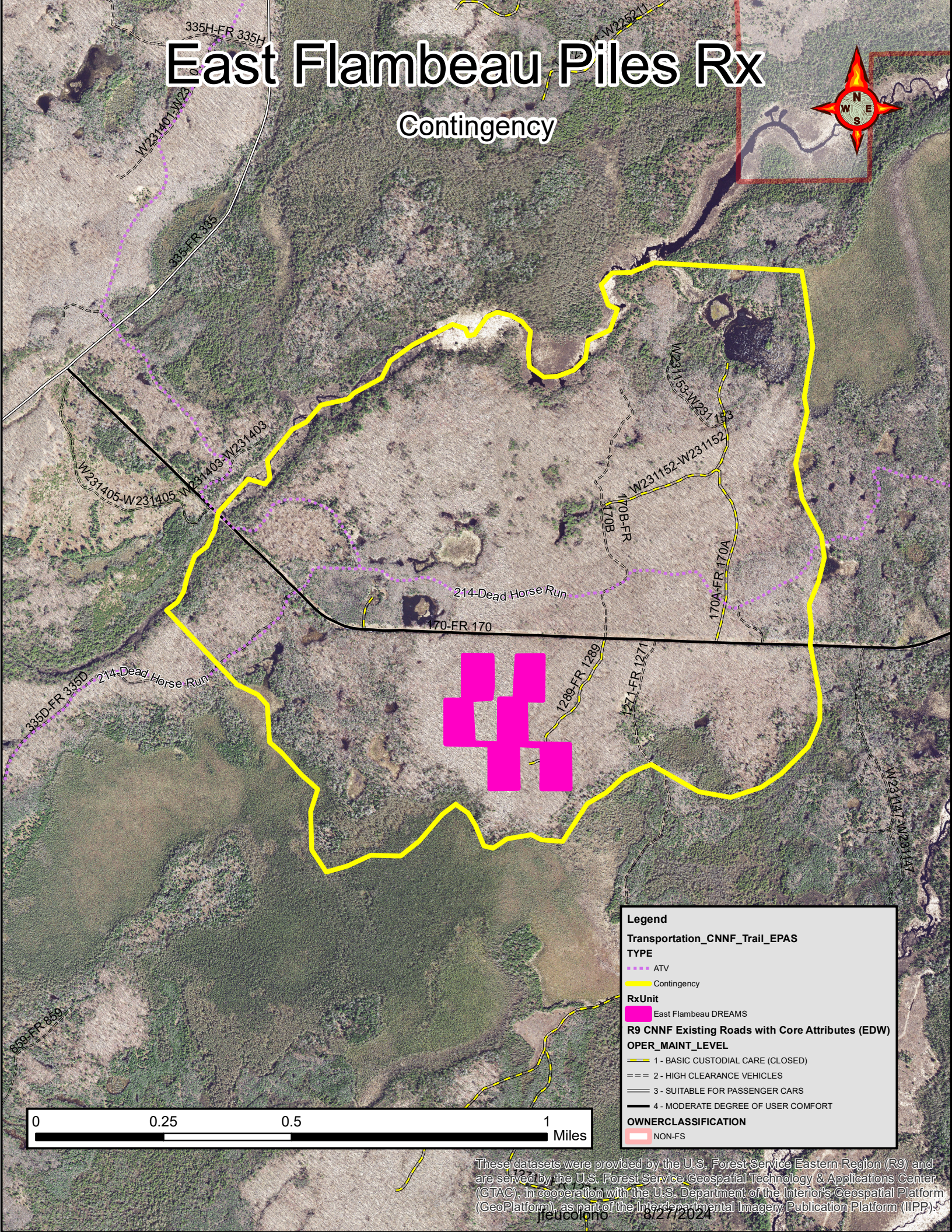


# East Flambeau Piles Rx

## Contingency



**Legend**

**Transportation\_CNNF\_Trail\_EPAS TYPE**

- ATV
- Contingency

**RxUnit**

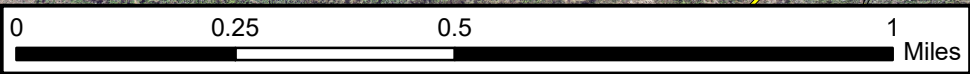
- East Flambeau DREAMS

**R9 CNNF Existing Roads with Core Attributes (EDW) OPER\_MAINT\_LEVEL**

- 1 - BASIC CUSTODIAL CARE (CLOSED)
- 2 - HIGH CLEARANCE VEHICLES
- 3 - SUITABLE FOR PASSENGER CARS
- 4 - MODERATE DEGREE OF USER COMFORT

**OWNERCLASSIFICATION**

- NON-FS



These datasets were provided by the U.S. Forest Service Eastern Region (R9) and are served by the U.S. Forest Service Geospatial Technology & Applications Center (GTAC), in cooperation with the U.S. Department of the Interior's Geospatial Platform (GeoPlatform), as part of the Interdepartmental Imagery Publication Platform (IIPP).