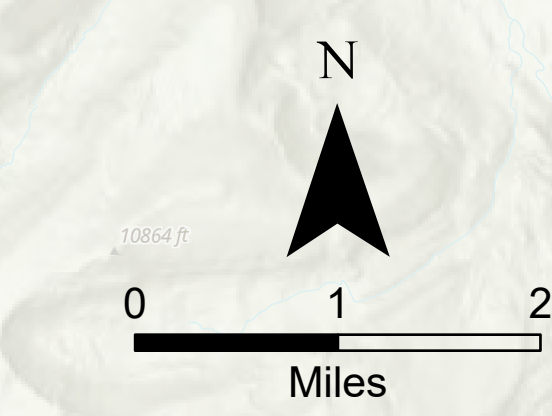
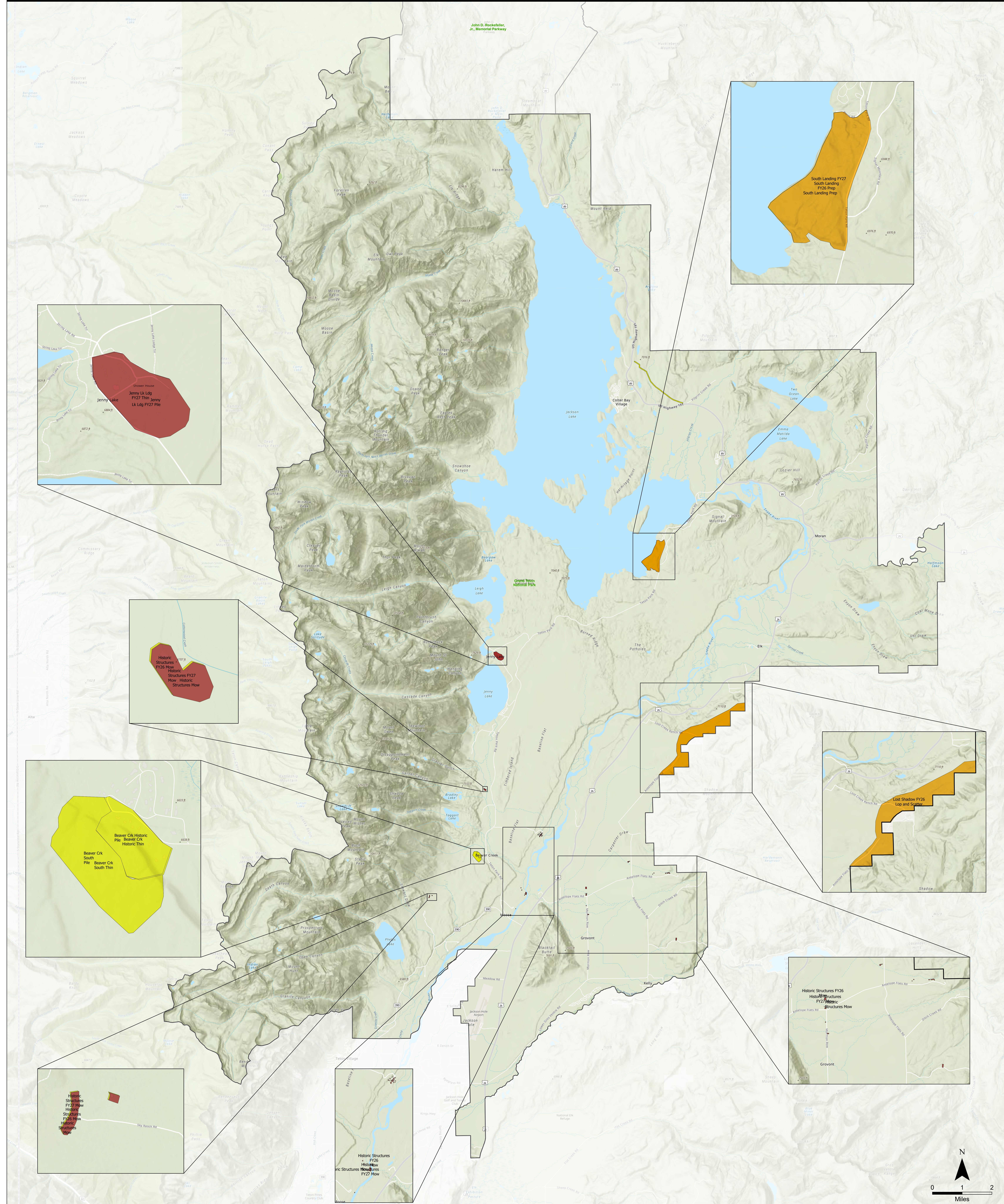


PROGRAM OF WORK FY25-27

National Park Service
U.S. Department of the Interior



GRAND TETON NATIONAL PARK 2025

- NPS Boundary
- Planned 2025 Treatment
- Planned 2026 Treatment
- Planned 2027 Treatment

Treatment Name	Type	Category	Initiation Fiscal Year	Calculated Acres	Treatment Name	Type	Category	Initiation Fiscal Year	Calculated Acres
GRTE Historic Structures FY25 Mow - BIL	Fuel Compaction	Mechanical	2025	17	GRTE Historic Structures FY26 Mow - BIL	Fuel Compaction	Mechanical	2026	17
GRTE South Landing FY25 Prep - BIL	Log and Scatter	Mechanical	2025	264	GRTE Lost Shadow FY26 Log and Scatter - BIL	Log and Scatter	Mechanical	2026	264
GRTE Beaver Crk Historic FY25 Pile - BIL	Pile	Mechanical	2025	15	GRTE South Landing FY26 Prep - BIL	Log and Scatter	Mechanical	2026	264
GRTE Beaver Crk South FY25 Pile - BIL	Pile	Mechanical	2025	32	GRTE South Landing FY27 RX	Broadcast	Planned Ignition	2027	264
GRTE Powerline S FY25 Pile RX - BIL	Pile Burn	Planned Ignition	2025	44	GRTE Historic Structures FY27 Mow	Fuel Compaction	Mechanical	2027	17
GRTE Beaver Crk Historic FY25 Thin - BIL	Thinning	Mechanical	2025	15	GRTE Jenny Lk Ldg FY27 Pile	Pile	Mechanical	2027	37
GRTE Beaver Crk South FY25 Thin - BIL	Thinning	Mechanical	2025	32	GRTE Jenny Lk Ldg FY27 Thin	Thinning	Mechanical	2027	38

1:60,000 | IMR PAM GIS | 2/13/2025 11:07 | NAD 1983 2011 Datum, Lat/Long Grid