

Stuart Creek 2
 AK-MID-000280
 07/09/2013 Day Shift
 TFR Map
 Approx: 82,274 ac
Perimeter as of 07/09/13 @ 1400hrs
 Datum: NAD 1983

Branch I

DIV R

DIV S

DIV P

DIV A

DIV M

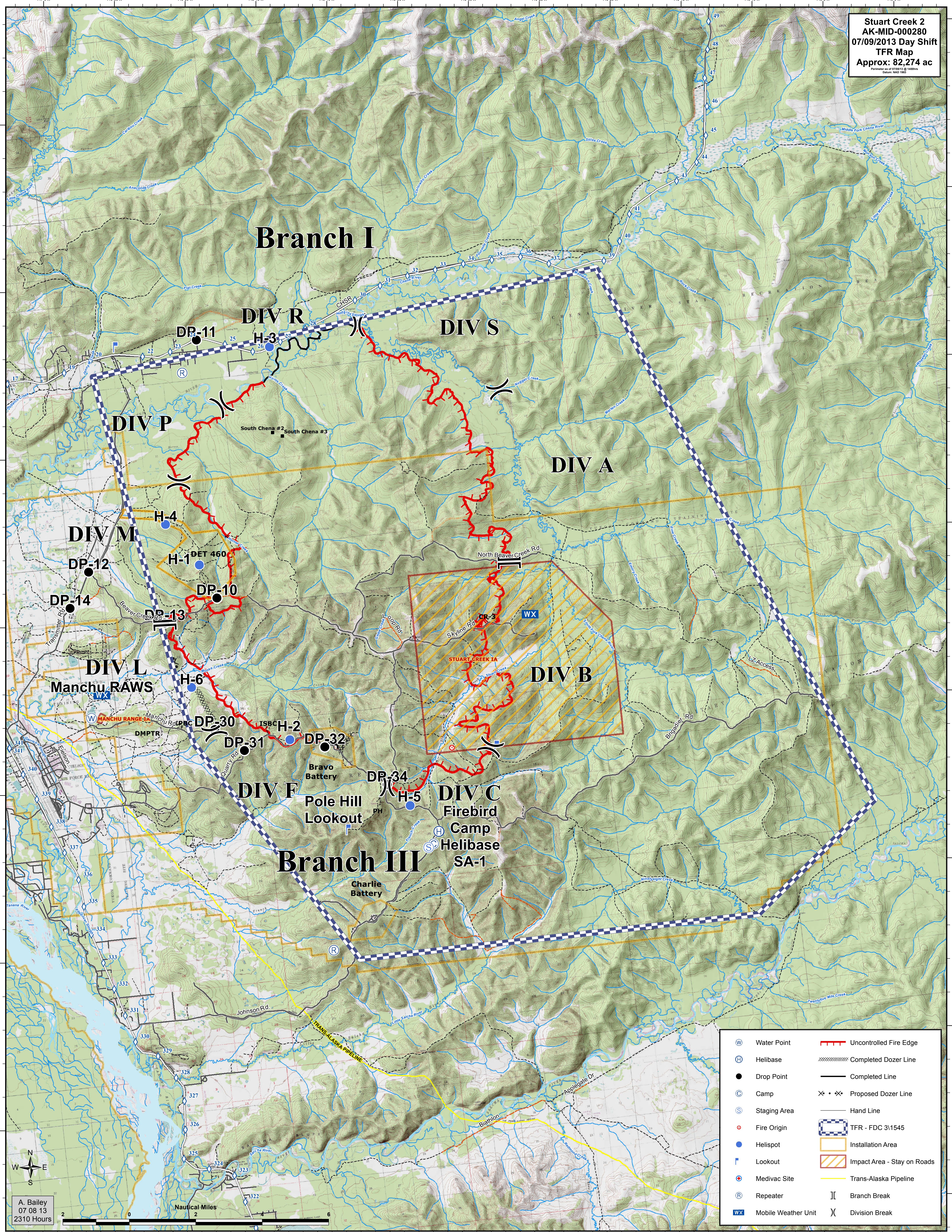
DIV B

DIV L
 Manchu RAWS

DIV F

DIV C

Branch III



(W)	Water Point	(---)	Uncontrolled Fire Edge
(H)	Helibase	(-----)	Completed Dozer Line
(●)	Drop Point	(———)	Completed Line
(C)	Camp	(x·x·x)	Proposed Dozer Line
(S)	Staging Area	(———)	Hand Line
(●)	Fire Origin	(- - - - -)	TFR - FDC 31545
(●)	Helispot	(---)	Installation Area
(L)	Lookout	(//)	Impact Area - Stay on Roads
(●)	Medivac Site	(———)	Trans-Alaska Pipeline
(R)	Repeater	()	Branch Break
(WX)	Mobile Weather Unit	()	Division Break

A. Bailey
 07 08 13
 2310 Hours

