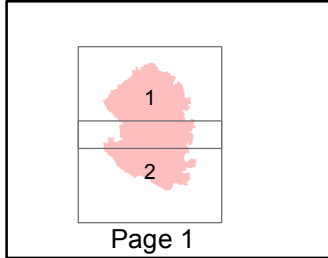
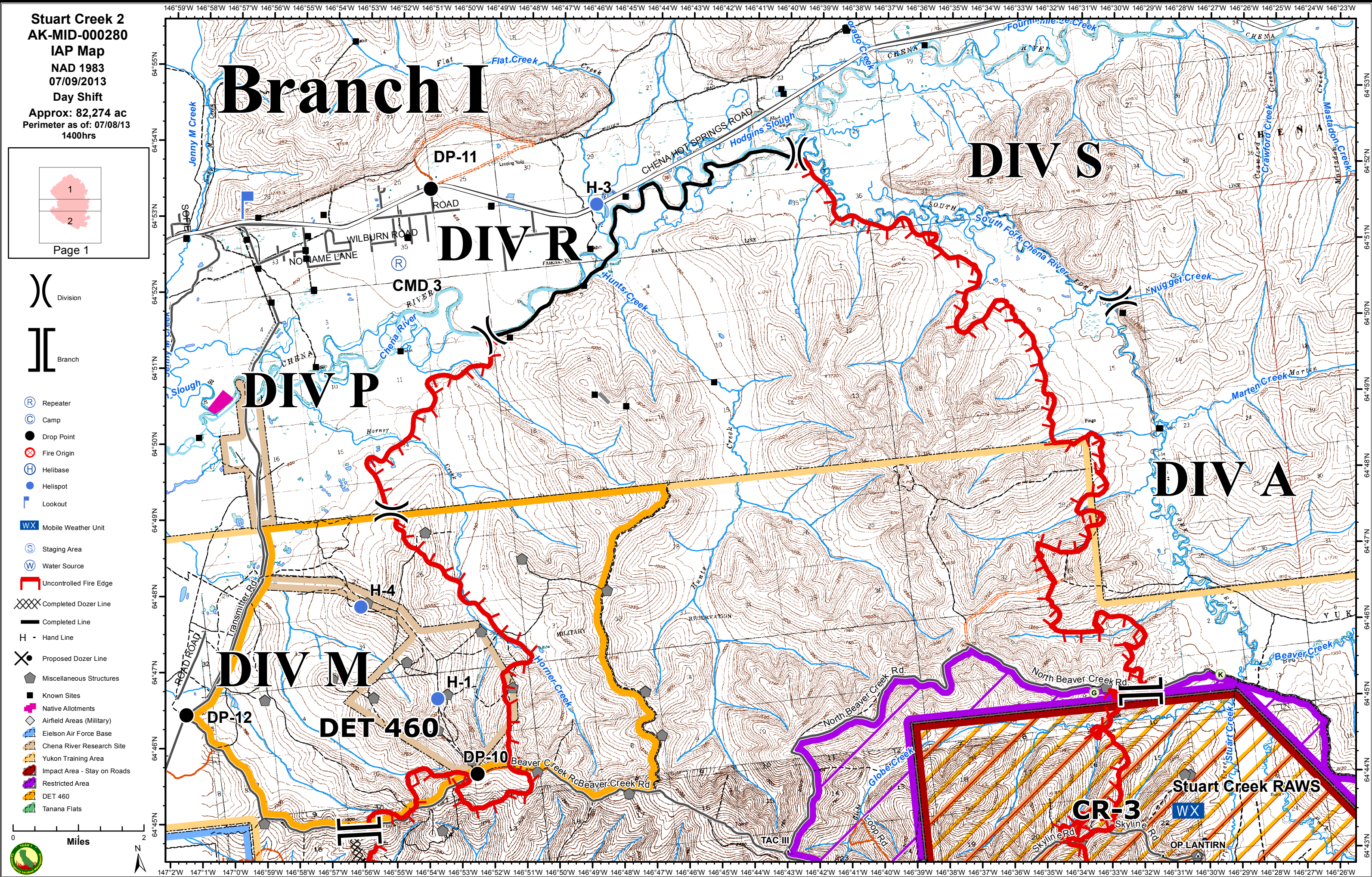


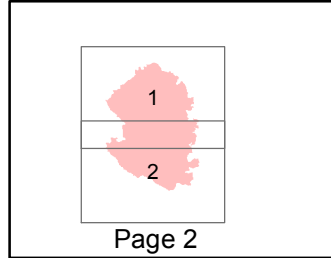
Stuart Creek 2
 AK-MID-000280
 IAP Map
 NAD 1983
 07/09/2013
 Day Shift
 Approx: 82,274 ac
 Perimeter as of: 07/08/13
 1400hrs



- Division
- Branch
- Repeater
- Camp
- Drop Point
- Fire Origin
- Helibase
- Helispot
- Lookout
- Mobile Weather Unit
- Staging Area
- Water Source
- Uncontrolled Fire Edge
- Completed Dozer Line
- Completed Line
- Hand Line
- Proposed Dozer Line
- Miscellaneous Structures
- Known Sites
- Native Allotments
- Airfield Areas (Military)
- Eielson Air Force Base
- Chena River Research Site
- Yukon Training Area
- Impact Area - Stay on Roads
- Restricted Area
- DET 460
- Tanana Flats

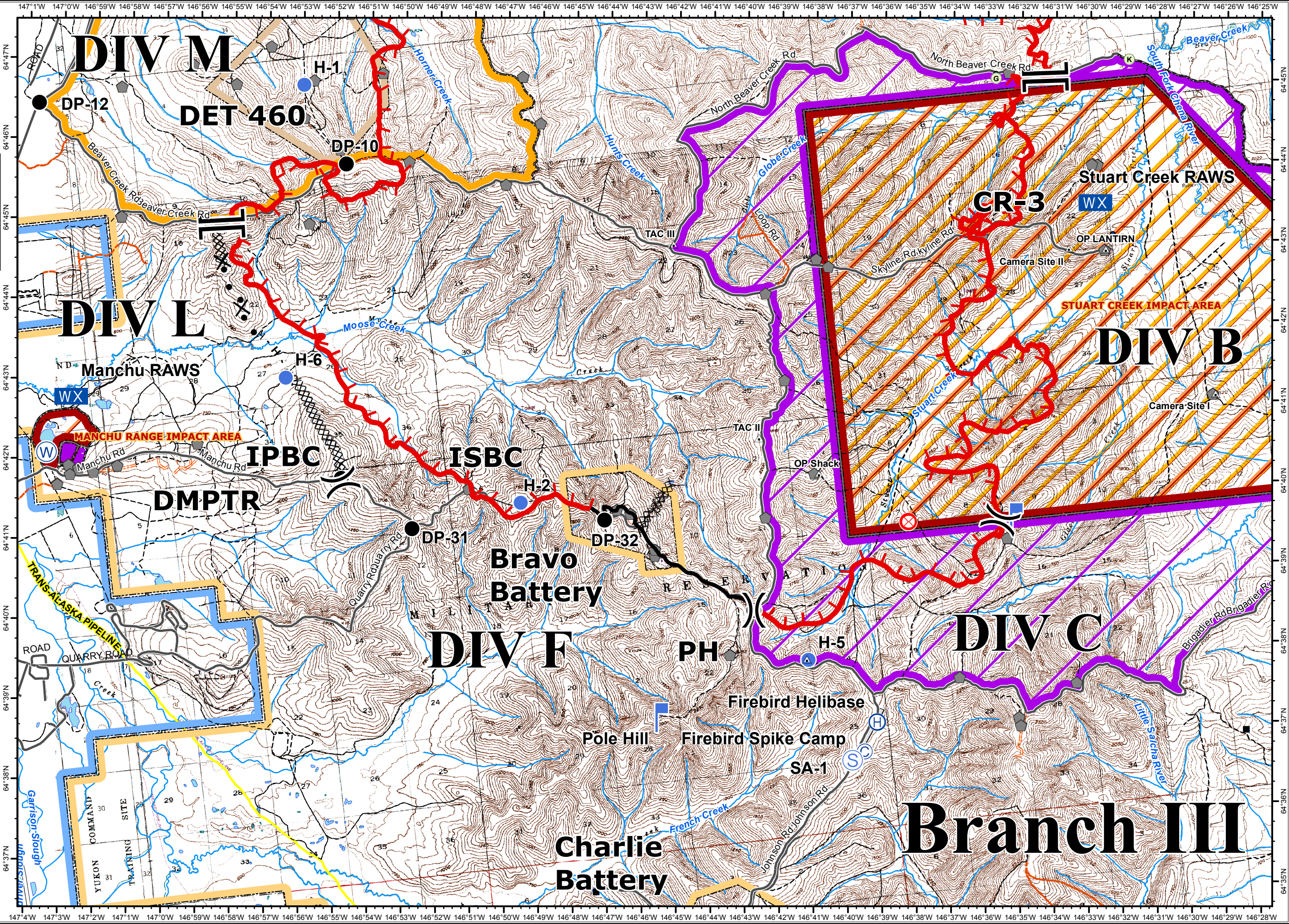
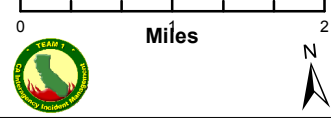


Stuart Creek 2
AK-MID-000280
IAP Map
NAD 1983
07/09/2013
Day Shift
Approx: 82,274 ac
Perimeter as of: 07/08/13
1400hrs



)(Division
][Branch

- Repeater
- Camp
- Drop Point
- Fire Origin
- Helibase
- Helispot
- Lookout
- Mobile Weather Unit
- Staging Area
- Water Source
- Uncontrolled Fire Edge
- Completed Dozer Line
- Completed Line
- Hand Line
- Proposed Dozer Line
- Miscellaneous Structures
- Known Sites
- Native Allotments
- Airfield Areas (Military)
- Eielson Air Force Base
- Chena River Research Site
- Yukon Training Area
- Impact Area - Stay on Roads
- Restricted Area
- DET 460
- Tanana Flats



Branch III