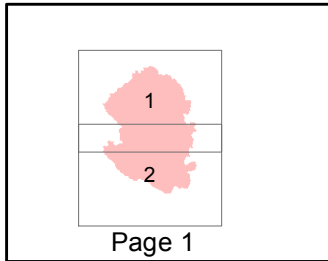


Stuart Creek 2
 AK-MID-000280
 IAP Map
 NAD 1983
 07/10/2013
 Day Shift
 Approx: 84,275 ac
 Perimeter as of: 07/09/13
 1100hrs



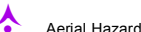
Page 1



Division



Branch



Aerial Hazard



Repeater



Camp



Drop Point



Fire Origin



Helibase



Helispot



Lookout



Mobile Weather Unit



Staging Area



Water Source



Uncontrolled Fire Edge



Completed Dozer Line



Completed Line



Hand Line



Native Allotments



Known Sites



Miscellaneous Structures



Airfield Areas (Military)



Military Obsv Point



Eielson Air Force Base



Chena River Research Site



Yukon Training Area



Impact Area - Stay on Roads



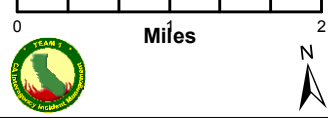
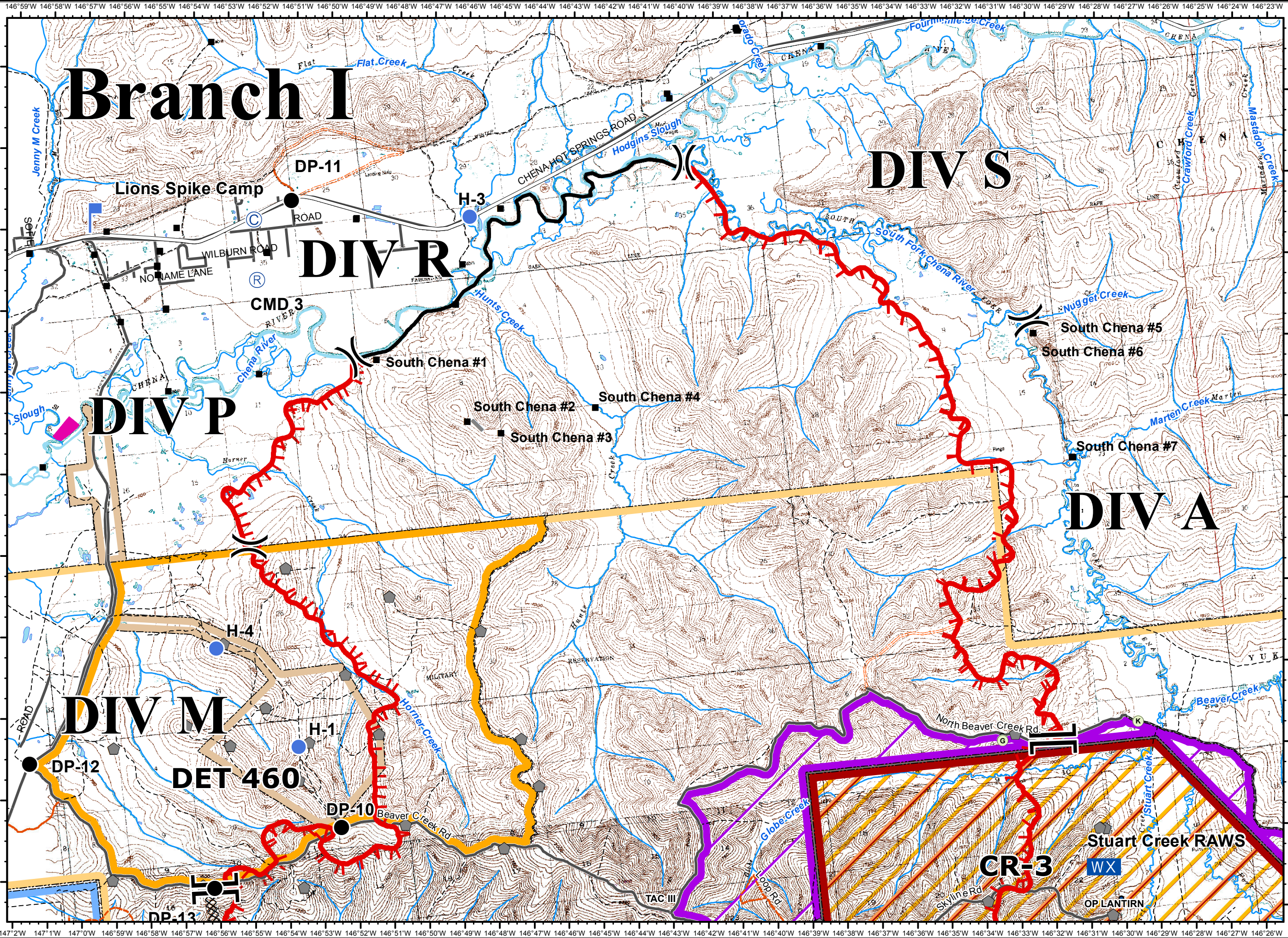
Restricted Area



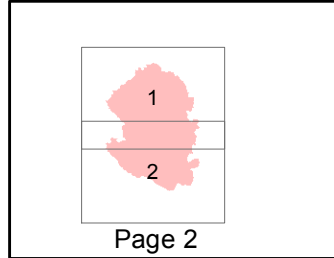
DET 460



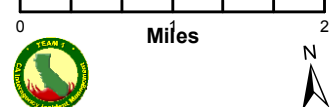
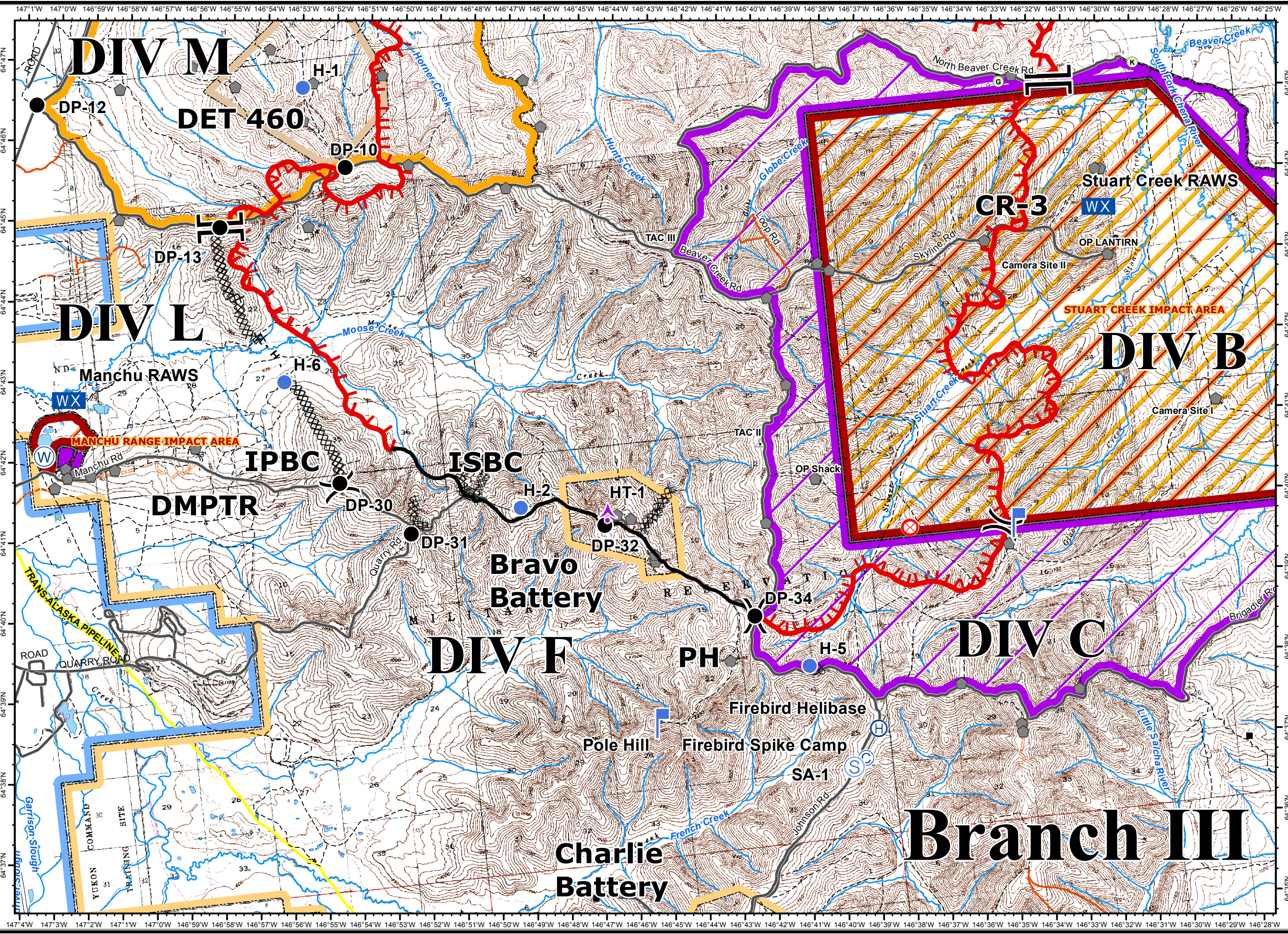
Tanana Flats



Stuart Creek 2
AK-MID-000280
IAP Map
NAD 1983
07/10/2013
Day Shift
Approx: 84,275 ac
Perimeter as of: 07/09/13
1100hrs



- Division
- Branch
- Aerial Hazard
- Repeater
- Camp
- Drop Point
- Fire Origin
- Helibase
- Helispot
- Lookout
- Mobile Weather Unit
- Staging Area
- Water Source
- Uncontrolled Fire Edge
- Completed Dozer Line
- Completed Line
- Hand Line
- Native Allotments
- Known Sites
- Miscellaneous Structures
- Airfield Areas (Military)
- Military Obsv Point
- Eielson Air Force Base
- Chena River Research Site
- Yukon Training Area
- Impact Area - Stay on Roads
- Restricted Area
- DET 460
- Tanana Flats



Branch III