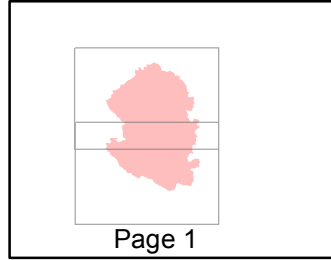
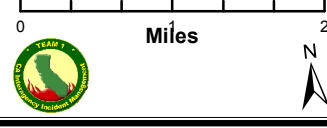
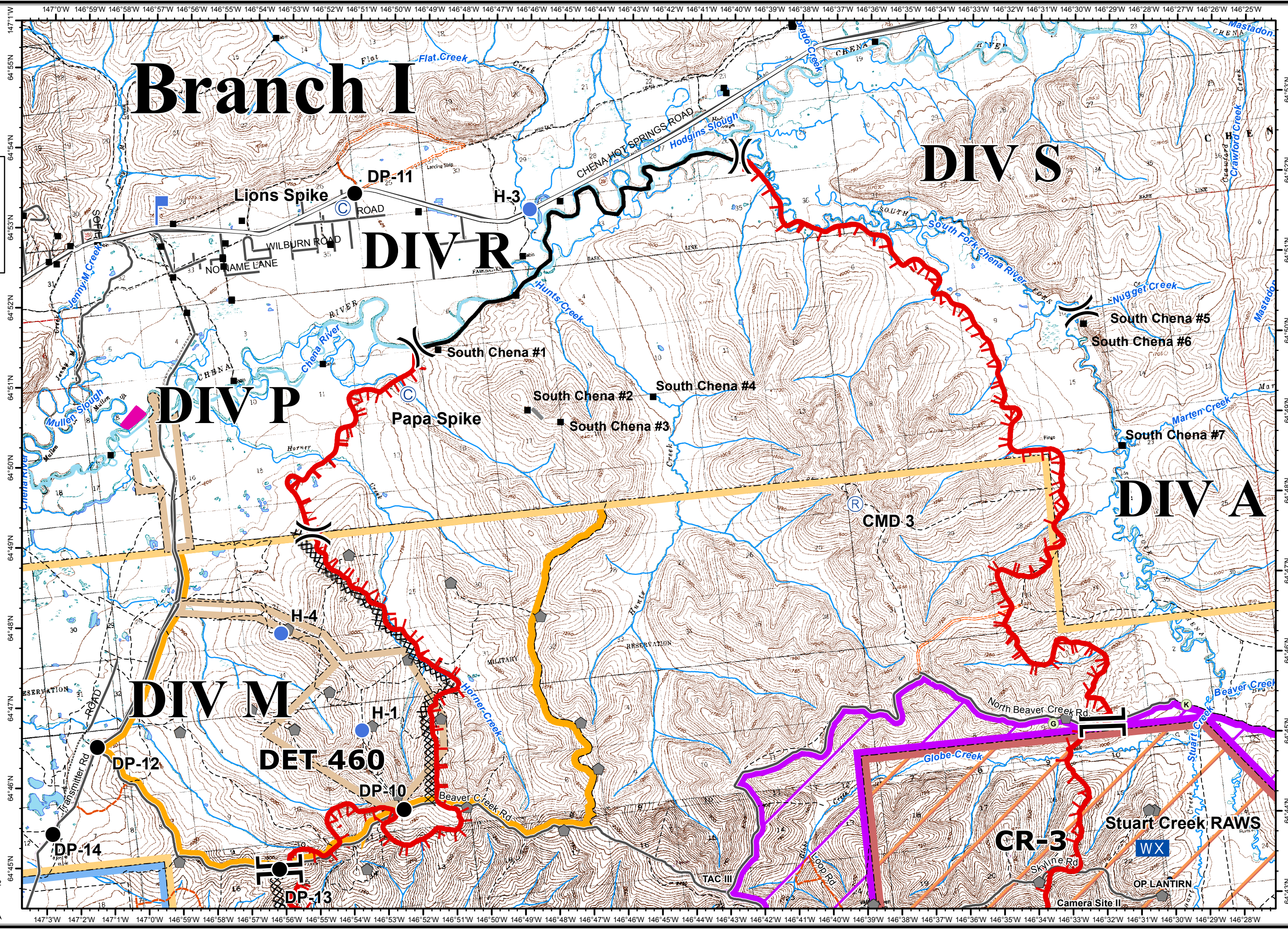


Stuart Creek 2
 AK-MID-000280
 IAP Map
 NAD 1983
 07/11/2013
 Day Shift
 Approx: 84,275 ac
 Perimeter as of: 07/09/13
 1100hrs



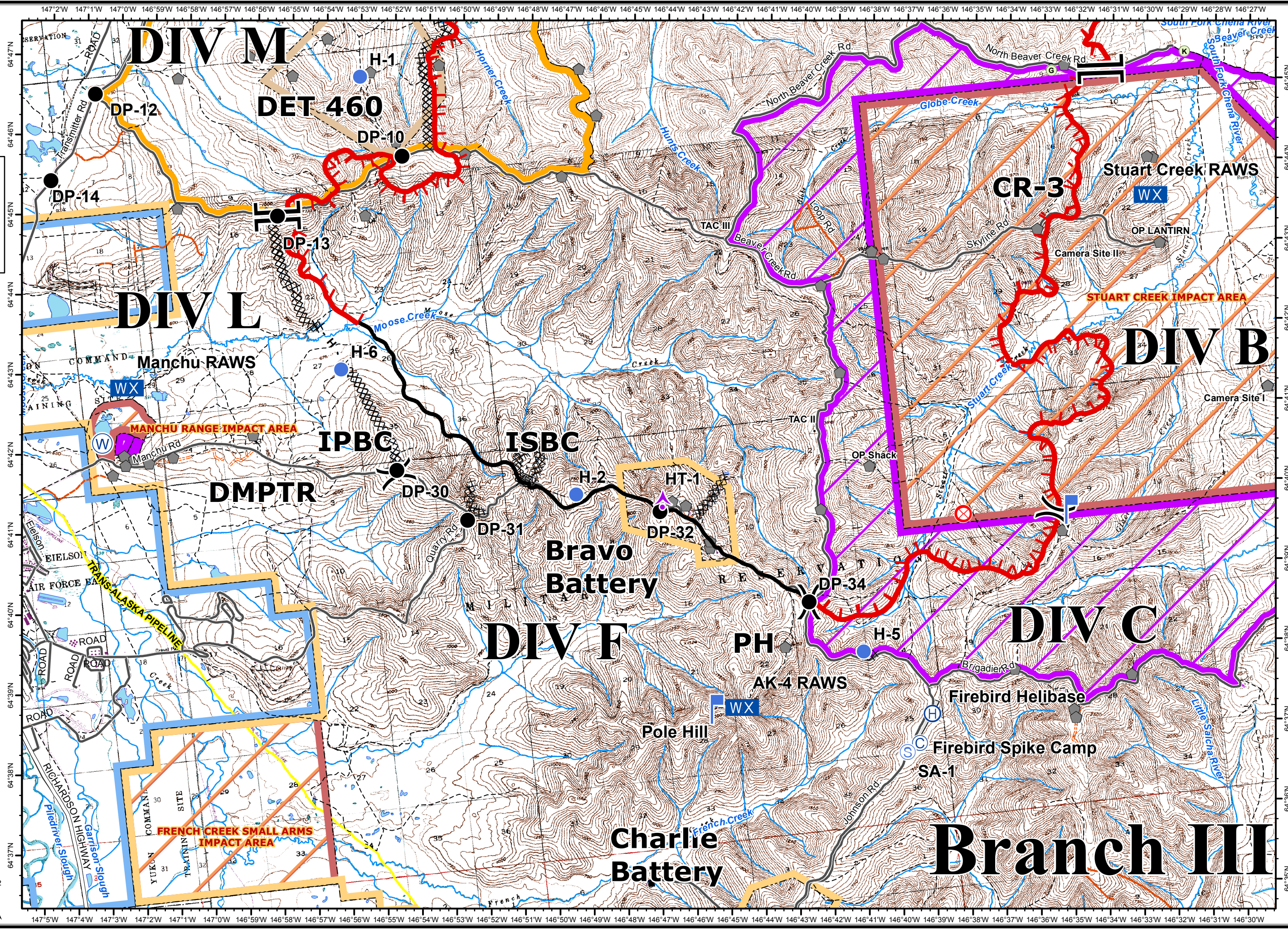
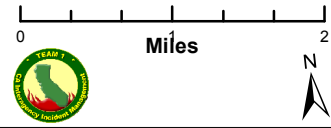
- (X) Division
- [] Branch
- ⚡ Aerial Hazard
- Ⓡ Repeater
- Ⓢ Camp
- Drop Point
- ⊗ Fire Origin
- Ⓜ Helibase
- Ⓜ Helispot
- 🔍 Lookout
- WX Mobile Weather Unit
- Ⓢ Staging Area
- Ⓜ Water Source
- 🔴 Uncontrolled Fire Edge
- XXXX Completed Dozer Line
- Completed Line
- H - Hand Line
- 🏠 Native Allotments
- Known Sites
- ⬢ Miscellaneous Structures
- ◇ Airfield Areas (Military)
- Installation_Areas_Final**
- U.S. Air Force**
- Ⓜ Eielson Air Force Base
- Ⓜ Chena River Research Site
- U.S. Army Fort Wainwright**
- Ⓜ Yukon Training Area
- Ⓜ Impact Area - Stay on Roads
- 🟡 Restricted Area
- 🟠 DET 460
- 🟢 Husky Drop Zone
- 🟢 Tanana Flats
- Ⓜ Military Obsv Point



Stuart Creek 2
AK-MID-000280
IAP Map
NAD 1983
07/11/2013
Day Shift
Approx: 84,275 ac
Perimeter as of: 07/09/13
1100hrs



- (X) Division
- [] Branch
- ⚡ Aerial Hazard
- Ⓡ Repeater
- Ⓢ Camp
- Drop Point
- ⊗ Fire Origin
- Ⓜ Helibase
- Ⓜ Helispot
- 🔍 Lookout
- WX Mobile Weather Unit
- Ⓢ Staging Area
- Ⓜ Water Source
- 🔴 Uncontrolled Fire Edge
- XXXX Completed Dozer Line
- Completed Line
- H - Hand Line
- 🏠 Native Allotments
- Known Sites
- 🏠 Miscellaneous Structures
- ◇ Airfield Areas (Military)
- Installation_Areas_Final**
- U.S. Air Force**
- 🏠 Eielson Air Force Base
- 🏠 Chena River Research Site
- U.S. Army Fort Wainwright**
- 🏠 Yukon Training Area
- 🏠 Impact Area - Stay on Roads
- 🏠 Restricted Area
- 🏠 DET 460
- 🏠 Husky Drop Zone
- 🏠 Tanana Flats
- 🏠 Military Obsv Point



147°5'W 147°4'W 147°3'W 147°2'W 147°1'W 147°0'W 146°59'W 146°58'W 146°57'W 146°56'W 146°55'W 146°54'W 146°53'W 146°52'W 146°51'W 146°50'W 146°49'W 146°48'W 146°47'W 146°46'W 146°45'W 146°44'W 146°43'W 146°42'W 146°41'W 146°40'W 146°39'W 146°38'W 146°37'W 146°36'W 146°35'W 146°34'W 146°33'W 146°32'W 146°31'W 146°30'W 146°29'W 146°28'W 146°27'W