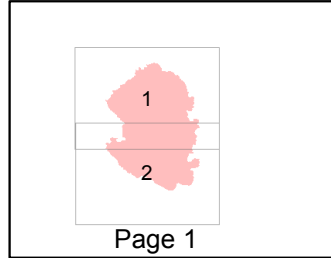
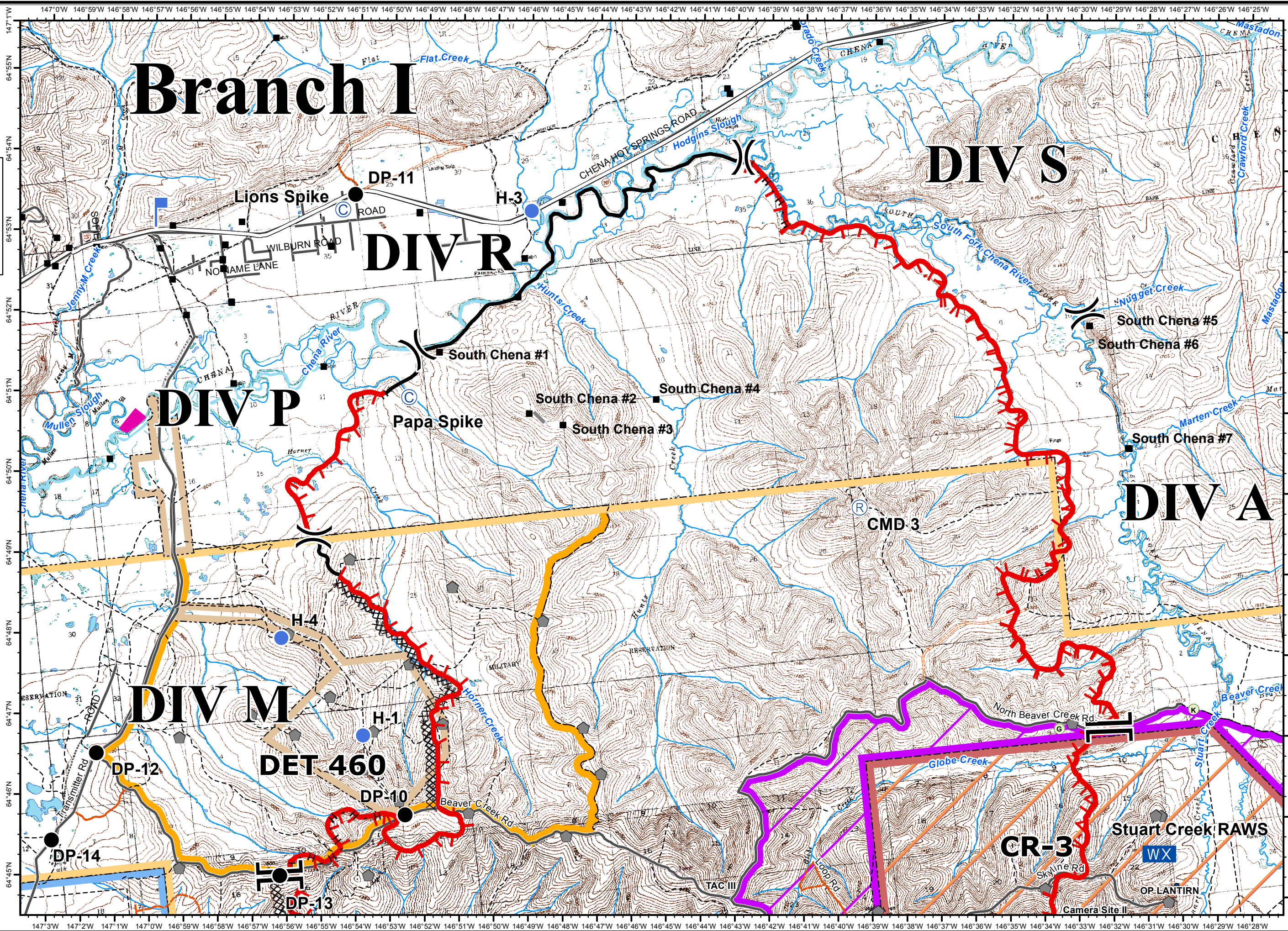
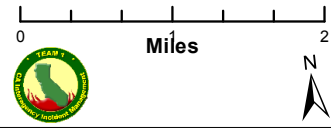


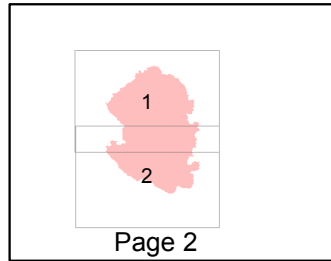
Stuart Creek 2
 AK-MID-000280
 IAP Map
 NAD 1983
 07/12/2013
 Day Shift
 Approx: 84,275 ac
 Perimeter as of: 07/09/13
 1100hrs



- () Division
- [] Branch
- ▲ Aerial Hazard
- Ⓡ Repeater
- Ⓢ Camp
- Drop Point
- ⊗ Fire Origin
- Ⓜ Helibase
- Helispot
- Ⓛ Lookout
- WX Mobile Weather Unit
- Ⓢ Staging Area
- Ⓜ Water Source
- Uncontrolled Fire Edge
- XXXX Completed Dozer Line
- Completed Line
- H - Hand Line
- Native Allotments
- Known Sites
- Miscellaneous Structures
- ▲ Military Obsv Point
- ◇ Airfield Areas (Military)
- U.S. Air Force**
- Eielson Air Force Base
- Chena River Research Site
- U.S. Army Fort Wainwright**
- Yukon Training Area
- Impact Area - Stay on Roads
- Restricted Area
- DET 460
- Husky Drop Zone

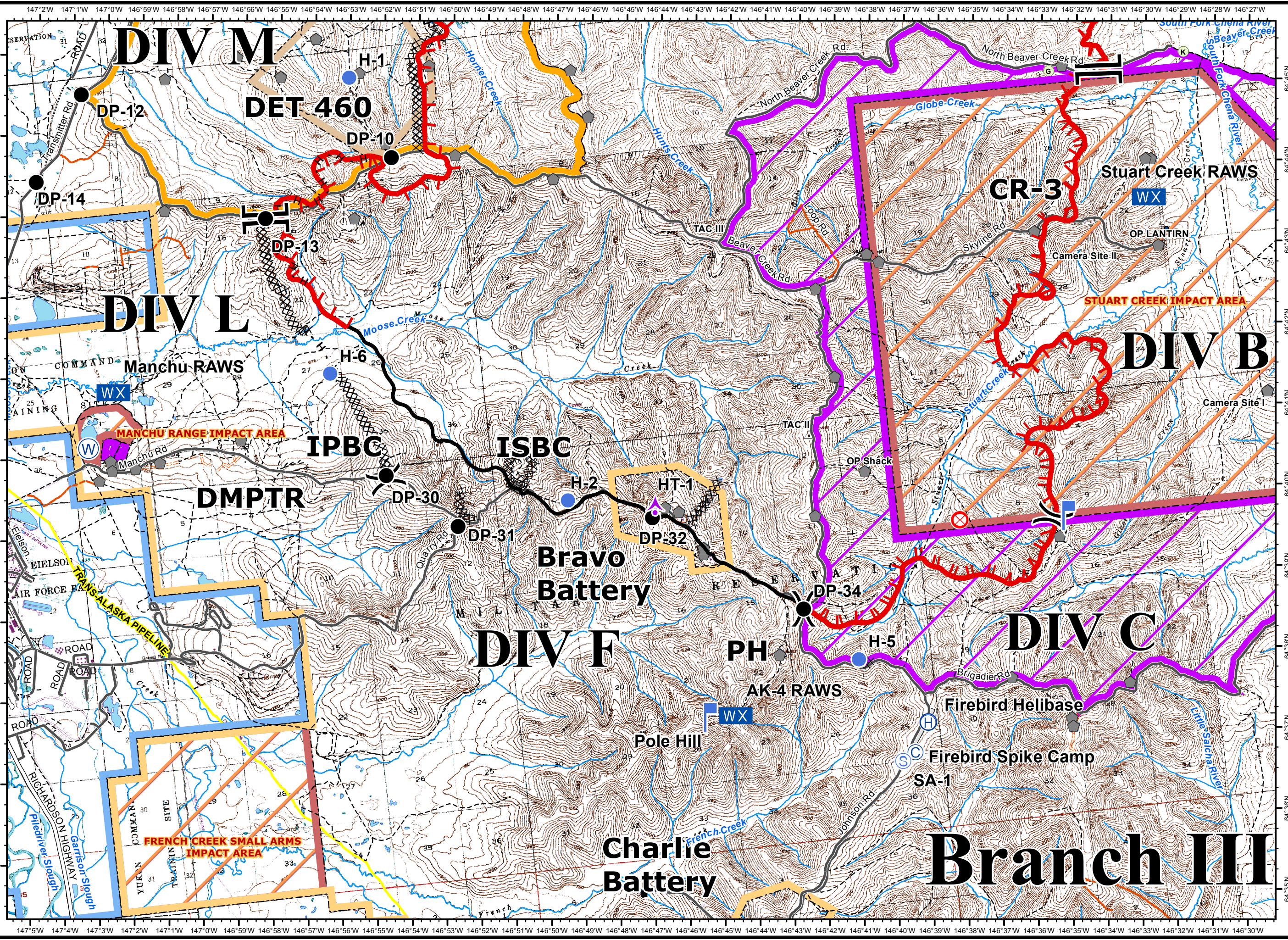
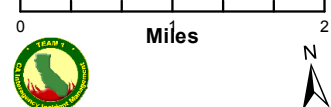


Stuart Creek 2
AK-MID-000280
IAP Map
NAD 1983
07/12/2013
Day Shift
Approx: 84,275 ac
Perimeter as of: 07/09/13
1100hrs



- Division
- Branch
- Aerial Hazard
- Repeater
- Camp
- Drop Point
- Fire Origin
- Helibase
- Helispot
- Lookout
- Mobile Weather Unit
- Staging Area
- Water Source
- Uncontrolled Fire Edge
- Completed Dozer Line
- Completed Line
- Hand Line
- Native Allotments
- Known Sites
- Miscellaneous Structures
- Military Obsv Point
- Airfield Areas (Military)

- U.S. Air Force**
- Eielson Air Force Base
- Chena River Research Site
- U.S. Army Fort Wainwright**
- Yukon Training Area
- Impact Area - Stay on Roads
- Restricted Area
- DET 460
- Husky Drop Zone



Branch III