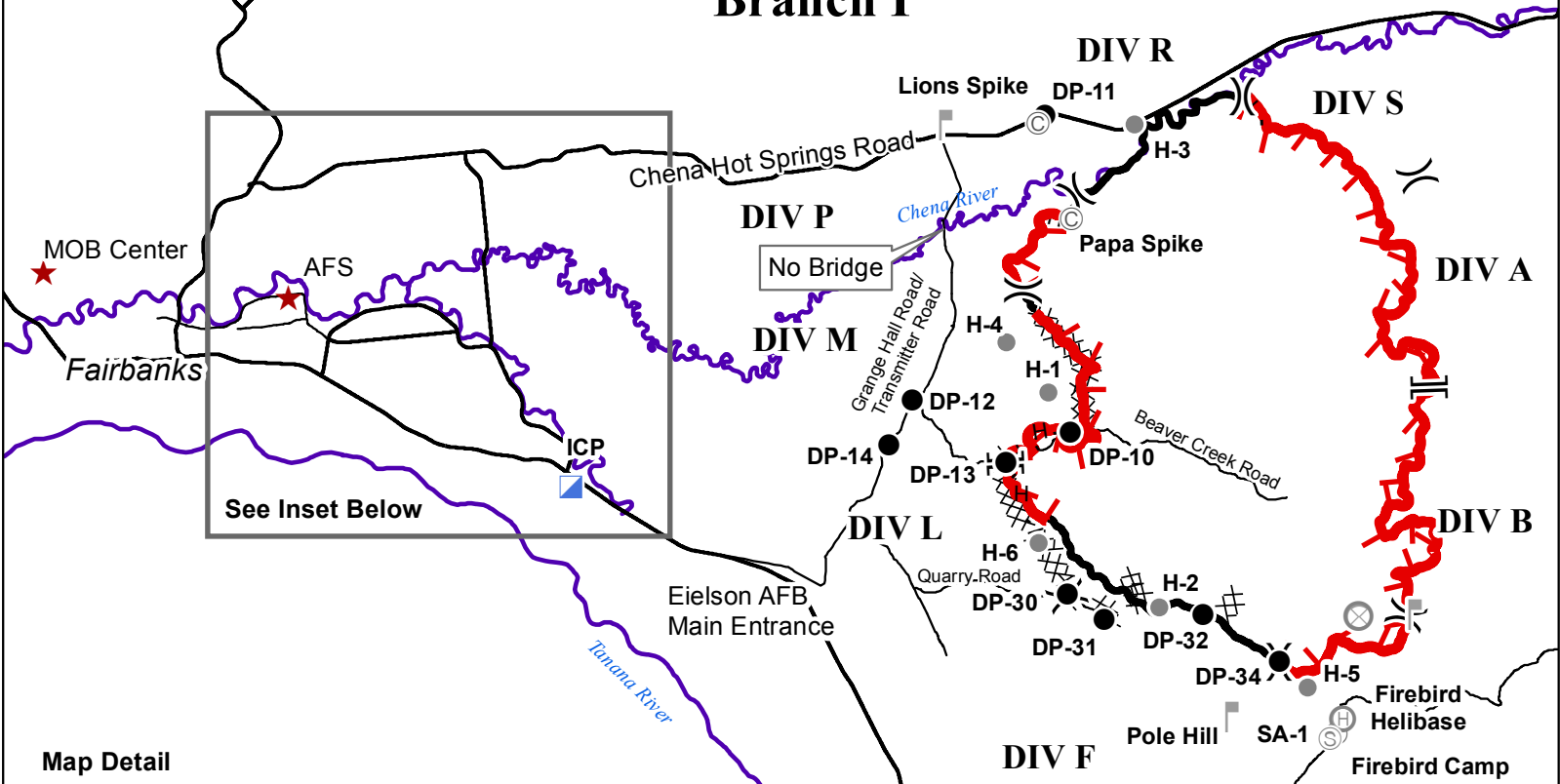
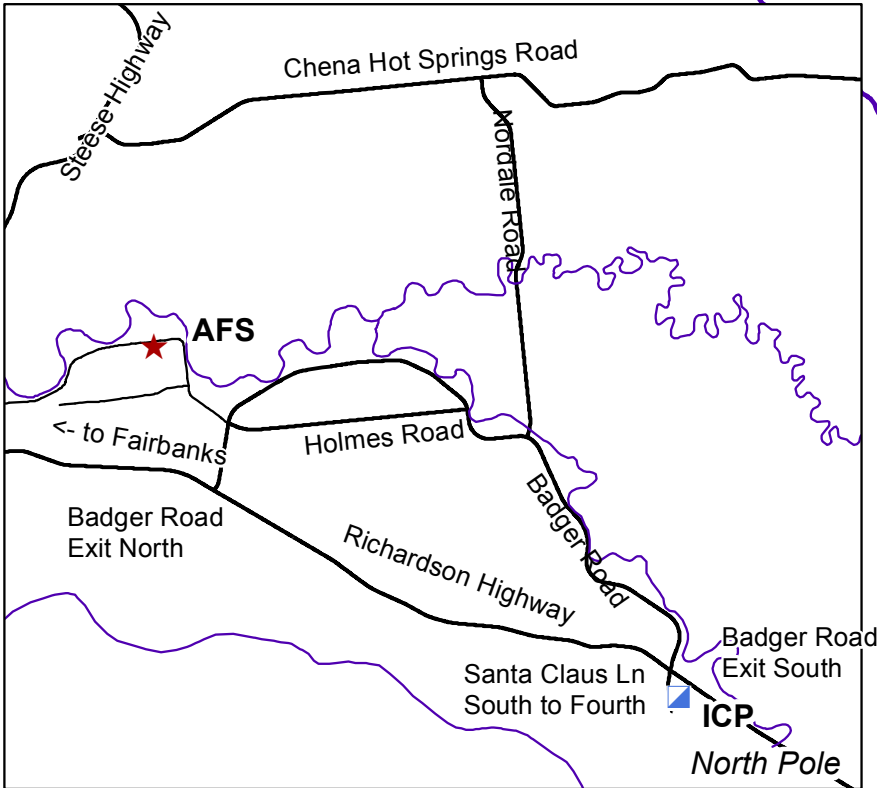


**Stuart Creek 2**  
**AK-MID-000280**  
**Transportation Map**  
 7/12/2013 Day Shift  
 Approx 84,275 acres  
 Perimeter as of 7/9/2013 1100 hrs  
 NAD 83 Alaska Albers

## Branch I



### Map Detail



To ICP: Take Badger South/Santa Claus Lane exit and drive south through rotaries to Fourth Avenue. North Pole Elementary School is at corner of Fourth and Snowman.

To Chena Hot Springs Road: Take Badger Road to Nordale, and follow Nordale north to Chena Hot Springs Road.

## Branch III

