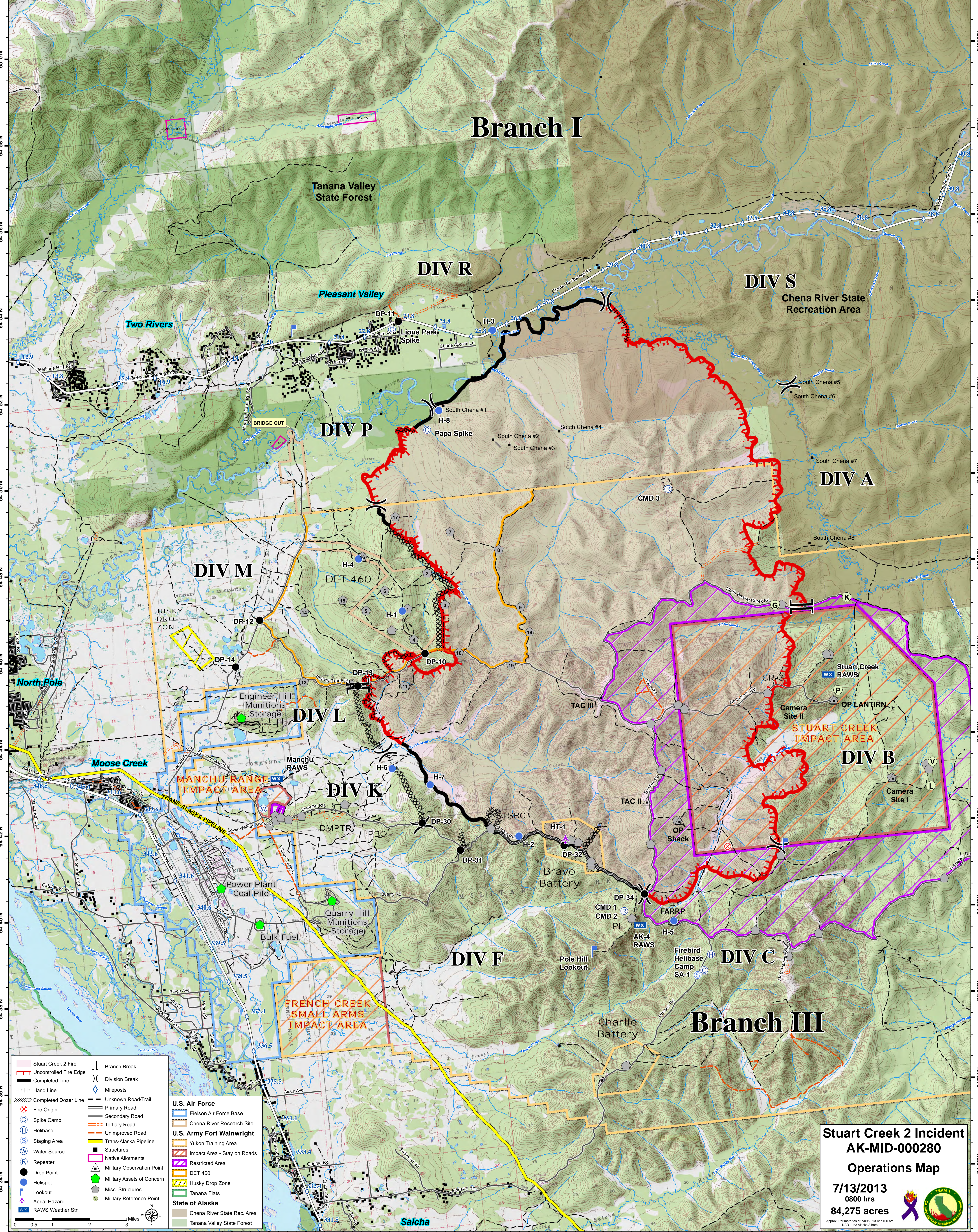


147°10'W 147°8'W 147°6'W 147°4'W 147°2'W 147°0'W 146°58'W 146°56'W 146°54'W 146°52'W 146°50'W 146°48'W 146°46'W 146°44'W 146°42'W 146°40'W 146°38'W 146°36'W 146°34'W 146°32'W 146°30'W 146°28'W 146°26'W 146°24'W 146°22'W 146°20'W



Branch I

DIV R

DIV S

DIV P

DIV A

DIV M

DIV L

DIV K

DIV F

DIV C

DIV B

Branch III

- Stuart Creek 2 Fire
- Uncontrolled Fire Edge
- Completed Line
- Hand Line
- Completed Dozer Line
- Fire Origin
- Spike Camp
- Helibase
- Staging Area
- Water Source
- Repeater
- Drop Point
- Helispot
- Lookout
- Aerial Hazard
- RAWs Weather Stn
- Branch Break
- Division Break
- Mileposts
- Unknown Road/Trail
- Primary Road
- Secondary Road
- Tertiary Road
- Unimproved Road
- Trans-Alaska Pipeline
- Structures
- Native Allotments
- Military Observation Point
- Military Assets of Concern
- Misc. Structures
- Military Reference Point

- U.S. Air Force**
 - Eielson Air Force Base
 - Chena River Research Site
 - Yukon Training Area
 - Impact Area - Stay on Roads
 - Restricted Area
 - DET 460
 - Husky Drop Zone
 - Tanana Flats
- U.S. Army Fort Wainwright**
 - Impact Area - Stay on Roads
 - Restricted Area
 - DET 460
 - Husky Drop Zone
 - Tanana Flats
- State of Alaska**
 - Chena River State Rec. Area
 - Tanana Valley State Forest

Stuart Creek 2 Incident
AK-MID-00280
Operations Map
 7/13/2013
 0800 hrs
 84,275 acres

147°18'W 147°16'W 147°14'W 147°12'W 147°10'W 147°8'W 147°6'W 147°4'W 147°2'W 147°0'W 146°58'W 146°56'W 146°54'W 146°52'W 146°50'W 146°48'W 146°46'W 146°44'W 146°42'W 146°40'W 146°38'W 146°36'W 146°34'W 146°32'W 146°30'W 146°28'W