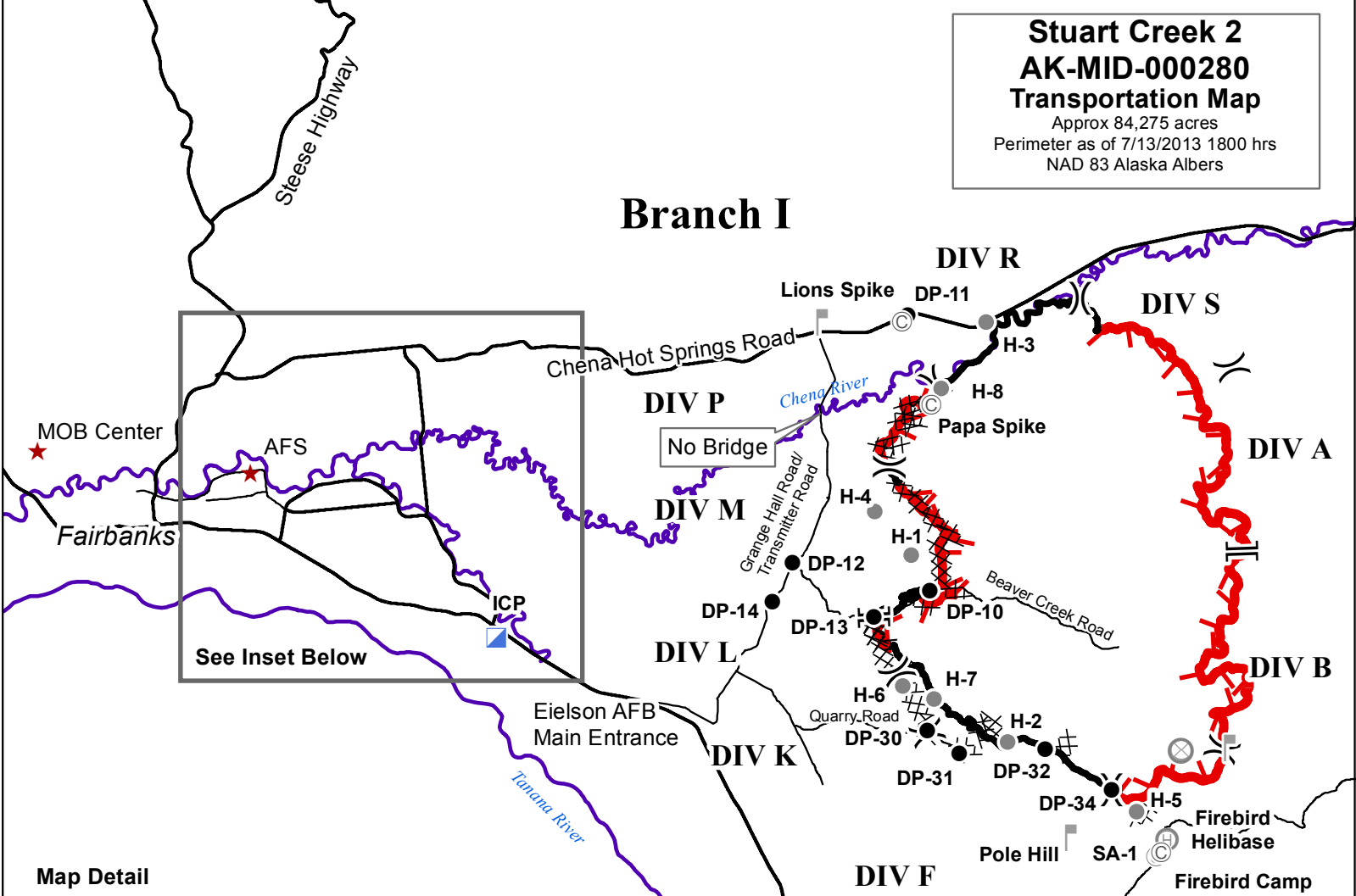


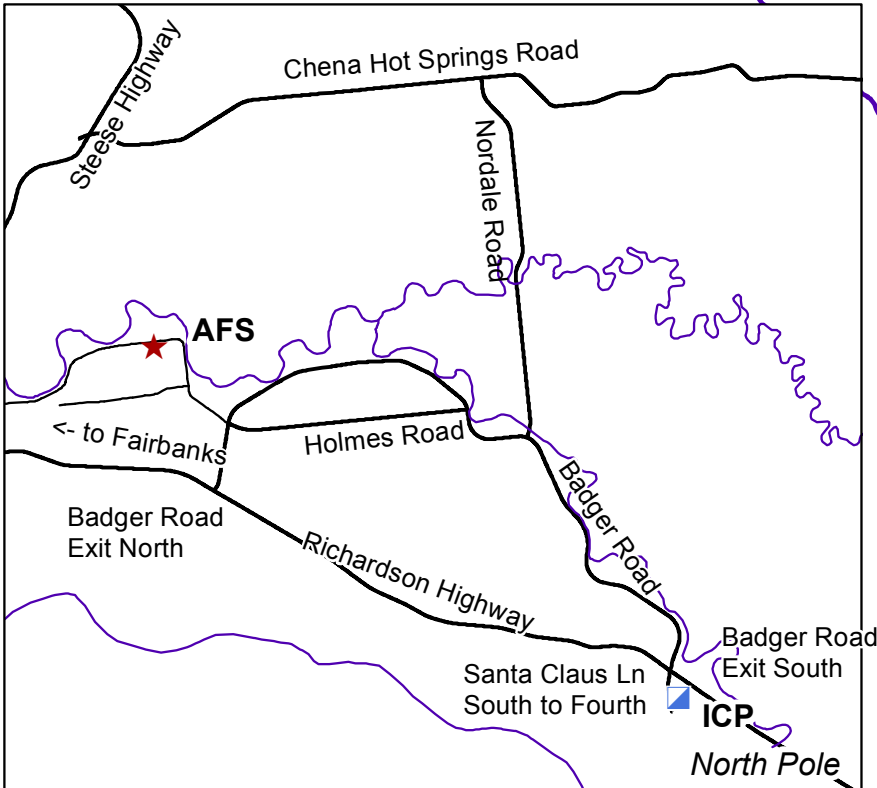
**Stuart Creek 2
AK-MID-000280
Transportation Map**

Approx 84,275 acres
Perimeter as of 7/13/2013 1800 hrs
NAD 83 Alaska Albers

Branch I



Map Detail



To ICP: Take Badger South/Santa Claus Lane exit and drive south through rotaries to Fourth Avenue. North Pole Elementary School is at corner of Fourth and Snowman.

To Chena Hot Springs Road: Take Badger Road to Nordale, and follow Nordale north to Chena Hot Springs Road.

