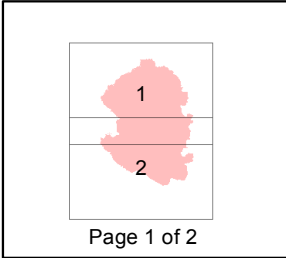
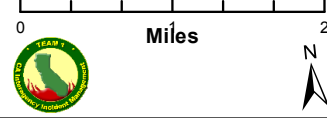
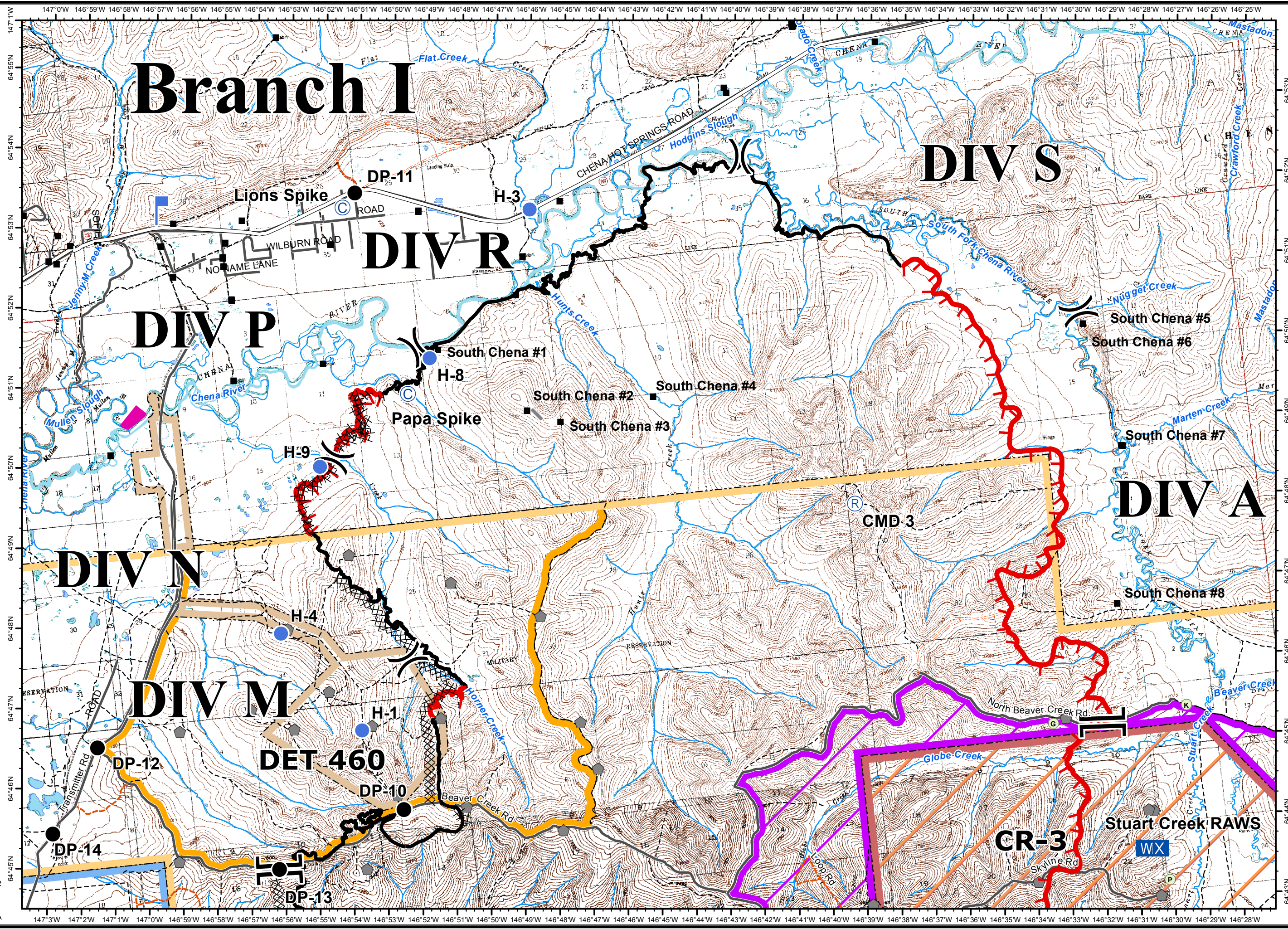


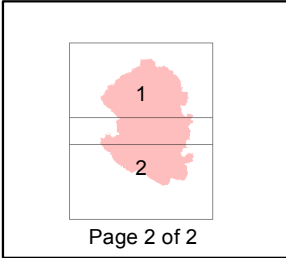
Stuart Creek 2
 AK-MID-000280
 IAP Map
 NAD 1983
 07/15/2013
 Day Shift
 Approx: 85,475 ac
 Perimeter as of: 07/14/13
 2000hrs



- () Division
- [] Branch
- ⚡ Aerial Hazard
- Ⓡ Repeater
- Ⓢ Camp
- Drop Point
- ⊗ Fire Origin
- Ⓜ Helibase
- Ⓟ Helispot
- 🔍 Lookout
- WX Mobile Weather Unit
- Ⓢ Staging Area
- Ⓜ Water Source
- 🔴 Uncontrolled Fire Edge
- XXXX Completed Dozer Line
- Completed Line
- H - Hand Line
- 🏠 Native Allotments
- Known Sites
- ⬛ Miscellaneous Structures
- ⚠ Military Obsv Point
- ◊ Airfield Areas (Military)
- U.S. Air Force**
- ✈ Eielson Air Force Base
- 🏠 Chena River Research Site
- U.S. Army Fort Wainwright**
- 🏠 Yukon Training Area
- 🚧 Impact Area - Stay on Roads
- 🚫 Restricted Area
- 🚧 DET 460
- 🚧 Husky Drop Zone



Stuart Creek 2
AK-MID-000280
IAP Map
NAD 1983
07/15/2013
Day Shift
Approx: 85,475 ac
Perimeter as of: 07/14/13
2000hrs



- () Division
- [] Branch
- ⚡ Aerial Hazard
- Ⓡ Repeater
- Ⓢ Camp
- Drop Point
- ⊗ Fire Origin
- Ⓜ Helibase
- Ⓜ Helispot
- 🔍 Lookout
- WX Mobile Weather Unit
- Ⓢ Staging Area
- Ⓜ Water Source
- 🔴 Uncontrolled Fire Edge
- XXXX Completed Dozer Line
- Completed Line
- H - Hand Line
- 🏠 Native Allotments
- Known Sites
- 🏠 Miscellaneous Structures
- 📍 Military Obsv Point
- 🛫 Airfield Areas (Military)
- U.S. Air Force**
- 🏠 Eielson Air Force Base
- 🏠 Chena River Research Site
- U.S. Army Fort Wainwright**
- 🏠 Yukon Training Area
- 🏠 Impact Area - Stay on Roads
- 🏠 Restricted Area
- 🏠 DET 460
- 🏠 Husky Drop Zone

