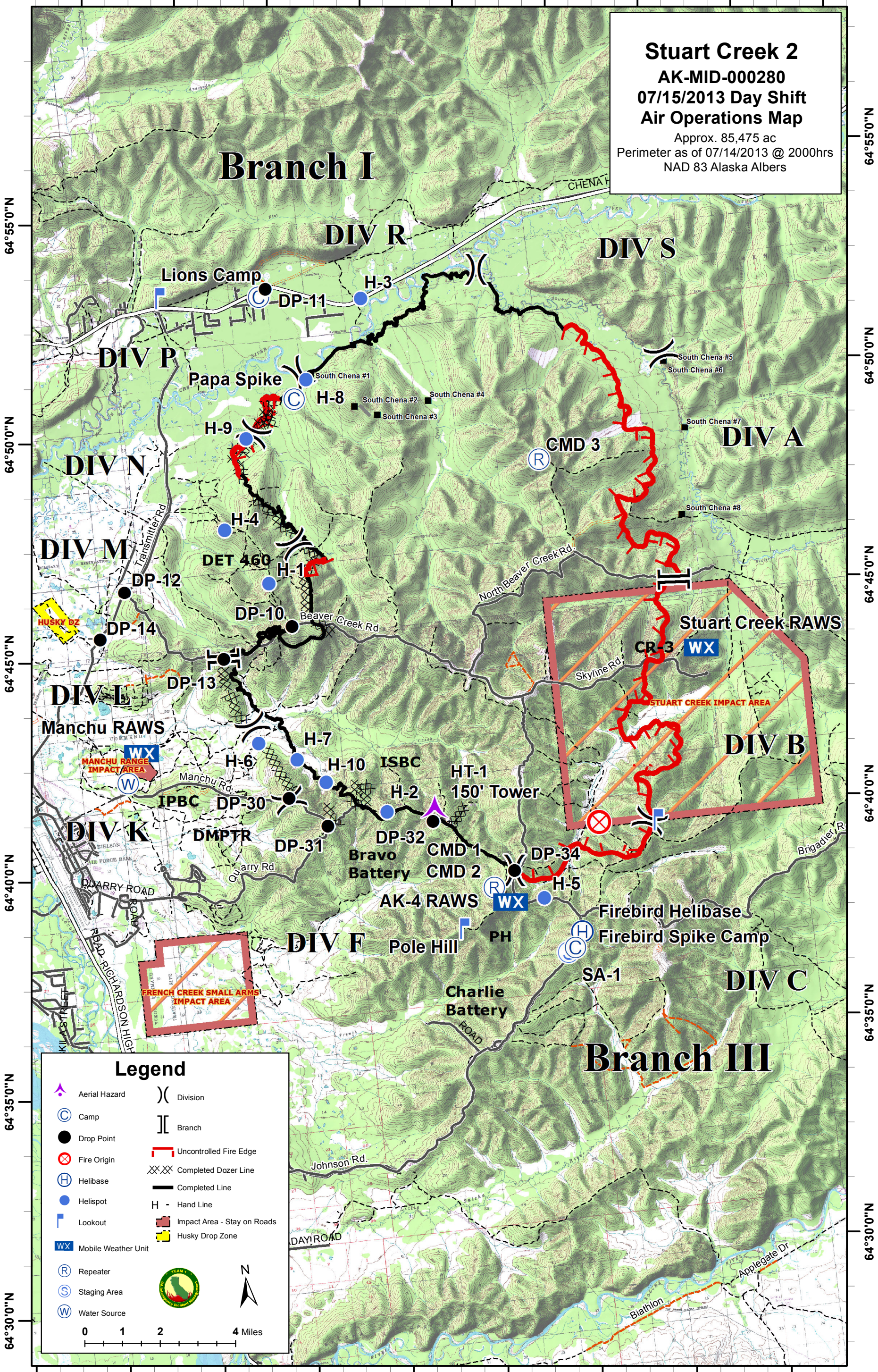


147°0'0"W 146°55'0"W 146°50'0"W 146°45'0"W 146°40'0"W 146°35'0"W 146°30'0"W 146°25'0"W 146°20'0"W

Stuart Creek 2
AK-MID-000280
07/15/2013 Day Shift
Air Operations Map
Approx. 85,475 ac
Perimeter as of 07/14/2013 @ 2000hrs
NAD 83 Alaska Albers

Branch I



Legend

	Aerial Hazard		Division
	Camp		Branch
	Drop Point		Uncontrolled Fire Edge
	Fire Origin		Completed Dozer Line
	Helibase		Completed Line
	Helispot		Hand Line
	Lookout		Impact Area - Stay on Roads
	Mobile Weather Unit		Husky Drop Zone
	Repeater		
	Staging Area		
	Water Source		

0 1 2 4 Miles

Branch III

64°55'0"N
64°50'0"N
64°45'0"N
64°40'0"N
64°35'0"N
64°30'0"N

64°55'0"N
64°50'0"N
64°45'0"N
64°40'0"N
64°35'0"N
64°30'0"N

147°10'0"W 147°5'0"W 147°0'0"W 146°55'0"W 146°50'0"W 146°45'0"W 146°40'0"W 146°35'0"W 146°30'0"W

Point	Latitude (DD MM.MMM)	Longitude (DD MM.MMM)	Notes
Fire Origin	64 40.000 N	146 37.000 W	
Aerial Hazard Ht-1	64 40.534 N	146 45.743 W	AERIAL HAZARD 150 ft tower Ht-1
Lookout	64 39.907 N	146 33.946 W	
Lookout	64 53.038 N	146 57.583 W	
Pole Hill	64 37.905 N	146 44.918 W	
Firebird Helibase	64 37.546 N	146 38.547 W	
H-1	64 46.275 N	146 53.233 W	Good for type 2 & 3 helicopters
H-2	64 40.768 N	146 48.229 W	Good for Type 1, 2, and 3 helicopters
H-3	64 52.552 N	146 46.660 W	Good for medivac & troops. Type 1, 2, & 3 helicopters
H-4	64 47.591 N	146 55.300 W	Good for medivac & troops. Type 2, & 3 helicopters
H-5	64 38.415 N	146 40.352 W	
H-6	64 42.647 N	146 54.695 W	
H-7	64 42.180 N	146 52.736 W	
H-8	64 50.831 N	146 50.074 W	
H-9	64 49.620 N	146 53.630 W	
H-10	64 41.589 N	146 51.316 W	Log Deck T2/T3
Water Source	64 42.040 N	147 01.905 W	
DP-10	64 45.231 N	146 52.250 W	
DP-11	64 52.993 N	146 51.746 W	
DP-12	64 46.412 N	147 01.031 W	
DP-13	64 44.648 N	146 56.080 W	
DP-14	64 45.388 N	147 02.600 W	
DP-30	64 41.314 N	146 53.391 W	
DP-31	64 40.593 N	146 51.481 W	
DP-32	64 40.440 N	146 45.842 W	
DP-34	64 39.111 N	146 41.783 W	
Firebird Spike Camp	64 37.195 N	146 39.011 W	
Lions Camp	64 52.809 N	146 52.895 W	
SA-1	64 37.101 N	146 39.391 W	
South Chena #2	64 49.987 N	146 47.099 W	Helitack must protect
South Chena #3	64 49.853 N	146 46.433 W	Helitack must protect