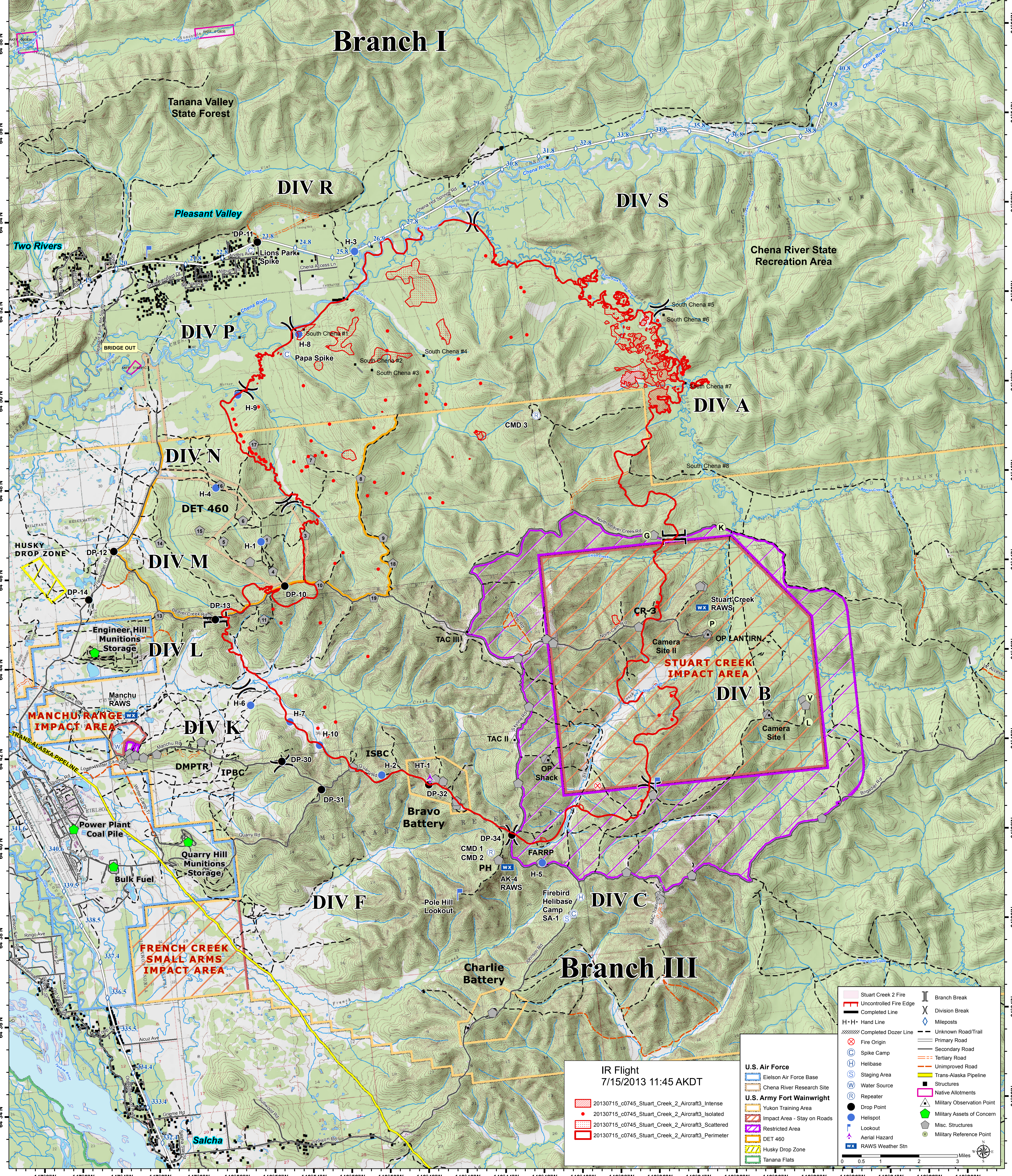


147°2'W 147°0'W 146°58'W 146°56'W 146°54'W 146°52'W 146°50'W 146°48'W 146°46'W 146°44'W 146°42'W 146°40'W 146°38'W 146°36'W 146°34'W 146°32'W 146°30'W 146°28'W 146°26'W 146°24'W 146°22'W 146°20'W 146°18'W 146°16'W 146°14'W 146°12'W

Stuart Creek 2 Incident
AK-MID-000280
IR Flight
7/15/2013
11:45 AKDT
IR 86,225 acres



Branch I



147°8'W 147°6'W 147°4'W 147°2'W 147°0'W 146°58'W 146°56'W 146°54'W 146°52'W 146°50'W 146°48'W 146°46'W 146°44'W 146°42'W 146°40'W 146°38'W 146°36'W 146°34'W 146°32'W 146°30'W 146°28'W 146°26'W 146°24'W 146°22'W 146°20'W

IR Flight
7/15/2013 11:45 AKDT

- 20130715_c0745_Stuart_Creek_2_Aircraft3_Intense
- 20130715_c0745_Stuart_Creek_2_Aircraft3_Isolated
- 20130715_c0745_Stuart_Creek_2_Aircraft3_Scattered
- 20130715_c0745_Stuart_Creek_2_Aircraft3_Perimeter

- U.S. Air Force**
- Eielson Air Force Base
 - Chena River Research Site
- U.S. Army Fort Wainwright**
- Yukon Training Area
 - Impact Area - Stay on Roads
 - Restricted Area
 - DET 460
 - Husky Drop Zone
 - Tanana Flats

- Stuart Creek 2 Fire
- Uncontrolled Fire Edge
- Completed Line
- Uncompleted Line
- Completed Dozer Line
- Fire Origin
- Spike Camp
- Helibase
- Staging Area
- Water Source
- Repeater
- Drop Point
- Helispot
- Lookout
- Aerial Hazard
- RAWs Weather Stn
- Branch Break
- Division Break
- Mileposts
- Unknown Road/Trail
- Primary Road
- Secondary Road
- Tertiary Road
- Unimproved Road
- Trans-Alaska Pipeline
- Structures
- Native Allotments
- Military Observation Point
- Military Assets of Concern
- Misc. Structures
- Military Reference Point

