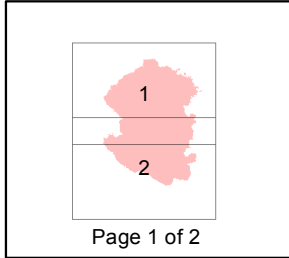
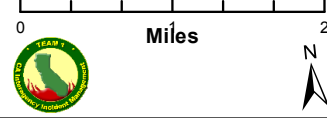
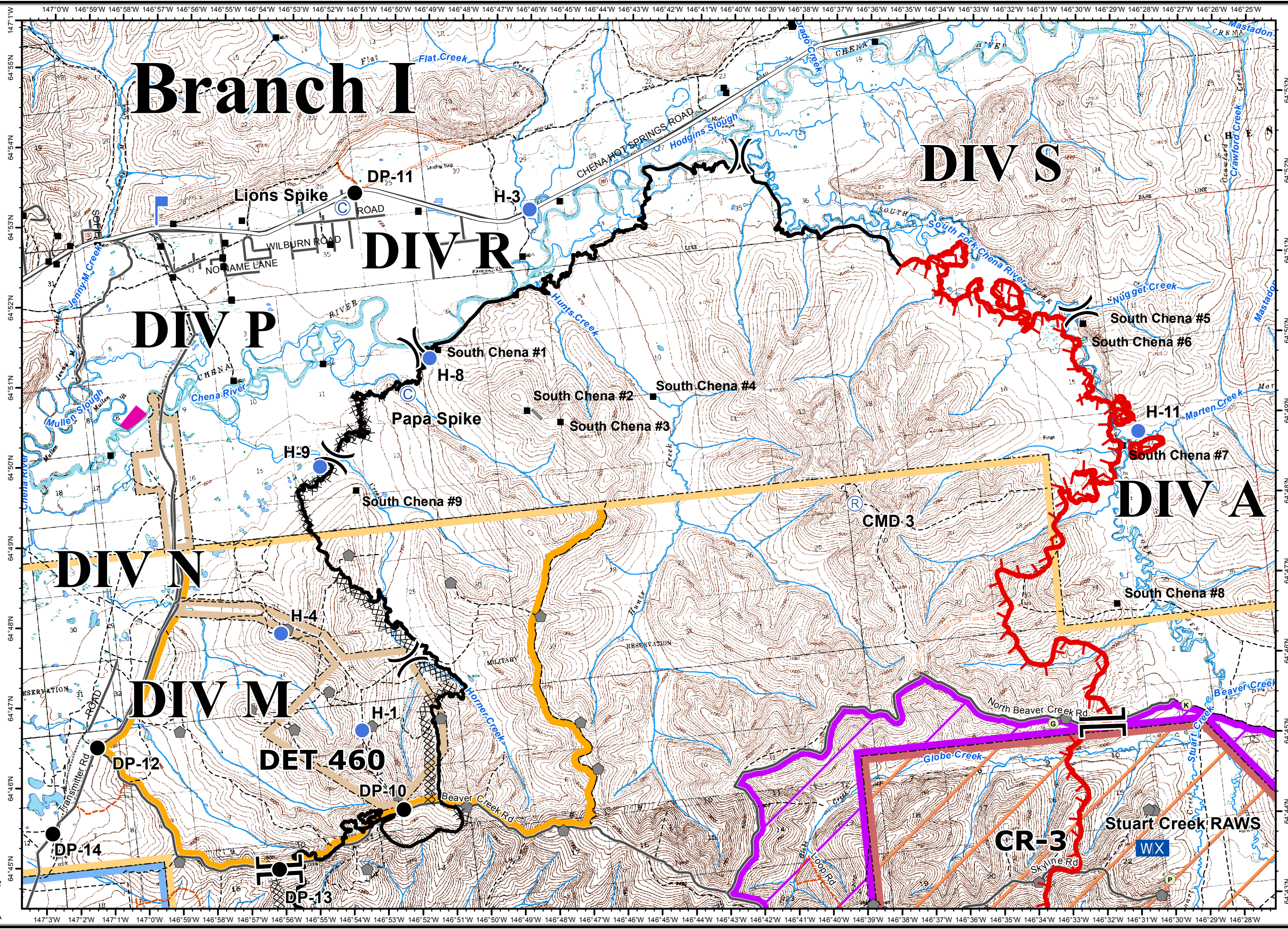


Stuart Creek 2  
 AK-MID-000280  
 IAP Map  
 NAD 1983  
 07/16/2013  
 Day Shift  
 Approx: 85,475 ac  
 Perimeter as of: 07/15/13  
 2000hrs

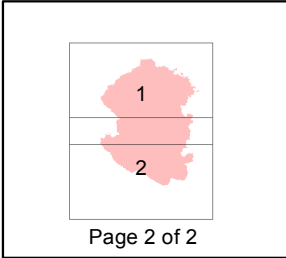


- ( ) Division
- [ ] Branch
- ⚡ Aerial Hazard
- Ⓡ Repeater
- Ⓢ Camp
- Drop Point
- ⊗ Fire Origin
- Ⓜ Helibase
- Ⓜ Helispot
- Ⓜ Lookout
- WX Mobile Weather Unit
- Ⓢ Staging Area
- Ⓜ Water Source
- Ⓜ Uncontrolled Fire Edge
- XXXX Completed Dozer Line
- Completed Line
- H - Hand Line
- Ⓜ Native Allotments
- Ⓜ Known Sites
- Ⓜ Miscellaneous Structures
- Ⓜ Military Obsv Point
- Ⓜ Airfield Areas (Military)
- U.S. Air Force**
- Ⓜ Eielson Air Force Base
- Ⓜ Chena River Research Site
- U.S. Army Fort Wainwright**
- Ⓜ Yukon Training Area
- Ⓜ Impact Area - Stay on Roads
- Ⓜ Restricted Area
- Ⓜ DET 460
- Ⓜ Husky Drop Zone





**Stuart Creek 2**  
**AK-MID-000280**  
**IAP Map**  
**NAD 1983**  
**07/16/2013**  
**Day Shift**  
**Approx: 85,475 ac**  
**Perimeter as of: 07/15/13**  
**2000hrs**



- ( ) Division
- [ ] Branch
- ⚡ Aerial Hazard
- Ⓡ Repeater
- Ⓢ Camp
- Drop Point
- ⊗ Fire Origin
- Ⓜ Helibase
- Helispot
- Ⓛ Lookout
- WX Mobile Weather Unit
- Ⓢ Staging Area
- Ⓜ Water Source
- ⚡ Uncontrolled Fire Edge
- XXXX Completed Dozer Line
- Completed Line
- H - Hand Line
- Native Allotments
- Known Sites
- Miscellaneous Structures
- ▲ Military Obsv Point
- ◇ Airfield Areas (Military)
- U.S. Air Force**
- Eielson Air Force Base
- Chena River Research Site
- U.S. Army Fort Wainwright**
- Yukon Training Area
- Impact Area - Stay on Roads
- Restricted Area
- DET 460
- Husky Drop Zone

