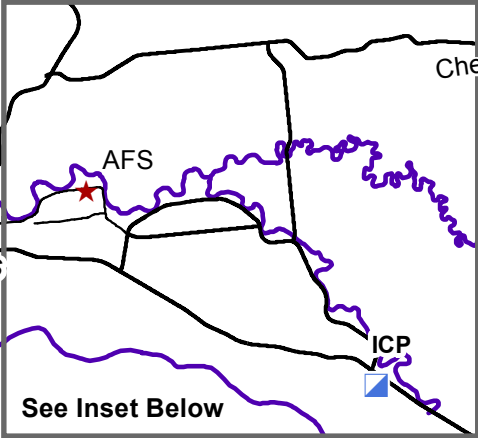
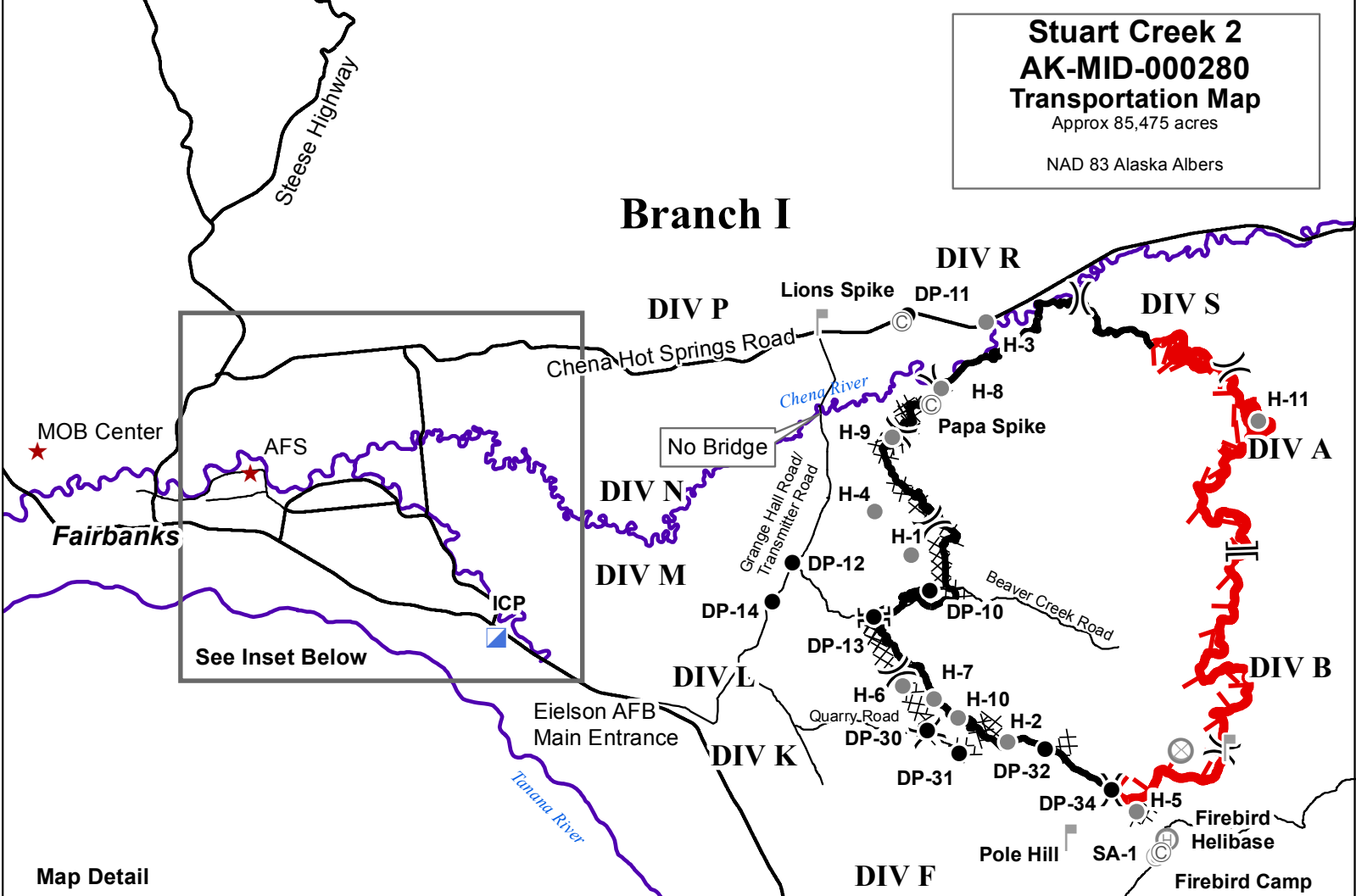


**Stuart Creek 2
AK-MID-000280
Transportation Map**

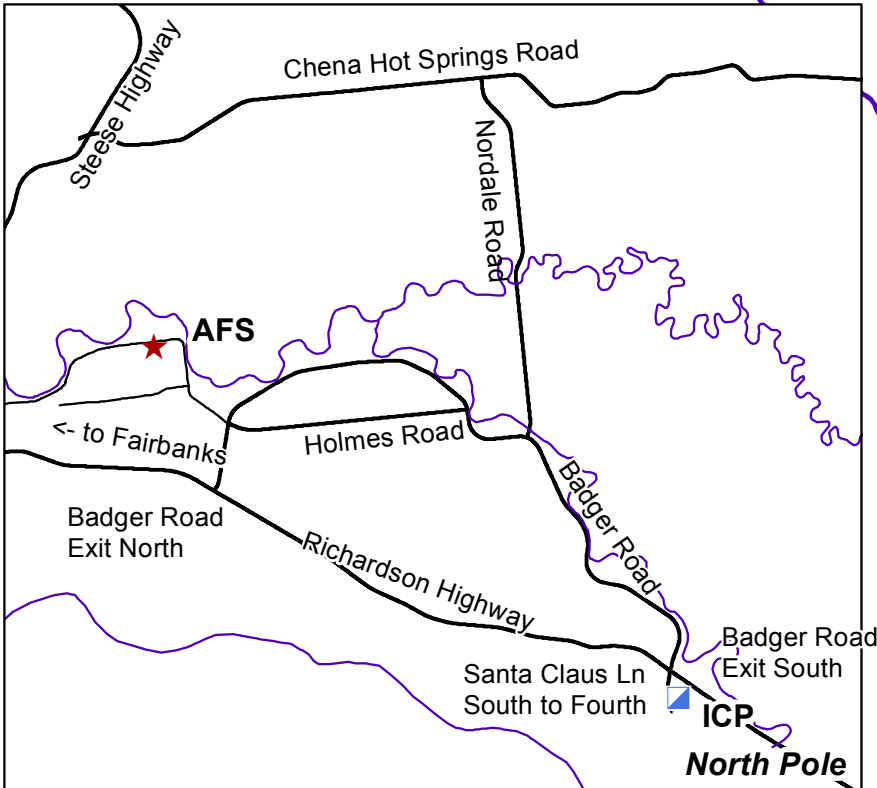
Approx 85,475 acres

NAD 83 Alaska Albers

Branch I



Map Detail



To ICP: Take Badger South/Santa Claus Lane exit and drive south through rotaries to Fourth Avenue. North Pole Elementary School is at corner of Fourth and Snowman.

To Chena Hot Springs Road: Take Badger Road to Nordale, and follow Nordale north to Chena Hot Springs Road.

