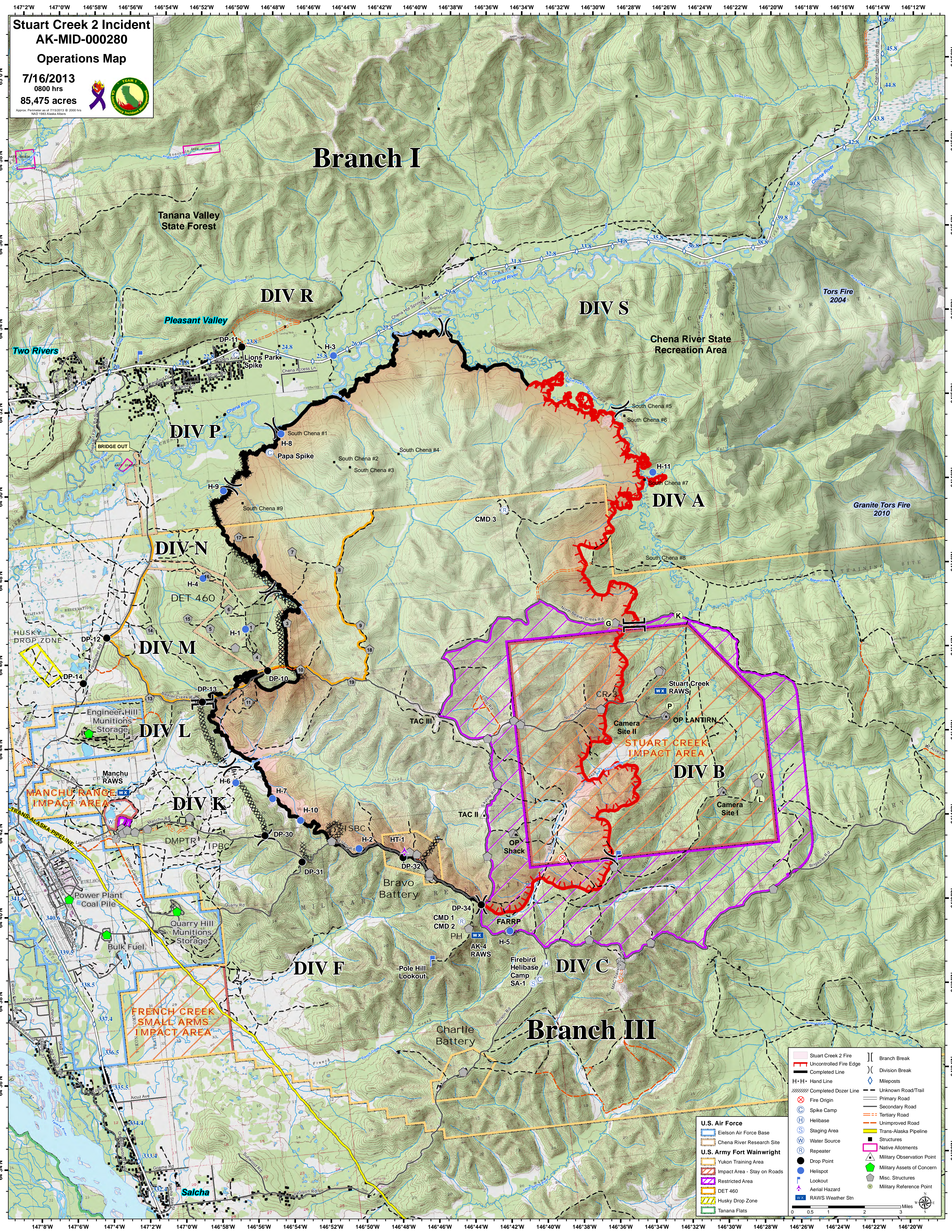


147°2'W 147°0'W 146°58'W 146°56'W 146°54'W 146°52'W 146°50'W 146°48'W 146°46'W 146°44'W 146°42'W 146°40'W 146°38'W 146°36'W 146°34'W 146°32'W 146°30'W 146°28'W 146°26'W 146°24'W 146°22'W 146°20'W 146°18'W 146°16'W 146°14'W 146°12'W

Stuart Creek 2 Incident
AK-MID-000280
Operations Map

7/16/2013
 0800 hrs
 85,475 acres

Approx. Perimeter as of 7/15/2013 @ 2000 hrs
 NAD 1983 Alaska Albers



Branch I

Branch III

Stuart Creek 2 Fire	Branch Break
Uncontrolled Fire Edge	Division Break
Completed Line	Mileposts
Completed Dozer Line	Unknown Road/Trail
Fire Origin	Primary Road
Spike Camp	Secondary Road
Helibase	Tertiary Road
Staging Area	Unimproved Road
Water Source	Trans-Alaska Pipeline
Repeater	Structures
Drop Point	Native Allotments
Impact Area - Stay on Roads	Military Observation Point
Restricted Area	Military Assets of Concern
Husky Drop Zone	Misc. Structures
Tanana Flats	Military Reference Point
RAWs Weather Stn	

0 0.5 1 2 3 Miles

147°8'W 147°6'W 147°4'W 147°2'W 147°0'W 146°58'W 146°56'W 146°54'W 146°52'W 146°50'W 146°48'W 146°46'W 146°44'W 146°42'W 146°40'W 146°38'W 146°36'W 146°34'W 146°32'W 146°30'W 146°28'W 146°26'W 146°24'W 146°22'W 146°20'W