

**Stuart Creek 2 Incident  
AK-MID-000280  
Operations Map**

**7/17/2013  
0800 hrs  
85,475 acres**



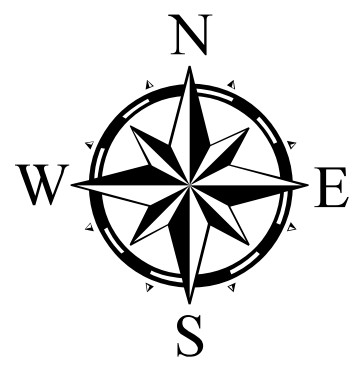
- ▬ Stuart Creek 2 Fire
- ▬▬▬ Uncontrolled Fire Edge
- ▬ Completed Line
- - - - - Hand Line
- ▬▬▬▬▬ Completed Dozer Line
- ⊗ Fire Origin
- ⊙ Spike Camp
- ⊕ Helibase
- ⊙ Staging Area
- ⊕ Water Source
- ⊕ Repeater
- Drop Point
- Helispot
- ⌚ Lookout
- ⚡ Aerial Hazard
- ⊕ RAWS Weather Stn
- || Branch Break
- ) Division Break
- ◇ Mileposts
- - - - - Unknown Road/Trail
- ▬ Primary Road
- ▬ Secondary Road
- ▬ Tertiary Road
- ▬ Unimproved Road
- ▬ Trans-Alaska Pipeline
- Structures
- ▭ Native Allotments
- ▲ Military Observation Point
- ◆ Military Assets of Concern
- Misc. Structures
- Military Reference Point

**U.S. Air Force**

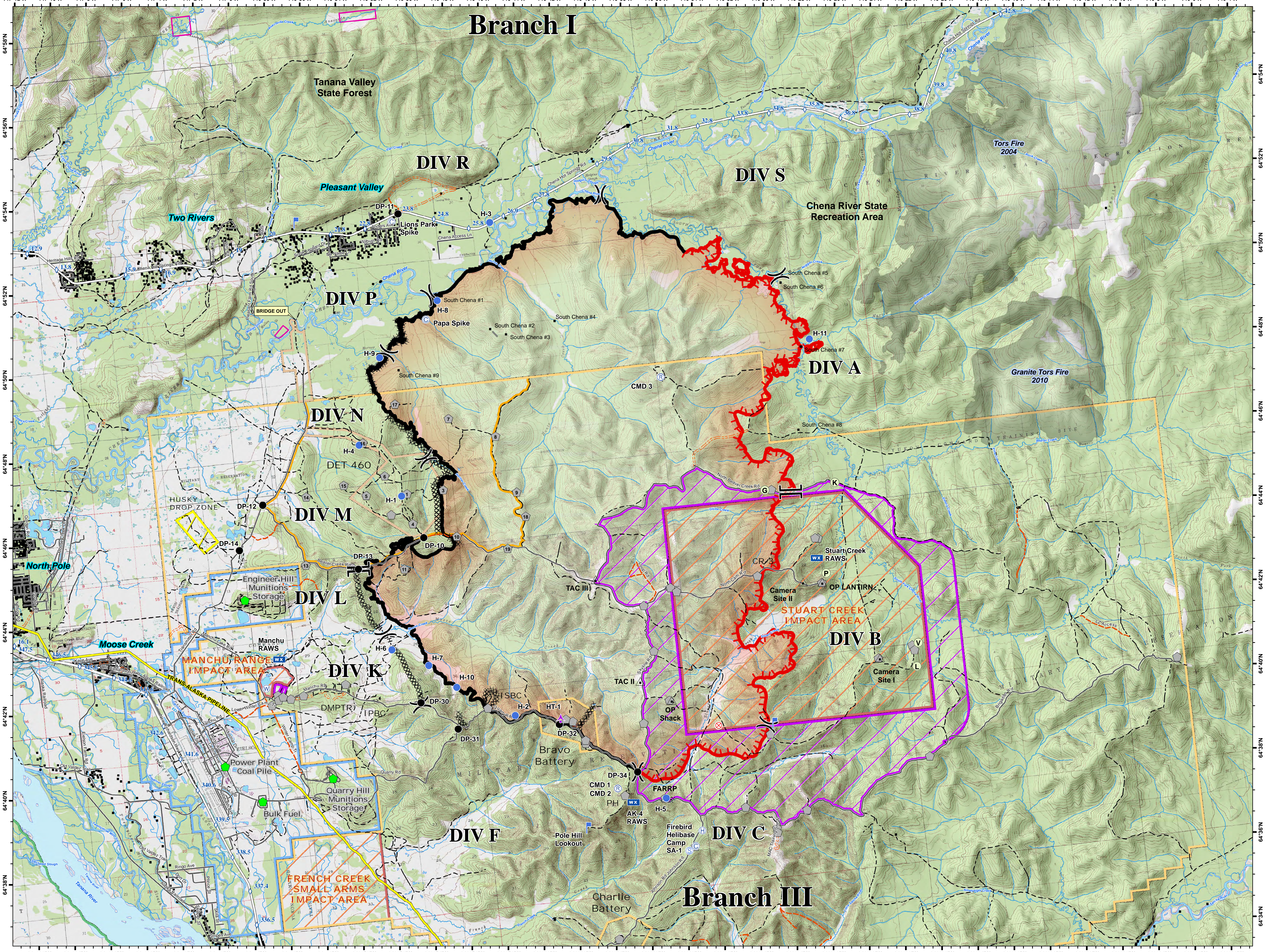
- ▭ Eielson Air Force Base
- ▭ Chena River Research Site

**U.S. Army Fort Wainwright**

- ▭ Yukon Training Area
- ▨ Impact Area - Stay on Roads
- ▨ Restricted Area
- ▭ DET 460
- ▨ Husky Drop Zone
- ▭ Tanana Flats



0 0.5 1 2 3 Miles



**Branch I**

**DIV S**

**DIV A**

**DIV B**

**DIV C**

**DIV F**

**DIV K**

**DIV M**

**DIV N**

**DIV P**

**DIV R**

**Branch III**