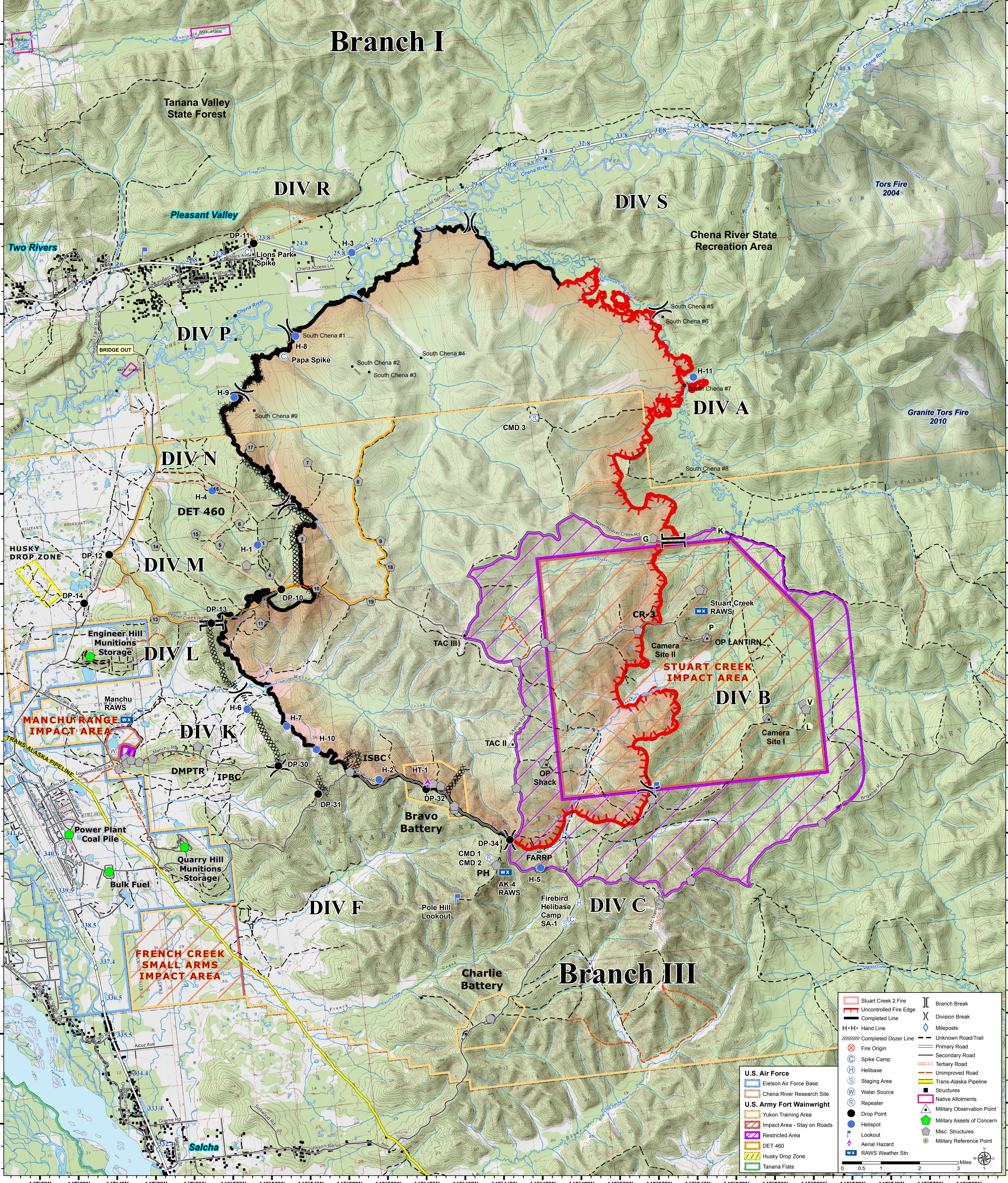


**Stuart Creek 2 Incident**  
**AK-MID-000280**  
**Operations Map**

7/17/2013  
 0800 hrs  
 85,475 acres

Approx. Perimeter as of 7/16/2013 @ 0800 hrs  
 NAD 1983 Alaska Albers



# Branch I

# Branch III

	Stuart Creek 2 Fire		Branch Break
	Uncontrolled Fire Edge		Division Break
	Completed Line		Mileposts
	Completed Dozer Line		Unknown Road/Trail
	Fire Origin		Primary Road
	Spike Camp		Secondary Road
	Helibase		Tertiary Road
	Helispot		Unimproved Road
	Staging Area		Trans-Alaska Pipeline
	Water Source		Structures
	Repeater		Native Allotments
	Drop Point		Military Observation Point
	Impact Area - Stay on Roads		Military Assets of Concern
	Restricted Area		Misc. Structures
	DET 460		Military Reference Point
	Husky Drop Zone		Misc. Structures
	Tanana Flats		Military Reference Point
	RAWs Weather Stn		

0 0.5 1 2 3 Miles