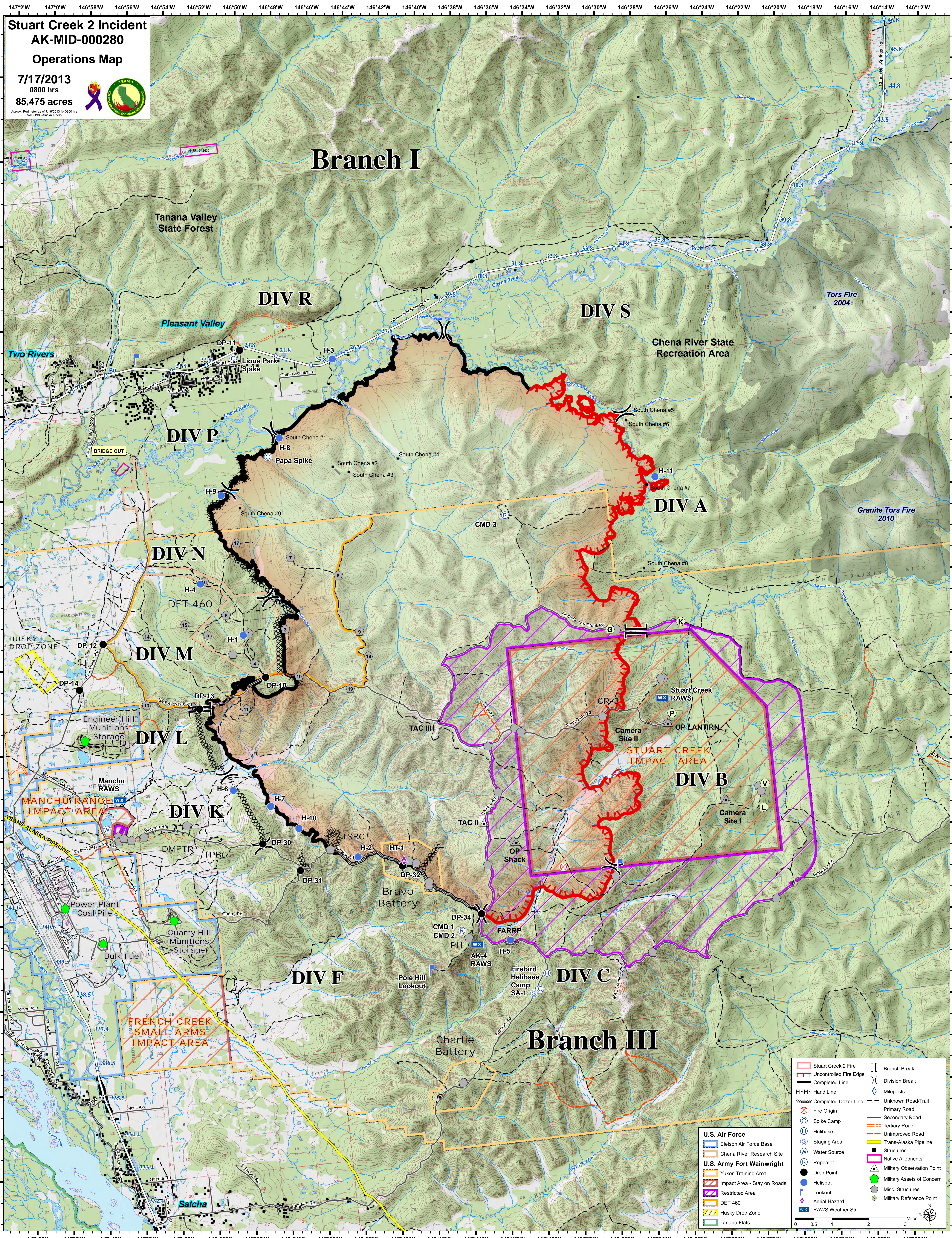


**Stuart Creek 2 Incident**  
**AK-MID-000280**  
**Operations Map**

7/17/2013  
 0800 hrs  
 85,475 acres

Approx. Perimeter as of 7/16/2013 @ 0800 hrs  
 NAD 1983 Alaska Albers



# Branch I

# Branch III

Stuart Creek 2 Fire	Branch Break
Uncontrolled Fire Edge	Division Break
Completed Line	Mileposts
Completed Dozer Line	Unknown Road/Trail
Fire Origin	Primary Road
Spike Camp	Secondary Road
Helibase	Tertiary Road
Staging Area	Unimproved Road
Water Source	Trans-Alaska Pipeline
Repeater	Structures
Drop Point	Native Allotments
Impact Area - Stay on Roads	Military Observation Point
Restricted Area	Military Assets of Concern
Helibase	Misc. Structures
Lookout	Military Reference Point
Aerial Hazard	
RAWs Weather Stn	

**U.S. Air Force**  
 Eielson Air Force Base  
 Chena River Research Site

**U.S. Army Fort Wainwright**  
 Yukon Training Area  
 Impact Area - Stay on Roads  
 Restricted Area  
 Helibase  
 Drop Point  
 Husky Drop Zone  
 Tanana Flats

0 0.5 1 2 3 Miles