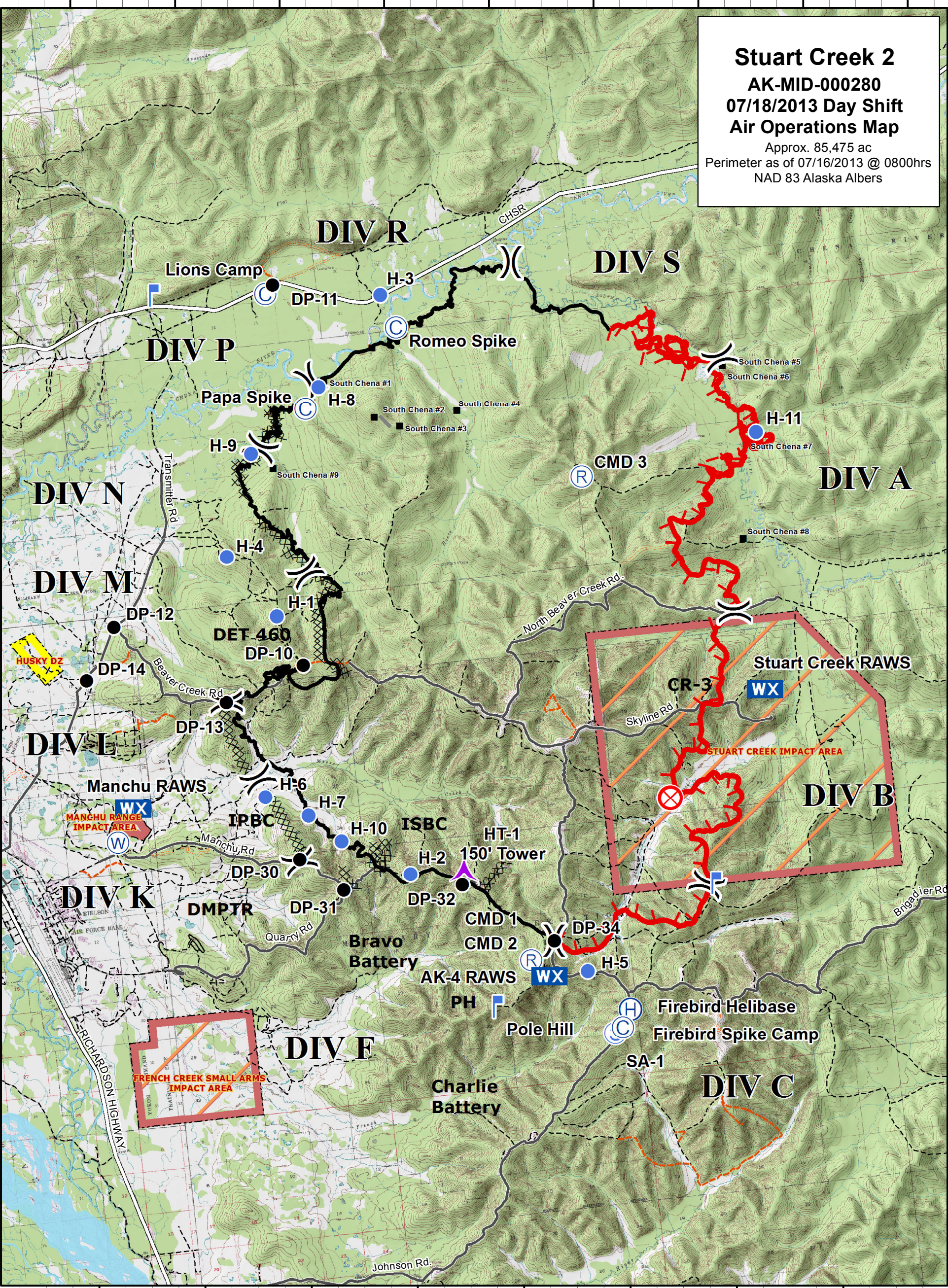


**Stuart Creek 2**  
**AK-MID-000280**  
**07/18/2013 Day Shift**  
**Air Operations Map**  
 Approx. 85,475 ac  
 Perimeter as of 07/16/2013 @ 0800hrs  
 NAD 83 Alaska Albers

64°55'0"N  
64°50'0"N  
64°45'0"N  
64°40'0"N  
64°35'0"N

64°55'0"N  
64°50'0"N  
64°45'0"N  
64°40'0"N  
64°35'0"N



|  |               |  |                     |  |                        |  |                             |
|--|---------------|--|---------------------|--|------------------------|--|-----------------------------|
|  | Aerial Hazard |  | Lookout             |  | Division               |  | Impact Area - Stay on Roads |
|  | Camp          |  | Mobile Weather Unit |  | Uncontrolled Fire Edge |  | Husky Drop Zone             |
|  | Drop Point    |  | Repeater            |  | Completed Dozer Line   |  |                             |
|  | Fire Origin   |  | Staging Area        |  | Completed Line         |  |                             |
|  | Helibase      |  | Water Source        |  | Hand Line              |  |                             |
|  | Helispot      |  |                     |  |                        |  |                             |



| Point               | Latitude (DD MM.MMM) | Longitude (DD MM.MMM) | Notes   |
|---------------------|----------------------|-----------------------|---|
| Fire Origin         | 64 40.000 N          | 146 37.000 W          |   |
| Aerial Hazard Ht-1  | 64 40.534 N          | 146 45.743 W          | AERIAL HAZARD 150 ft tower Ht-1                       |
| Lookout             | 64 39.907 N          | 146 33.946 W          |   |
| Lookout             | 64 53.038 N          | 146 57.583 W          |   |
| Pole Hill           | 64 37.905 N          | 146 44.918 W          |   |
| Firebird Helibase   | 64 37.546 N          | 146 38.547 W          |   |
| H-1                 | 64 46.275 N          | 146 53.233 W          | Good for type 2 & 3 helicopters                       |
| H-2                 | 64 40.768 N          | 146 48.229 W          | Good for Type 1, 2, and 3 helicopters                 |
| H-3                 | 64 52.552 N          | 146 46.660 W          | Good for medivac & troops. Type 1, 2, & 3 helicopters |
| H-4                 | 64 47.591 N          | 146 55.300 W          | Good for medivac & troops. Type 2, & 3 helicopters    |
| H-5                 | 64 38.415 N          | 146 40.352 W          |   |
| H-6                 | 64 42.647 N          | 146 54.695 W          |   |
| H-7                 | 64 42.180 N          | 146 52.736 W          |   |
| H-8                 | 64 50.831 N          | 146 50.074 W          |   |
| H-9                 | 64 49.620 N          | 146 53.630 W          |   |
| H-10                | 64 41.589 N          | 146 51.316 W          | Log Deck; good for Type 2 & 3 helicopters             |
| H-11                | 64 48.940' N         | 146 29.534' W         | Log Deck; good for Type 2 & 3 helicopters             |
| Water Source        | 64 42.040 N          | 147 01.905 W          |   |
| DP-10               | 64 45.231 N          | 146 52.250 W          |   |
| DP-11               | 64 52.993 N          | 146 51.746 W          |   |
| DP-12               | 64 46.412 N          | 147 01.031 W          |   |
| DP-13               | 64 44.648 N          | 146 56.080 W          |   |
| DP-14               | 64 45.388 N          | 147 02.600 W          |   |
| DP-30               | 64 41.314 N          | 146 53.391 W          |   |
| DP-31               | 64 40.593 N          | 146 51.481 W          |   |
| DP-32               | 64 40.440 N          | 146 45.842 W          |   |
| DP-34               | 64 39.111 N          | 146 41.783 W          |   |
| Firebird Spike Camp | 64 37.195 N          | 146 39.011 W          |   |
| Lions Camp          | 64 52.809 N          | 146 52.895 W          |   |
| SA-1                | 64 37.101 N          | 146 39.391 W          |   |
| South Chena #2      | 64 49.987 N          | 146 47.099 W          | Helitack must protect                                 |
| South Chena #3      | 64 49.853 N          | 146 46.433 W          | Helitack must protect                                 |