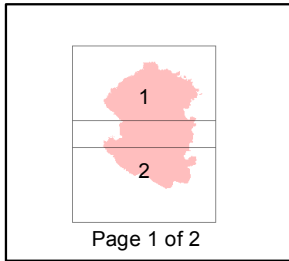
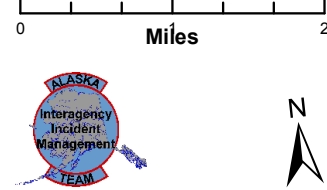
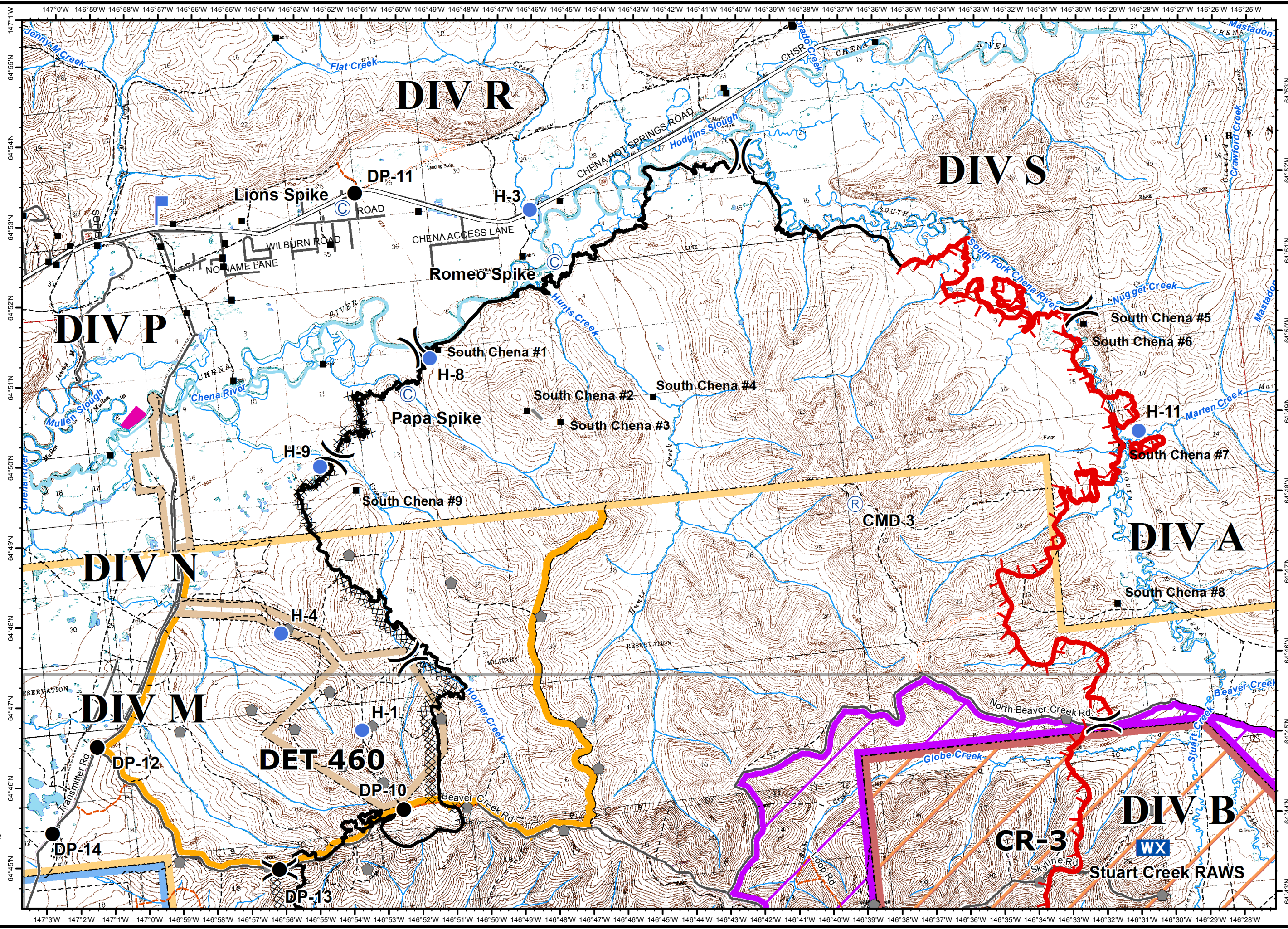


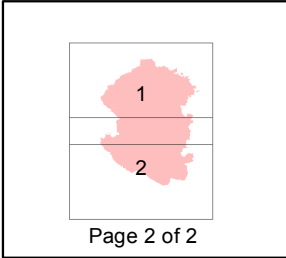
Stuart Creek 2
AK-MID-000280
IAP Map
NAD 1983
07/18/2013
Day Shift
Approx: 85,475 ac
Perimeter as of: 07/16/13
0800hrs



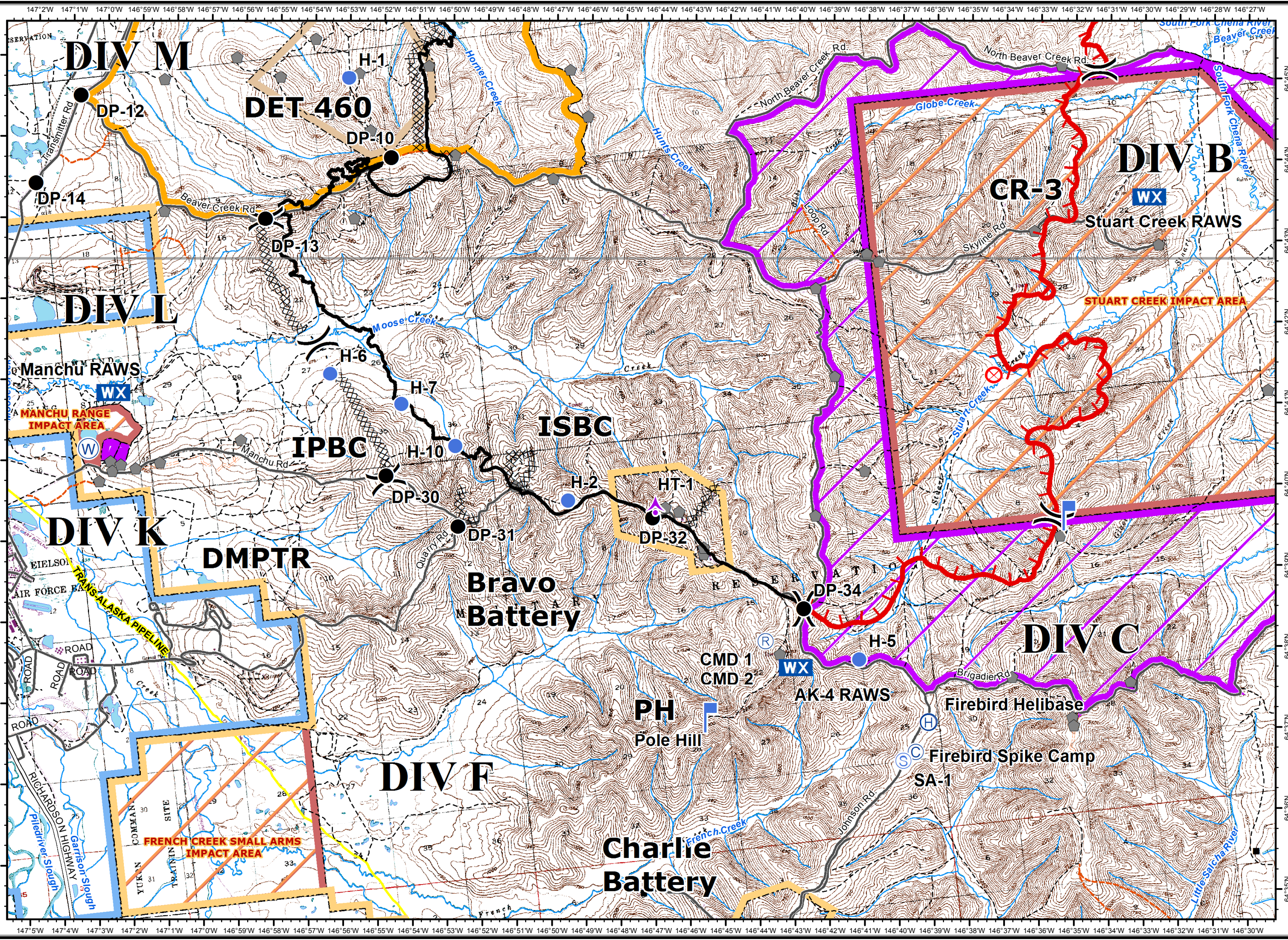
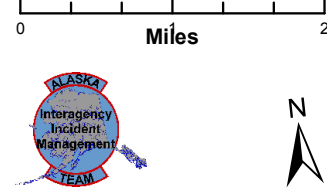
- () Division
- ⚡ Aerial Hazard
- Ⓡ Repeater
- Ⓢ Camp
- Drop Point
- ⊗ Fire Origin
- Ⓜ Helibase
- Ⓜ Helispot
- Ⓜ Lookout
- WX Mobile Weather Unit
- Ⓢ Staging Area
- Ⓜ Water Source
- Ⓜ Uncontrolled Fire Edge
- Ⓜ Completed Dozer Line
- Ⓜ Completed Line
- H - Hand Line
- Ⓜ Native Allotments
- Ⓜ Known Sites
- Ⓜ Miscellaneous Structures
- Ⓜ Military Obsv Point
- U.S. Air Force**
- Ⓜ Eielson Air Force Base
- Ⓜ Chena River Research Site
- U.S. Army Fort Wainwright**
- Ⓜ Yukon Training Area
- Ⓜ Impact Area - Stay on Roads
- Ⓜ Restricted Area
- Ⓜ DET 460
- Ⓜ Husky Drop Zone



Stuart Creek 2
AK-MID-000280
IAP Map
NAD 1983
07/18/2013
Day Shift
Approx: 85,475 ac
Perimeter as of: 07/16/13
0800hrs



- () Division
- ▲ Aerial Hazard
- Ⓡ Repeater
- Ⓢ Camp
- Drop Point
- ⊗ Fire Origin
- Ⓜ Helibase
- Helispot
- Ⓛ Lookout
- WX Mobile Weather Unit
- Ⓢ Staging Area
- Ⓜ Water Source
- Uncontrolled Fire Edge
- XXXX Completed Dozer Line
- Completed Line
- H - Hand Line
- Native Allotments
- Known Sites
- Miscellaneous Structures
- ▲ Military Obsv Point
- U.S. Air Force**
- Eielson Air Force Base
- Chena River Research Site
- U.S. Army Fort Wainwright**
- Yukon Training Area
- Impact Area - Stay on Roads
- Restricted Area
- DET 460
- Husky Drop Zone



147°5'W 147°4'W 147°3'W 147°2'W 147°1'W 147°0'W 146°59'W 146°58'W 146°57'W 146°56'W 146°55'W 146°54'W 146°53'W 146°52'W 146°51'W 146°50'W 146°49'W 146°48'W 146°47'W 146°46'W 146°45'W 146°44'W 146°43'W 146°42'W 146°41'W 146°40'W 146°39'W 146°38'W 146°37'W 146°36'W 146°35'W 146°34'W 146°33'W 146°32'W 146°31'W 146°30'W 146°29'W 146°28'W 146°27'W